

Egan Convention Center New Assisted Listening System 555 West 5th Ave. Anchorage, Alaska

RSA Engineering, Inc.
MECHANICAL AND ELECTRICAL CONSULTING ENGINEERS
670 W. FIREWEED LN. SUITE 200 ANCHORAGE, AK 99503-2516 (907)276-0521

SUMMARY OF WORK:

PROJECT INCLUDES NEW ASSISTED LISTENING SYSTEM FOR GROUND AND LOWER LEVEL MEETING ROOMS. ALL COMPONENTS WILL BE ADDED TO THE EXISTING SOUND SYSTEMS.

INDEX TO DRAWINGS:

- T1.0 Cover Sheet
- E0.1 Electrical Specifications & Legend
- E1.1 Lower Level - Assisted Listening System Floor Plan
- E1.2 Ground Level - Assisted Listening System Floor Plan
- E1.3 Upper Level - Assisted Listening System Floor Plan

Performance Specifications - 9/16/22

ELECTRICAL SPECIFICATIONS

SCOPE OF WORK – FURNISH AND INSTALL ALL MATERIAL AND EQUIPMENT FOR ELECTRICAL SYSTEM AS INDICATED ON THE DRAWINGS AND IN THESE SPECIFICATIONS.

STANDARDS, CODES AND REGULATIONS – COMPLY WITH THE LATEST ADOPTED EDITION OF THE NATIONAL ELECTRICAL CODE, INTERNATIONAL BUILDING CODE, AND INTERNATIONAL FIRE CODE INCLUDING ALL STATE AND LOCAL AMENDMENTS TO THESE CODES. COMPLY WITH THE LATEST PUBLISHED VERSION OF THE NECA STANDARD OF INSTALLATION. COMPLY WITH THE LATEST ADOPTED VERSION OF THE MUNICIPALITY OF ANCHORAGE STANDARD SPECIFICATIONS.

DRAWINGS – THE DRAWINGS ARE DIAGRAMMATIC, NOT NECESSARILY SHOWING ALL OFFSETS OR EXACT LOCATIONS OF FIXTURES, EQUIPMENT, ETC. UNLESS SPECIFICALLY DIMENSIONED. BRING QUESTIONABLE OR OBSCURE ITEMS, APPARENT CONFLICTS BETWEEN PLANS AND SPECIFICATIONS, GOVERNING CODES OR UTILITIES REGULATIONS TO THE ATTENTION OF THE OWNER. CODES, ORDINANCES, REGULATIONS, MANUFACTURER'S INSTRUCTIONS OR STANDARDS TAKE PRECEDENCE WHEN THEY ARE MORE STRINGENT OR CONFLICT WITH THE DRAWINGS AND SPECIFICATIONS.

RECORD DRAWINGS – MARK UP A CLEAN SET OF DRAWINGS AS THE WORK PROGRESSES TO SHOW THE DIMENSIONED LOCATION AND ROUTING OF ALL ELECTRICAL WORK WHICH WILL BECOME PERMANENTLY CONCEALED. SHOW ROUTING OF WORK IN PERMANENTLY CONCEALED BLIND SPACES WITHIN THE BUILDING. SHOW COMPLETE ROUTING AND SIZING OF ANY SIGNIFICANT REVISIONS TO THE SYSTEMS SHOWN.

WORKMANSHIP – INSTALLATION OF ALL WORK SHALL BE MADE SO THAT ITS SEVERAL COMPONENT PARTS SHALL FUNCTION AS A WORKABLE SYSTEM COMPLETE WITH ALL ACCESSORIES NECESSARY FOR ITS OPERATION. ALL MATERIAL AND EQUIPMENT SHALL BE INSTALLED IN ACCORDANCE WITH THE MANUFACTURER'S RECOMMENDATIONS, INSTRUCTIONS AND/OR INSTALLATION DRAWINGS AND IN ACCORDANCE WITH NECA STANDARDS. MATERIALS AND EQUIPMENT SHALL BE NEW AND SHALL CONFORM WITH APPLICABLE INDUSTRY STANDARDS, NEMA STANDARDS AND UNDERWRITERS LABORATORIES STANDARDS WHERE APPLICABLE.

SUBMITTALS – PROVIDE MATERIAL AND EQUIPMENT SUBMITTALS CONTAINING A COMPLETE LISTING OF MATERIAL AND EQUIPMENT SHOWN ON THE DRAWINGS. INCLUDE CATALOG NUMBERS, WIRING DIAGRAMS, ROUGH-IN DIMENSIONS AND PERFORMANCE DATA FOR ALL MATERIAL AND EQUIPMENT. SUBMITTALS SHALL BE BOUND IN ELECTRONIC PDF FORMAT SEPARATE FROM WORK FURNISHED UNDER OTHER DIVISIONS. INDEX AND CLEARLY IDENTIFY ALL MATERIAL AND EQUIPMENT BY ITEM, NAME OR DESIGNATION USED ON THE DRAWINGS. SUBMITTAL REVIEW IS FOR GENERAL DESIGN AND ARRANGEMENT ONLY AND DOES NOT RELIEVE THE CONTRACTOR FROM ANY REQUIREMENTS OF THE CONTRACT DOCUMENTS. THE SUBMITTALS ARE NOT CHECKED FOR QUANTITY, DIMENSION, OR FOR PROPER OPERATION. WHERE DEVIATIONS OF A SUBSTITUTE PRODUCT OR SYSTEM PERFORMANCE HAVE NOT BEEN SPECIFICALLY NOTED IN THE SUBMITTAL BY THE CONTRACTOR, PROVISIONS OF A COMPLETE AND SATISFACTORY WORKING INSTALLATION IS THE SOLE RESPONSIBILITY OF THE CONTRACTOR.

OPERATION AND MAINTENANCE MANUALS – PROVIDE OPERATION AND MAINTENANCE MANUALS FOR TRAINING OF THE OWNER'S PERSONNEL. DESCRIBE THE PROCEDURES NECESSARY TO OPERATE THE SYSTEM INCLUDING START-UP, OPERATION, EMERGENCY OPERATION AND SHUTDOWN. PROVIDE MANUFACTURER'S DESCRIPTIVE LITERATURE INCLUDING APPROVED SHOP DRAWINGS COVERING DEVICES USED IN ANY CONTRACTOR-PROVIDED EQUIPMENT OR SYSTEMS WITH ILLUSTRATION, EXPLODED VIEWS, ETC.

WARRANTY – THE CONTRACTOR SHALL GUARANTEE ALL WORK EXECUTED UNDER THIS CONTRACT TO BE FREE FROM DEFECTS IN MATERIALS AND WORKMANSHIP FOR A PERIOD OF ONE YEAR FROM BENEFICIAL OCCUPANCY. ANY FAULTY MATERIALS OR WORKMANSHIP SHALL BE REPAIRED OR REPLACED TO THE SATISFACTION OF THE OWNER DURING THE GUARANTEE PERIOD.

PERMITS – SECURE AND PAY FOR ALL FEES, PERMITS, ETC. REQUIRED BY LOCAL AND STATE AGENCIES.

REFERENCE SYMBOLS – THE ELECTRICAL "LEGEND" ON THE DRAWINGS IS A STANDARDIZED VERSION, AND ALL SYMBOLS SHOWN MAY NOT BE USED. USE THE "LEGEND" AS A REFERENCE FOR THE SYMBOLS USED ON THE DRAWINGS.

27 51 00 – AUDIO-VIDEO COMMUNICATION SYSTEMS

A. SUMMARY: THIS SECTION INCLUDES REQUIREMENTS FOR A MODIFICATION TO THE EXISTING SOUND SYSTEM.

B. SUBMITTALS: SUBMIT PRODUCT DATA FOR APPROVAL.

C. MATERIALS:

1. RACK EQUIPMENT – EXISTING
 - a. AUDIO MIXER: EXISTING LECTROSONICS ASPEN 1624.
2. ASSISTED LISTENING SYSTEM: TRANSMITTER: WILLIAMS SOUND MODEL #FM T55 OR APPROVED EQUAL TRANSMITTER WITH FM AND WI-FI BROADCASTING CAPABILITIES.
3. ANTENNA: WILLIAMS SOUND MODEL #ANT 024 OR EQUAL DIPOLE ANTENNA FOR REMOTE BROADCAST.
4. FM RECEIVER: WILLIAMS SOUND MODEL #FM R38 OR EQUAL. PROVIDE QUANTITY (60) RECEIVERS FOR THE GROUND LEVEL AND (43) RECEIVERS FOR THE LOWER LEVEL SOUND SYSTEMS.
5. WIRE AND CABLE:
 - a. ASSISTED LISTENING SYSTEM CABLE: PER MANUFACTURER, RG-59 COAXIAL CABLE TO ANTENNAS, UPSIZE IF REQUIRED BY DISTANCE.

D. INSTALLATION:

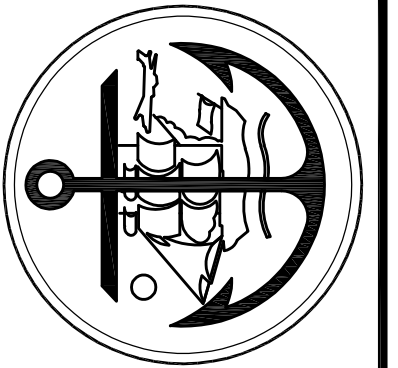
1. INSTALL EQUIPMENT IN ACCORDANCE WITH MANUFACTURER'S WRITTEN INSTRUCTIONS.
2. WIRING METHODS: ANTENNA CABLE SHALL BE INSTALLED IN SEPARATE PATHWAY FROM OTHER CABLING SYSTEMS IN THE BUILDING.
3. CONFIGURE SYSTEM TO BROADCAST ALL ROOMS SHOWN ON THE PLANS CONCURRENTLY WITHOUT INTERFERENCE FROM EACH OTHER. ALL NAMES FOR BROADCAST CHANNELS SHALL BE APPROVED BY THE FACILITY. PROVIDE ASSISTANCE TO FACILITY FOR APP SETUP FOR ALL ROOMS.

E. TRAINING: PROVIDE 4 HOURS OF ON-SITE OWNER TRAINING IN SYSTEM SETUP, TROUBLESHOOTING, AND UPDATES.

NOTE TO BIDDER: THIS IS A PERFORMANCE SPECIFICATION TO ASSIST IN BIDDING THIS PROJECT. NOTE THAT THE MINIMUM NUMBER OF ZONES IS INDICATED AND THE CONTRACTOR CAN PROVIDE A TRANSMITTER/ANTENNA CONFIGURATION TO MEET THAT, EVEN IF DIFFERENT THAN SHOWN.

LEGEND

	ASSISTED LISTENING ANTENNA
	JUNCTION BOX
	NOTE TAG (No. INDICATES NOTE)
	CONDUIT
	POWER OVER ETHERNET
	TYPICAL
	UNLESS OTHERWISE NOTED



Municipality of Anchorage

Egan Center

NEW ASSISTED LISTENING SYSTEM

555 West Fifth Avenue
Anchorage, Alaska 99501

REVISIONS:

DRAWN BY: CK
CHECKED BY: JAM
DATE: 09/16/2022
JOB NUMBER: M2107
DWG FILE: M2107-ESERIES

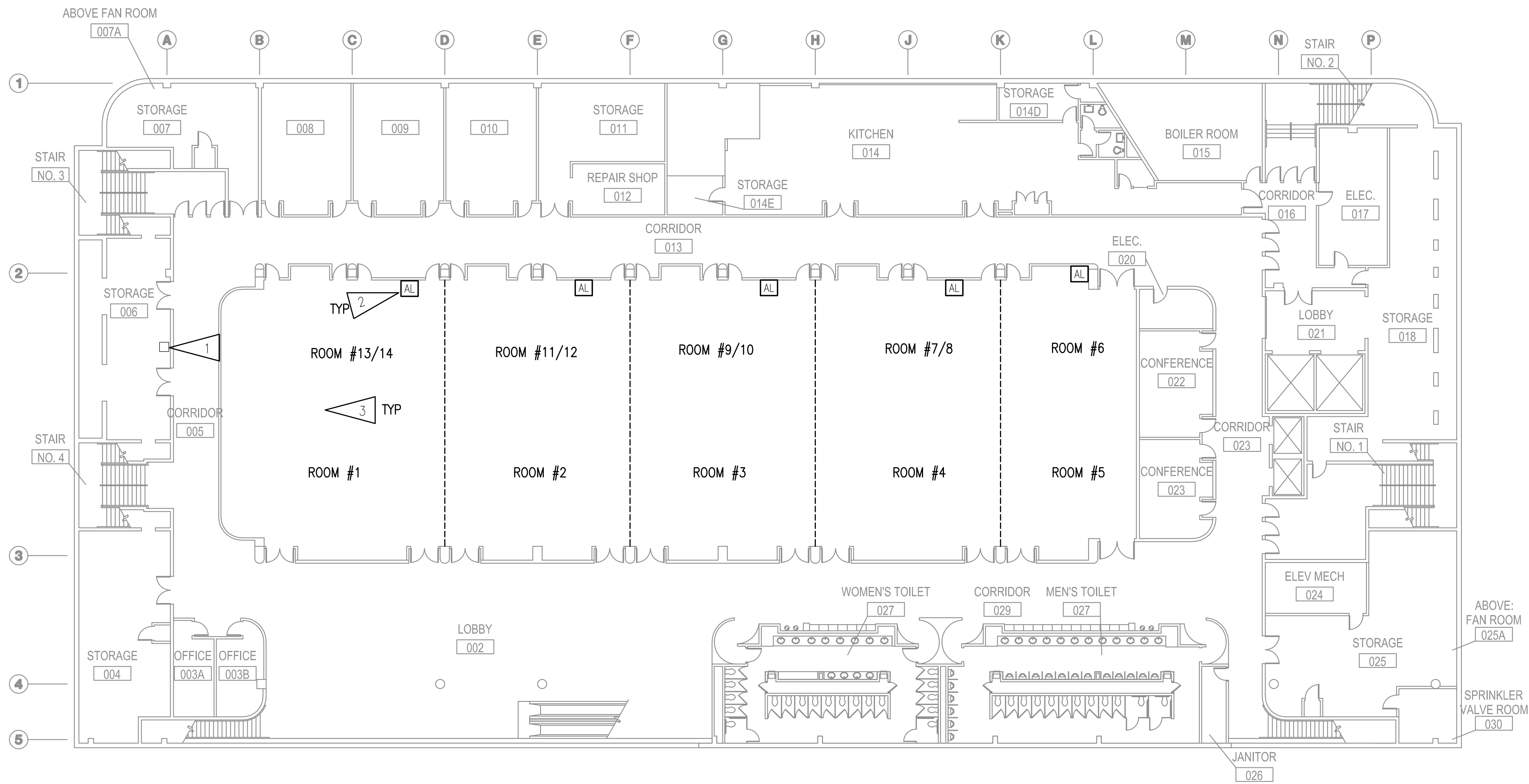
DRAWING TITLE:
ELECTRICAL
SPECIFICATIONS
& LEGEND

SHEET:

E0.1

PERFORMANCE SPECIFICATIONS

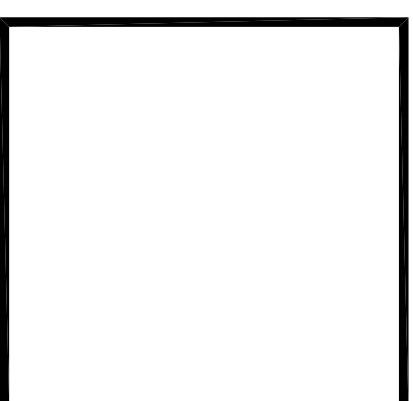
R S A
Engineering, Inc.
MECHANICAL AND ELECTRICAL CONSULTING ENGINEERS
670 West Fireweed Lane, Suite 200
Anchorage, AK 99503
Phone (907) 276-0521
Corporate No.: AEC0542



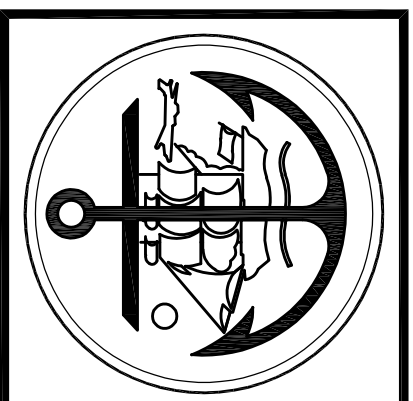
1 LOWER LEVEL - ASSISTED LISTENING SYSTEM FLOOR PLAN
 1/16" = 1'-0"

SHEET NOTES:

- EXISTING SOUND SYSTEM RACK WITH LECTROSONICS ASPEN 1624 MIXER. CONNECT FM TRANSMITTERS TO OUTPUTS FOR ROOM CONFIGURATION SHOWN. ROUTE COAXIAL CABLING TO ANTENNAS. INSTALL TRANSMITTERS IN RACK. PROVIDE SHELF IN EXISTING RACK. PROVIDE SURGE PROTECTOR STRIP FOR TRANSMITTER.
- REMOTE ASSISTED LISTENING ANTENNA. ROUTE CABLING TO SOUND SYSTEM RACK. PROVIDE NEW J-HOOK PATHWAY TO SEPARATE FROM OTHER SYSTEMS.
- NOTE THAT SPACES SHOWN ARE MADE UP OF MULTIPLE SMALLER ROOMS. EXISTING SYSTEM HAS A PRESET FOR THIS CONFIGURATION WHICH SHALL BE USED TO MAP OUTPUT FOR THE (5) SPACES SHOWN.



R S A
Engineering, Inc.
 MECHANICAL AND ELECTRICAL CONSULTING ENGINEERS
 670 West Fireweed Lane, Suite 200
 Anchorage, AK 99503
 Phone (907) 276-0521
 Corporate No.: AEC0542



Municipality of Anchorage
Egan Center
 NEW ASSISTED LISTENING SYSTEM
 555 West Fifth Avenue
 Anchorage, Alaska 99501

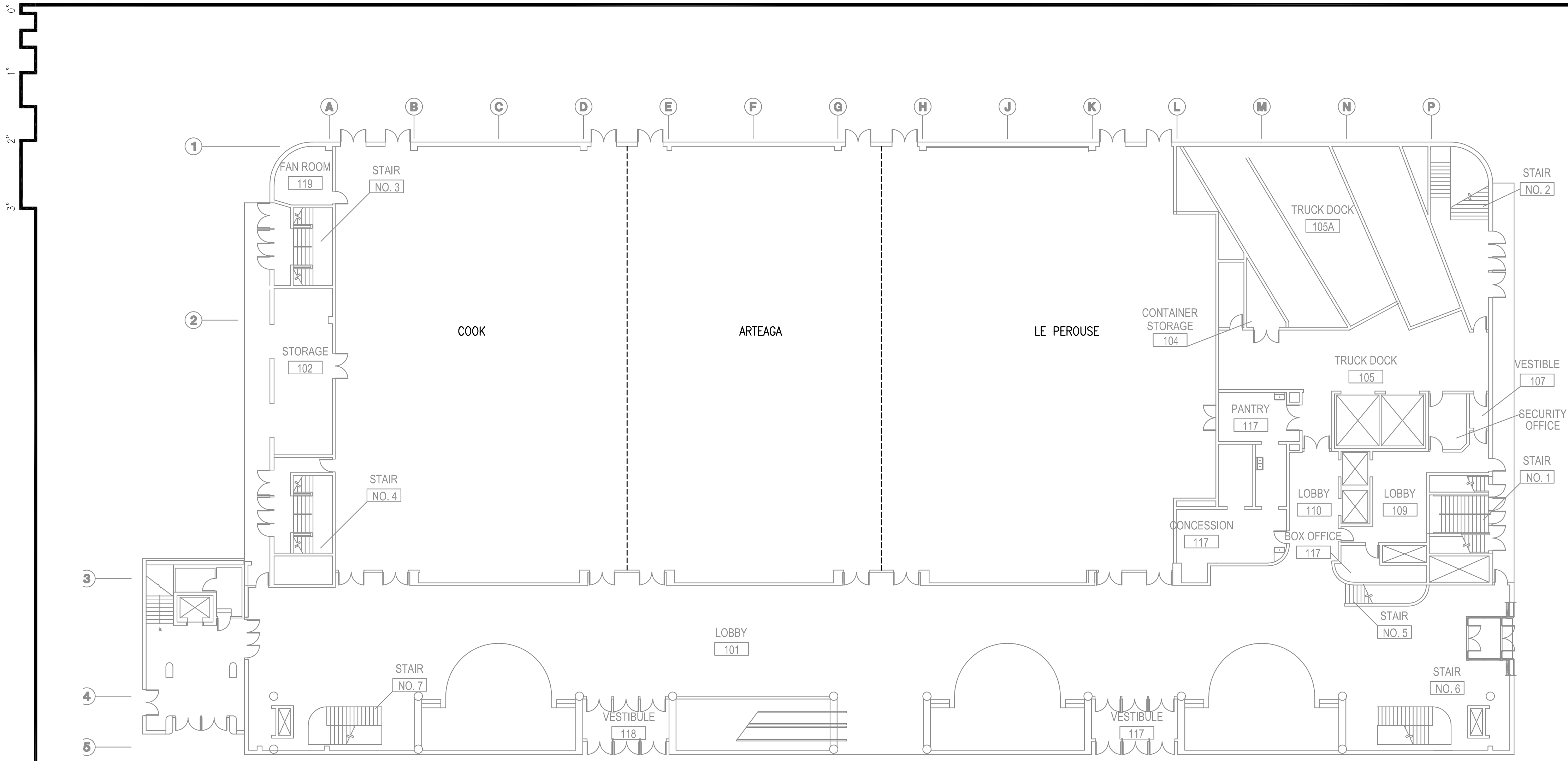
REVISIONS:

DRAWN BY: CK
 CHECKED BY: JAM
 DATE: 09/16/2022
 JOB NUMBER: M2107
 DWG FILE: M2107-ESERIES

DRAWING TITLE:
 LOWER LEVEL -
 ASSISTED LISTENING
 SYSTEM FLOOR PLAN

SHEET:
E1.1

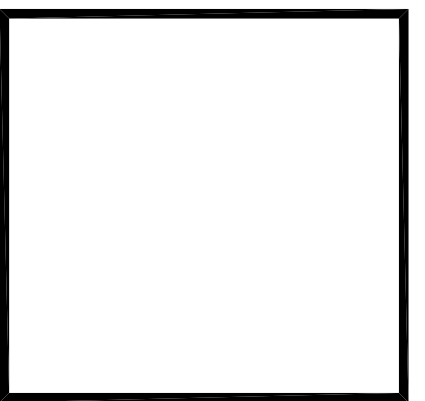
PERFORMANCE SPECIFICATIONS



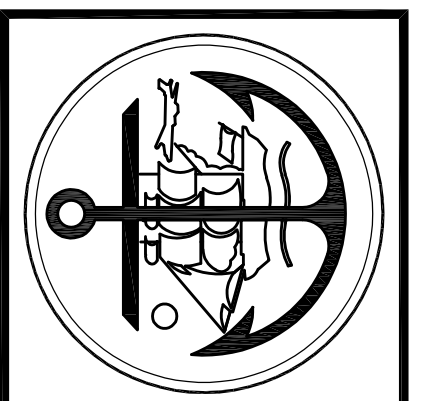
1 GROUND LEVEL - ASSISTED LISTENING SYSTEM FLOOR PLAN
 1/16" = 1'-0"

GENERAL NOTES:

- A. SEE E1.3 FOR WORK IN THIS AREA.



R S A
Engineering, Inc.
 MECHANICAL AND ELECTRICAL CONSULTING ENGINEERS
 670 West Fireside Lane, Suite 200
 Anchorage, AK 99503
 Phone (907) 276-0521
 Corporate No.: AEC0542



Municipality of Anchorage
Egan Center
 NEW ASSISTED LISTENING SYSTEM
 555 West Fifth Avenue
 Anchorage, Alaska 99501

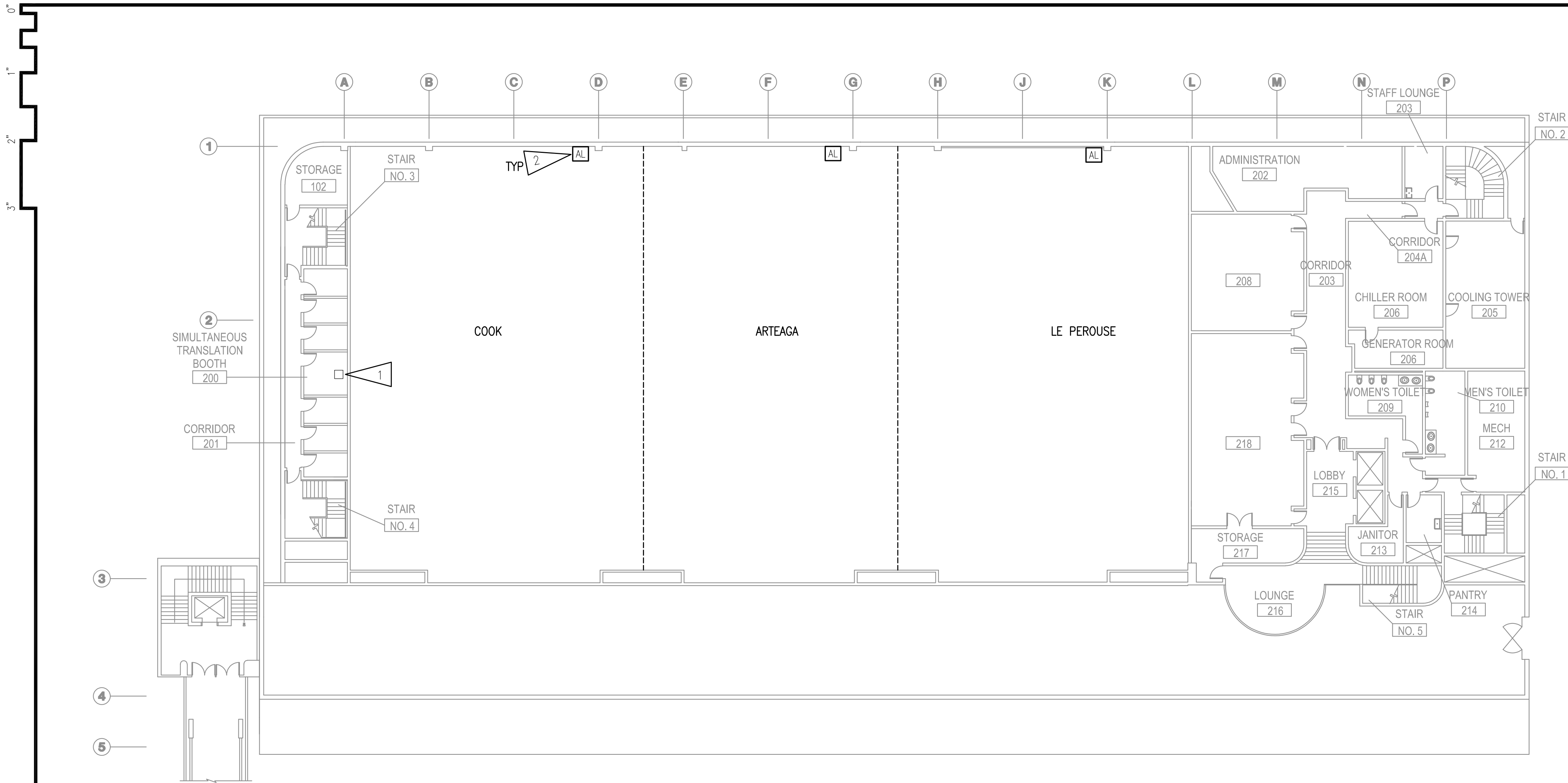
REVISIONS:

DRAWN BY: CK
 CHECKED BY: JAM
 DATE: 09/16/2022
 JOB NUMBER: M2107
 DWG FILE: M2107-ESERIES

DRAWING TITLE:
 GROUND LEVEL -
 ASSISTED LISTENING
 SYSTEM FLOOR PLAN

SHEET:
E1.2

PERFORMANCE SPECIFICATIONS



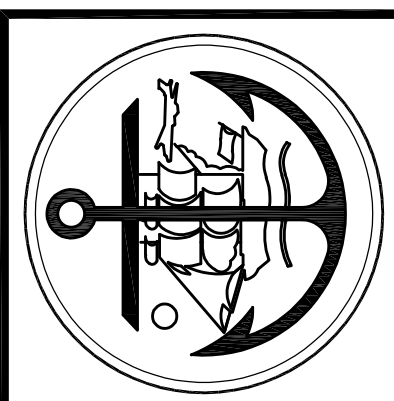
1 UPPER LEVEL - ASSISTED LISTENING SYSTEM FLOOR PLAN
 1/16" = 1'-0"

SHEET NOTES:

- EXISTING SOUND SYSTEM RACK WITH LECTROSONICS ASPEN 1624 MIXER. CONNECT FM TRANSMITTERS TO OUTPUTS FOR ROOM CONFIGURATION SHOWN. ROUTE COAXIAL CABLING TO ANTENNAS. INSTALL TRANSMITTERS IN RACK. PROVIDE SHELF IN EXISTING RACK. PROVIDE SURGE PROTECTOR STRIP FOR TRANSMITTER.



R S A
Engineering, Inc.
 MECHANICAL AND ELECTRICAL CONSULTING ENGINEERS
 670 West Fireweed Lane, Suite 200
 Anchorage, AK 99503
 Phone (907) 276-0521
 Corporate No.: AEC0542



Municipality of Anchorage
Egan Center
 NEW ASSISTED LISTENING SYSTEM
 555 West Fifth Avenue
 Anchorage, Alaska 99501

REVISIONS:

DRAWN BY: CK
 CHECKED BY: JAM
 DATE: 09/16/2022
 JOB NUMBER: M2107
 DWG FILE: M2107-ESERIES

DRAWING TITLE:
 UPPER LEVEL -
 ASSISTED LISTENING
 SYSTEM FLOOR PLAN

SHEET:
E1.3

PERFORMANCE SPECIFICATIONS