

**Areawide Park, Trail and Park Facility
Improvements**

INVITATION TO BID NO. 2022C051



**Municipality of Anchorage
Parks and Recreation Department
623 W. 6th Avenue, Suite 620
Anchorage, Alaska 99507**

**MUNICIPALITY OF ANCHORAGE
PARKS AND RECREATION DEPARTMENT**

AREAWIDE PARK, TRAIL AND PARK FACILITY IMPROVEMENTS

MASTER INDEX

- I. INVITATION TO BID
- II. SPECIAL PROVISIONS
- III. SUBMITTAL LIST
- IV. SPECIAL DETAILS
- V. EQUAL EMPLOYMENT OPPORTUNITY SPECIAL PROVISIONS
- VI. MINIMUM RATES OF PAY
- VII. CONTRACT
- VIII. CONTRACT PERFORMANCE AND PAYMENT BOND
- IX. CERTIFICATE OF INSURANCE
- X. BID BOND
- XI. BIDDER'S CHECKLIST
- XII. BID PROPOSAL

**MUNICIPALITY OF ANCHORAGE
PARKS AND RECREATION DEPARTMENT**

AREAWIDE PARK, TRAIL AND PARK FACILITY IMPROVEMENTS

I

INVITATION TO BID

MUNICIPALITY OF ANCHORAGE

PURCHASING DEPARTMENT

Invitation to Bid

No. 2022C051

Sealed bids will be received in accordance with the time schedule shown below by the Municipality of Anchorage at the Purchasing Department, 632 W. 6th Ave., Suite 520, Anchorage, Alaska 99501 for:

AREAWIDE PARK, TRAIL AND PARK FACILITY IMPROVEMENTS

Consisting of various miscellaneous park, trail and park facility improvements within Municipality of Anchorage parks, including playgrounds, trails, sidewalks and right of way.

ESTIMATED CONSTRUCTION COST: **\$500,000.00 to \$1,000,000.00**

Site Visit: N/A
Pre-Bid Conference: N/A
Questions Due: 12:00 P.M. Local Time, January 4, 2023
Bid Opening: 3:30 P.M. Local Time, January 17, 2023

All Pre-Bid Conferences and/or Bid Openings may be attended in person or via conference call at this number (907) 343-6089. You may call in five (5) minutes before any scheduled conference. EMAILED BIDS WILL NOT BE ACCEPTED.

ALL QUESTIONS SHALL BE SUBMITTED PRIOR TO THE QUESTION DUE DATE THIS WILL BE THE FINAL OPPORTUNITY TO ASK QUESTIONS OR REQUEST CLARIFICATIONS.

Requests for interpretation or clarification of the bidding Documents shall be made in writing to the Purchasing Office (wwpur@muni.org). Please reference the Invitation to Bid Number & Project Title. Do not contact the specified department directly.

To maintain the project schedule, Interpretations, corrections, or changes to the Bidding Documents shall be made by Addendum and shall not be binding unless included in the Addendum. It is your responsibility to periodically check the website for addenda.

Municipality of Anchorage
ITB: 2022C051

At the above indicated time, the bids will be opened publicly and read. Bids must be received by the Purchasing Officer prior to the time fixed for opening of the bids to be considered. Time of receipt will be as determined by the time stamp in the Purchasing Office, Suite 520.

The Municipality of Anchorage reserves the right to reject any and all bids and to waive any informalities in the bids. No bidder may withdraw his bid after the hour set for the opening of bids or before the award of contract unless said award is delayed for a period exceeding forty-five (45) days from the time of the opening.

The Municipality shall not be responsible for bid preparation costs, nor for costs, including attorney fees, associated with any (administrative, judicial or otherwise) challenge to the determination of the lowest responsive and responsible bidder and/or award of contract, and/or rejection of bids. By submitting a bid, each bidder agrees to be bound in this respect and waives all claims to such costs and fees.

Contracts shall be awarded by written notice issued by the Purchasing Officer to the lowest responsive and responsible bidder; however, preference will be given to local bidders in compliance with Anchorage Municipal Code Section 7.20.040.

The Municipality of Anchorage assumes no responsibility for any interpretations or presentations made by any of its officers or agents unless such interpretations or presentations are made by written addendum to this Invitation to Bid.

Bonding Requirements are per MASS/MASS B or as per special provisions.

PUBLISH ONE TIME

Date: December 27, 2022

Senior Buyer Assigned to this Project:

Melanie A. Clark



Chris Hunter
Deputy Purchasing Director

**MUNICIPALITY OF ANCHORAGE
PARKS AND RECREATION DEPARTMENT**

AREAWIDE PARK, TRAIL AND PARK FACILITY IMPROVEMENTS

II

SPECIAL PROVISIONS

**MUNICIPALITY OF ANCHORAGE
PARKS AND RECREATION DEPARTMENT**

AREAWIDE PARK, TRAIL AND FACILITY IMPROVEMENTS

INDEX TO SPECIAL PROVISIONS

		<u>PAGE</u>
	SECTION 95.01 LOCATION AND SCOPE	4
	SECTION 95.02 REFERENCE TO MUNICIPALITY OF ANCHORAGE STANDARD SPECIFICATIONS	5
	SECTION 95.03 TIME OF COMPLETION/PERIOD OF PERFORMANCE.....	5
	SECTION 95.04 MODIFICATIONS AND/OR ADDITIONS TO MUNICIPALITY OF ANCHORAGE STANDARD SPECIFICATIONS.....	5
A.	DIVISION 10 STANDARD GENERAL PROVISIONS	5
	SECTION 10.04 SCOPE OF WORK.....	5
	Article 4.17 Utilities.....	5
	Article 4.22 Additional Construction Services and/or Construction Materials.....	6
	SECTION 10.05 CONTROL OF WORK.....	7
	Article 5.24 Suspension of Work.....	7
	SECTION 10.06 LEGAL RELATIONS AND RESPONSIBILITIES	7
	Article 6.1 Laws to be Observed.....	7
	SECTION 10.07 MEASUREMENT AND PAYMENT	7
	Article 7.0 Payments to Contractors and Subcontractors	7
	Article 7.2 Scope of Payment.....	7
	Article 7.9 Mobilization, Demobilization, and Security.....	7
B.	DIVISION 20 STANDARD CONSTRUCTION SPECIFICATIONS.....	8
	SECTION 20.21 CLASSIFIED FILL AND BACKFILL	8
	Article 21.2 Material.....	8
	Article 21.3 Construction	9
	Article 21.4 Measurement	9

INDEX TO SPECIAL PROVISIONS (CONT.)

		PAGE
	SECTION 20.22 LEVELING COURSE.....	9
	Article 22.2 Material.....	9
	Article 22.3 Construction.....	Error! Bookmark not defined.
	Article 22.4 Measurement.....	Error! Bookmark not defined.
C.	DIVISION 30 STANDARD CONSTRUCTION SPECIFICATIONS FOR PORTLAND CEMENT CONCRETE	10
D.	DIVISION 40 STANDARD CONSTRUCTION SPECIFICATIONS FOR ASPHALT SURFACING	12
E.	DIVISION 55 STANDARD CONSTRUCTION SPECIFICATIONS FOR STORM DRAIN SYSTEMS	14
F.	DIVISION 70 STANDARD CONSTRUCTION SPECIFICATIONS MISCELLANEOUS	14
	SECTION 70.12 TRAFFIC MAINTENANCE	14
	Article 12.6 Public Notice	14
	SECTION 70.22 MISCELLANEOUS LABOR.....	15
	Article 22.1 General	15
	Article 22.2 Basis of Payment.....	15
	SECTION 70.23 SAWCUT ASPHALT OR CONCRETE	16
	Article 23.1 General	16
	Article 23.2 Construction.....	16
	Article 23.3 Basis of Payment.....	16
	SECTION 70.24 ENGINEERED WOOD FIBER SAFETY SURFACING.....	ERROR! BOOKMARK NOT DEFINED.
	Article 24.1 Description	Error! Bookmark not defined.
	Article 24.2 Materials.....	Error! Bookmark not defined.
	Article 24.3 Construction.....	Error! Bookmark not defined.
	Article 24.4 Measurement.....	Error! Bookmark not defined.
	Article 24.5 Basis of Payment.....	Error! Bookmark not defined.
	SECTION 70.25 SITE FURNISHINGS.....	16
	Article 25.1 Description	1
	Article 25.2 Material.....	1
	Article 25.3 Owner Supplied Furnishing	2
	Article 25.4 Manufacturer and Local Representative:	2
	Article 25.5 Construction.....	2
	Article 25.6 Measurement.....	3
	Article 25.7 Basis of Payment.....	3

INDEX TO SPECIAL PROVISIONS (CONT.)

	PAGE
SECTION 70.26 WORK INCIDENTAL TO THE CONTRACT	3
G. DIVISION 75 STANDARD CONSTRUCTION SPECIFICATIONS FOR LANDSCAPING IMPROVEMENTS	4
Article 2.6 Measurement	4
Article 2.7 Basis of Payment	4
H. DIVISION 80 STANDARD CONSTRUCTION SPECIFICATIONS FOR INSTALLATION AND REMOVAL OF TRAFFIC SIGNALS AND ILLUMINATION	4
Article 7.1 General	5

**MUNICIPALITY OF ANCHORAGE
PARKS AND RECREATION DEPARTMENT**

AREAWIDE PARK, TRAIL AND PARK FACILITY IMPROVEMENTS

SPECIAL PROVISIONS

SECTION 95.01 LOCATION AND SCOPE OF SERVICES

All proposed Work will be located within the Municipality of Anchorage (MOA) corporate limits, an area from Potter Marsh to the Anchorage Regional Landfill, and from the Sand Lake area, including Point Campbell, to and including the Hillside area. The successful Contractor under these specifications shall furnish all labor, materials, supervision, tools, transportation, equipment, and other facilities necessary to successfully complete the Work set forth in the specifications.

This Contract will provide the Municipal Parks and Recreation Department the ability to respond to emergency or critical maintenance activities or small construction tasks. The Contractor will be on-call on an "as-required" basis. **The Work required will be agreed upon on a Project-By-Project basis. Payment for all Work will be on a unit price basis as bid in the Bid Schedule except as described in Section 95.01 of these Special Provisions.**

The Contractor will be called upon on an "as-required" basis to construct or reconstruct parks and trails, and non-motorized pedestrian improvements. **When requested by the Engineer, Contractors shall provide a written FIRM FIXED PRICE (FFP) QUOTE defining all construction costs as outlined in the bid schedule and section 4.22 Additional Construction Services and/or Construction Materials if required.** The Bid Schedule is a partial list of construction activities which may be required. The estimated quantities listed in the Bid Schedules are for evaluation of bids only. No adjustment of underruns or overruns will be made.

Due to the uncertainty of the Work, the MOA Parks and Recreation Department cannot guarantee or anticipate any amount of Work. The Contract will award the two lowest bidders \$1,000,000.00 each for a total of \$2,000,000.

SECTION 95.02 REFERENCE TO MUNICIPALITY OF ANCHORAGE STANDARD SPECIFICATIONS

This Contract is subject to and hereby incorporates by reference the Municipality of Anchorage Standard Specifications, dated 2015, hereinafter referred to as M.A.S.S.; the Alaska Sign Design Specifications (ASDS) as adopted and amended by the Municipality; the Municipality of Anchorage Sign Manual; the Alaska Traffic Manual (ATM)-Manual on Uniform Traffic Control Devices (MUTCD) 2009 Edition, with the Alaska supplement, dated 1/13/12; the National Electrical Safety Code (NESC) as amended and adopted by the Municipality; the National Electrical Code as amended and adopted by the Municipality of Anchorage; and the 1994 Edition of the Standard Specifications for Structural Supports for Highway Sign, Luminaires and Traffic Signals. When conflicts exist between M.A.S.S. and MUTCD, the requirements of M.A.S.S. and these Special Provisions shall govern.

SECTION 95.03 TIME OF COMPLETION/PERIOD OF PERFORMANCE

PERIOD OF PERFORMANCE

Period of performance will be on an "as required" basis from January 1, 2023, to December 31, 2023, unless terminated sooner, with an option to renew for one additional one-year periods at the same unit price(s), upon mutual consent of both parties and lawful appropriation of funds.

Time of completion for each project will be determined on a project-by-project basis and as specified during the negotiations for Work. The Contractor shall begin construction within seven working days after a written Notice-to-Proceed.

For this Contract, the paving season is defined as the period between the opening and closing of the asphalt plants in Anchorage. The temporary patch Work will commence when the asphalt plants in Anchorage close for the winter.

SECTION 95.04 MODIFICATIONS AND/OR ADDITIONS TO MUNICIPALITY OF ANCHORAGE STANDARD SPECIFICATIONS

The following listed provisions of M.A.S.S. are amended as hereinafter stated:

A. DIVISION 10 STANDARD GENERAL PROVISIONS

Add the following Section:

SECTION 10.04 SCOPE OF WORK

Article 4.4 Increased Quantities – does not apply

Article 4.5 Decreased Quantities – does not apply

Article 4.17 Utilities

Alaska Communication Systems (ACS) North ANC – Francisco Martin, 564-1785 or 231-7369

Areawide Park, Trail and Park Facility Improvements

INDEX TO SPECIAL PROVISIONS (CONT.)

PAGE

Alaska Communication Systems (ACS) South ANC – Duilio Guerrero, 564-1522	
Anchorage Water & Wastewater Utility (AWWU) – Shawn Dooley, 564-2786	
AT&T –Mike Barsalou, 264-7325	
Chugach Electric Association (CEA) – Victor Willis, 230-7536	
ENSTAR Natural Gas – Stan Staples, 334-7777	
GCI Cable – Steven Cranford, 868-6769	
Municipal Street and Storm Drain Maintenance –Eric Hodgson, 343-8100	
Municipal Street Lights – Eric Hodgson, 343-8100	
Municipal Traffic Signals Section – Mike Sickler, 343-8355	
Solid Waste Services (SWS) – Evalu Filitaula, 343-6258 or 317-6863	
Matanuska Electric Association (MEA) – John Foutz, 761-9265	
Matanuska Telephone Association (MTA) – Robbie Nash, 761-2704	
Eagle River Street & Storm Drain Maintenance – Mark Littlefield, 343-1512	
Alaska Waste – Josh James, 688-4446	

Add the following Articles:

Article 4.22 Additional Construction Services and/or Construction Materials

The Contractor agrees upon request of the Engineer to provide for the benefit of the Municipality any additional construction services, materials or non-bid items at the best available prices.

The Contractor may receive some of the materials from the MOA material storage in order to complete the Work. When materials have been received from the MOA material yard, such materials must be replaced by the Contractor and delivered to the MOA supply yard. The material will be paid for based on Article 7.3 Payment for Time and Material.

Other construction services and materials which may be required to fulfill the scope of the agreement may be requested by the Engineer. The Contractor shall provide to the Engineer a written quotation for approval prior to proceeding with any Work and shall proceed only upon written notice by the Engineer. These additional services and materials will be paid for at the Contract unit or lump sum prices, at negotiated unit or lump sum prices, or on a time-and-material basis as described under Article 7.3 Payment for Time and Material. In the case of a negotiated price, the Contractor shall furnish a price breakdown with his proposal which is itemized as required by the Engineer. The breakdown shall be in sufficient detail to permit an analysis of all materials, labor, equipment, subcontracts, insurance, bonds, overhead costs, and profit shall cover all Work involved to accomplish the

modification whether deleted, added, or changed. Any amount claimed for subcontracts shall be supported by a similar price breakdown.

After completion of the Work, the Contractor shall provide all material invoices and receipts and a log of equipment time for payment, as requested by the Engineer. No payment will be made until the Engineer reviews and approves the submitted invoices, receipts, and logs of equipment time.

SECTION 10.05 CONTROL OF WORK

Article 5.24 Suspension of Work

Add the following:

Where the Work is suspended for adverse winter weather conditions, Contractor is not entitled to additional compensation. However, there may be cases where tasks need to be constructed during winter weather conditions, therefore any additional costs due to working in winter weather conditions may need to be negotiated.

SECTION 10.06 LEGAL RELATIONS AND RESPONSIBILITIES

Article 6.1 Laws to be Observed

Add the following paragraph:

Owner is not aware of any contaminated material within the project limits. If such material is encountered, Contractor shall notify the Engineer immediately for direction. This will be treated as a changed condition, unless the contamination was caused by Contractor's operation.

SECTION 10.07 MEASUREMENT AND PAYMENT

Add the following Article:

Article 7.0 Payments to Contractors and Subcontractors

Portions of this Contract may be funded (in part or in its entirety) by the State of Alaska; for these, the Provisions of Alaska Statute 36, Section 36.90, Article 3, entitled "Public Construction Contract Payment," apply.

Article 7.2 Scope of Payment

Add the following Article:

Article 7.9 Mobilization, Demobilization, and Security

The Contractor shall be paid a contingent sum of \$500.00 for each assigned task that totals over \$10,000. The purpose of this is to cover Mobilization and Demobilization for larger tasks to and from the task site.

The Contractor shall provide security for its equipment and materials at all job sites. The Contractor shall hold the Municipality harmless for any damage which may occur to Contractor's equipment or materials during the course of any project.

B. DIVISION 20 STANDARD CONSTRUCTION SPECIFICATIONS

SECTION 20.20 UNCLASSIFIED FILL AND BACKFILL

Article 20.2 Material

Replace the first sentence with the following:

Unclassified Fill and Backfill shall be defined as excavation or use of Owner furnished stockpiled material determined by the Engineer to be unsuitable for Classified Fill and Backfill and is suitable for deposition in non-structural zones.

SECTION 20.21 CLASSIFIED FILL AND BACKFILL

Article 21.2 Material

Add the following paragraph after the second paragraph:

Crushed waste glass (cullet) may be combined with soil-aggregate material and used in Type II or Type II-A classified fill and backfill. If glass cullet is incorporated, classified fill and backfill shall contain not more than ten percent (10%) by weight glass cullet smaller than three-eighths-inch (3/8"). Contractor shall ensure that glass cullet is uniformly blended with natural soil aggregate material prior to project delivery and placement. Glass cullet must conform to the specifications in Sub article G – Glass Cullet of this Article. In addition to the normal gradation documentation for classified fill or backfill, when glass cullet is used the Contractor shall provide documentation certifying that the glass cullet (1) is comprised only of eligible types of glass, (2) does not contain prohibited materials, (3) meets debris content requirement, and (4) meets blending percentage requirement to the Engineer prior to placement of the material.

Add the following Sub Article G:

G. Crushed Waste Glass (Cullet)

Glass cullet shall be free of prohibited or hazardous substances and the cullet shall contain no more than two percent (2.0%) debris as determined in AASHTO M318.

Eligible glass products from which glass cullet may be produced include:

- food and beverage container glass;
- plain ceramic or China dinnerware; and
- building window glass.

Prohibited glass products include:

- automobile windshields or other glass from automobiles.
- light bulbs of any type.
- porcelain products.
- laboratory glass.
- television, computer, or other cathode ray monitor tubes.

Article 21.3 Construction

Add the following after the last paragraph:

Contractor shall not use classified fill and backfill incorporating glass cullet:

- within four feet (4') from the face of any embankment slope.
- within one hundred and fifty feet (150') of any surface water body.
- in embankment areas where culvert placement is required.
- in contact with any geotextile or geosynthetic material.
- in any soil-aggregate base or subbase courses that are not covered by surfacing material.

Article 21.4 Measurement

Add the following after the last paragraph:

Use of glass cullet is incidental to the bid item Classified Fill and Backfill and no additional payments shall be made.

SECTION 20.22 LEVELING COURSE

Article 22.1 General

Add the following:

The Work in this Section shall include the labor and materials required to provide and place Leveling Course finished base in final preparation for the Synthetic Turf safety surfacing.

Article 22.3 Construction

Replace the following:

D. Compacting

The leveling course shall be compacted to a minimum of ninety-five percent (95%) of maximum density. In all places not accessible to the rolling equipment, the mixture shall be compacted with tamping equipment. Blading, rolling and tamping shall continue until the surface is smooth and free from waves and inequalities and conforms to the elevations shown on the drawings. If at any time the mixture is excessively moist, it shall be aerated by means of blade graders, harrows or other approved equipment until the moisture content is such that the surface can be recompacted and finished as specified above. The finished leveling course shall be maintained by the Contractor in the above condition until written approval from the Engineer accepting the final grade and surface condition is obtained. Contractor shall use caution when mechanical compaction around newly placed playground equipment and newly placed concrete surfaces. Special protection of equipment and concrete sidewalks may be required. Any damage to the newly placed playground equipment shall be repaired and/or replaced at the expense of the Contractor.

Contractor shall note that compaction around newly placed playground equipment is critical to the functionality and life span of the Synthetic Turf or Tile Safety Surfacing systems.

E. Smoothness Test for Leveling Course beneath Synthetic Safety Surfacing

The Leveling Course must be thoroughly compacted by using a compactor plate, tamper, or combination of both. This is of critical importance so that settling of the crushed stone base does not happen after installation of the Synthetic Safety Surfacing system. The finished base must be a level plane with a slope between 1% and 2% that is smooth and without 1/4" deviation as measured with a 10-foot straightedge.

Article 22.4 Measurement

Remove the first sentence and replace with the following:

The leveling course shall be measured in tons of materials delivered and placed in accordance with these Specifications and adjusted for excess moisture as provided.

C. DIVISION 30 STANDARD CONSTRUCTION SPECIFICATIONS FOR PORTLAND CEMENT CONCRETE

C. DIVISION 30..... STANDARD CONSTRUCTION SPECIFICATIONS FOR PORTLAND CEMENT CONCRETE

SECTION 30.01 GENERAL

Article 1.10 Protection of Work

Areawide Park, Trail and Park Facility Improvements

Add the following:

It shall be the responsibility of the Contractor to protect all concrete surfaces until final acceptance is issued. This shall include, but is not limited to, graffiti, scaring, earthen debris, general public use, construction activities and markings prior to final curing.

Any chalk line and/or measurement marks used during decorative scoring shall be cleaned and/or visually absent post curing.

Article 1.11 Clean-Up

Add the following:

A final pressure washing of concrete shall be completed just prior to final inspection.

SECTION 30.02 PORTLAND CEMENT CONCRETE, CURB AND GUTTER, AND VALLEY GUTTER

Article 2.3 Construction

A. Erecting Forms

Add the following:

All forms shall be verified by the Contractor to have proper dimensions to ensure playground equipment safety-zones and use-zones can be accommodated. These safety-zones and use-zones can be found in the Play Equipment in Index IV. The Contractor shall be responsible for all coordination and adjustment of equipment and all P.C.C. Curb Type 7 – Play Curb. The Contractor shall contact the Engineer prior to any modifications to layout as shown in Contract Documents. The Engineer shall review any modifications prior to acceptance.

E. Expansion and Contraction Joints

1. Expansion Joints

Add the following:

Expansion Joints for the 'P.C.C. Curb Type 7 – Play Curb, shall be placed behind curbing adjacent to other proposed concrete surfaces.

2. Contraction Joints

Add the following:

Contraction Joints for the 'P.C.C. Curb Type 7 – Play Curb, shall be cut to a depth of 1-inch prior to the final set of concrete at intervals of four (4) feet or as directed by the Engineer.

Article 2.4 Measurement

Add the following:

P.C.C. Curb Type 7 – Play Curb shall be measured along the centerline of each curb type as completed in place and accepted by the Engineer. Payment shall include all transition control joints, rebar, forms, and miscellaneous materials to construct these curbs as shown on the Drawings.

Article 2.5 Basis of Payment

Add the following:

ITEM	UNIT
P.C.C. Curb Type 7 – Play Curb	Linear Foot

D. DIVISION 40 STANDARD CONSTRUCTION SPECIFICATIONS FOR ASPHALT SURFACING

SECTION 40.01 GENERAL

Add the following Article:

Article 1.7 Asphalt Price Adjustment

This provision provides a price adjustment for asphalt cement material by:

1. an increase to the contract amount, or
2. a deduction from the contract amount.

The provision shall apply to asphalt concrete pavement which:

Areawide Park, Trail and Park Facility Improvements

- is a major bid item as defined in M.A.S.S. Division 10, Section 10.04, Article 4.5 – Increased Quantities;
- is placed in the second or later year of the contract;
- conforms to M.A.S.S. Division 40, Section 40.06 – Asphalt Concrete Pavement; and
- is paid pursuant to M.A.S.S. Division 40, Section 40.06 – Asphalt Concrete Pavement and Section 40.07 – Stone Mastic Asphalt Concrete Pavement.

This provision shall only apply to cost changes in the asphalt cement material that occurs between the date of bid opening and the date the asphalt material is incorporated into the project.

The asphalt price adjustment shall only apply when there is more than a seven and one-half percent (7.5%) increase or decrease in the Alaska Asphalt Material Price Index from the date of the bid opening to the date the asphalt material is incorporated into the project.

As used in this Article, the Alaska Asphalt Material Price Index is calculated bi-monthly on the first and third Friday of each month, and will remain in effect from the day of calculation until the next bi-monthly calculation. The Alaska Asphalt Material Price Index is posted on the ADOT&PF’s Statewide Materials website, and is calculated according to the formula posted therein.

The Asphalt Price Adjustment (APA) payment is cumulative and is calculated with each progress payment. Asphalt material price index in effect on the last day of the pay period is used to calculate the price adjustment for asphalt cement material incorporated into the project during that pay period. The Municipality will increase or decrease payment under this contract by the amount determined with the following asphalt cement material price adjustment formula:

$$\text{APA } \{\text{price } \text{increase/decrease}\}^* = [(\pm \text{ IPP } \mp \text{ IB}) - (0.075 * \text{ IB})] * \text{ Q } * \% \text{ AC}$$

Where,

Q = quantity of asphalt concrete pavement incorporated into the project during the pay period, in tons, and documented by weight tickets;

IB = Index at bid: the bi-monthly Alaska asphalt material price index in effect on date of bid, in dollars per ton;

IPP = Index at Pay Periods: the bi-monthly Alaska asphalt material price index in effect on the last day of the pay period, in dollars per ton; and

%AC = percentage asphalt cement content in the asphalt concrete pavement, as determined by the average asphalt cement content in project's asphalt concrete quality control testing.

* Note: a negative price adjustment (APA) results in a price reduction to the Contract.

Method of measurement for determining quantity, Q, is the weight of asphalt concrete pavement material that conforms to M.A.S.S. Division 40, Section 40.06 – Asphalt Concrete Pavement and is incorporated into the project.

No asphalt price adjustment will be paid based on estimated quantities.

Contingent Sum payment shall be made on the following basis:

The final asphalt price adjustment on a project is the aggregate of the price adjustments paid on a project's respective progress pay estimates, i.e.,

$$APA = APA_1 + APA_2 + \dots + APA_n$$

Where n = partial payment estimate number.

- E. **DIVISION 55 STANDARD CONSTRUCTION SPECIFICATIONS FOR STORM DRAIN SYSTEMS**
- F. **DIVISION 70 STANDARD CONSTRUCTION SPECIFICATIONS MISCELLANEOUS**

SECTION 70.12 TRAFFIC MAINTENANCE

Amend the following Article:

Article 12.6 Public Notice

Delete the first paragraph, inclusive of the list of local officials and transportation organizations, and replace with the following:

The Work Site Traffic Supervisor shall give notices of changes, delays, or lane/road closures to the following local officials and transportation organizations including, but not limited to:

1. Anchorage Chamber of Commerce 272-2401
2. Alaska Travel Industry Association 929-2842
3. Alaska Trucking Association 276-1149
4. Alaska State Troopers 428-7200

INDEX TO SPECIAL PROVISIONS (CONT.)

PAGE

5. Alaska Court System	264-8232
6. Anchorage Police Department	786-8500
7. Anchorage Fire Department	267-4950
8. Local Emergency Medical Services	267-4950
9. Anchorage Public Transportation	343-8253/8386
10. ASD Pupil Transportation	742-1207
11. U.S. Postal Service	266-3261
12. MOA Parks and Recreation	
13. Local Schools and Universities	
14. Volunteer Fire Departments (applicable if operating in the	
15. Local Solid Waste Utilities	
16. Commercial Vehicle Enforcement	365-1203

Article 12.8 Authority of the Engineer

Add the following:

When, in the opinion of the Engineer, conditions are such that the safety and/or convenience of the traveling public are adversely affected, the Engineer will immediately notify the Contractor in writing. The notice will state the defects, the corrective actions allowed, and the time required to complete such actions. In no case shall this time exceed twelve (12) hours. In the event that the Contractor fails to take the corrective actions within the specified time, (a) the Engineer will immediately direct that the offending operations cease until the defects are corrected, and (b) the Engineer reserves the right to order the corrective actions be accomplished by outside forces. The Engineer will deduct the cost of Work by outside forces from any moneys due or that may become due under the terms of this Contract.

Add the following Sections:

SECTION 70.22 MISCELLANEOUS LABOR

Article 22.1 General

The Contractor shall provide a Labor Crew to accomplish certain Work items that are not determined at the beginning of the project. The Two Person Labor Crew shall be used only for extra, additional, or unanticipated Work required for change in the project, as directed the Engineer.

Article 22.2 Basis of Payment

Payment for this Work shall be in accordance with M.A.S.S. Section 10.07 Measurement and Payment as amended in these specifications and shall include full payment for all Work as described in this Section.

Payment shall be made under the following unit:

<u>ITEM</u>	<u>UNIT</u>
One Person Labor Crew	Hour
Two Person Labor Crew	Hour

SECTION 70.23 SAWCUT ASPHALT OR CONCRETE

Article 23.1 General

Existing asphalt pavement or concrete shall be sawcut where it will be joined by new asphalt or concrete. This work includes saw cutting as shown on the plans or as directed by the Engineer.

Article 23.2 Construction

The sawcut pavement or concrete shall be removed without lifting or otherwise disturbing the pavement or concrete to remain. Tack coat shall be applied to the sawcut asphalt face prior to paving. This item shall include all depths of thickness to sawcut.

Article 23.3 Basis of Payment

Payment for this work shall be in accordance with M.A.S.S. Section 10.07 Measurement and Payment amended in these specifications and shall include full payment for all Work described in this Section.

Payment will be made under the following unit:

<u>ITEM</u>	<u>UNIT</u>
Sawcut Asphalt or Concrete	Linear Foot

Add the following Section:

SECTION 70.24 ROOTWAD BANK STABILIZATION

Article 24.1 General

This work under this Section consists of performing all operations pertaining to the construction of the stream banks using coir logs, brush layering, dormant willow cuttings, root wads, and salvaged vegetative mat.

Location of the bank to be reconstructed is shown in the Drawings. The Contractor is advised to review this plan and submit any changes to the Engineer in writing before implementing a modified plan.

The Contractor shall be in compliance with the all federal, state and municipal permits including but not limited to the Alaska Fish Habitat Permit (currently under review). This permit will include specifications, limitations, and stipulations beyond this Section and it shall be the contractor responsibility to be familiar with said permit and all details within.

Refer to “Stream Bank Revegetation and Protection: A Guide for Alaska,” published by the Alaskan Department of Fish and Game and available online or in hard copy, for technique descriptions and visual aids.

<http://www.adfg.alaska.gov/index.cfm?adfg=streambankprotection.main>

Article 24.2 Materials

Contractor shall be responsible for obtaining, mobilizing, operating, and maintaining all materials and equipment necessary to complete the technique, including damming materials, machinery, materials, sediment & erosion control, pumping facilities, and the like.

Contractor shall submit a bank reconstruction work plan 2 weeks prior to beginning stream bank reconstruction work detailing, at minimum, the following:

1. Work sequence and schedule including anticipated in water work duration
2. Equipment and personnel to be utilized
3. Stream diversion and dewatering plan
4. Material list, certifications, suppliers and procurement dates as applicable

Root wad Bank Reconstruction. Salvage logs and rootward of trees (minimum of 8-inches in diameter at breast height) 12 inches in diameter at breast height with a root fan of a minimum 6 feet in diameter with 70% of roots in-tact. Footer, header, and stringer logs consist of logs 8 inches or greater in diameter and 6 to 10 feet in length without root fans attached. Do not remove woody material from active stream channel outside of channel realignment.

Article 24.3 Construction

Maintain equipment utilized in and around streams in a clean and orderly fashion. Immediately repair any fluid or fuel leaks. To the greatest extent possible, remove all contaminated material from the site and dispose of in accordance with all State and Federal laws. An oil spill containment kit is

required on each job site when working in and around the stream. At a minimum, the kit shall include tarps and oil- absorbent pads.

Base equipment selection on the minimum size necessary to perform the work and minimize the impacts to the adjacent banks and streambed. Submit a list of equipment anticipated to be used for the job to the Engineer prior to commencing construction activities.

Excavation. Excavate according to Section 20.10 Excavation for Traffic Ways as appropriate. Control excavated material to minimize disturbance to the adjacent channel and banks. Incorporate salvaged streambed materials into the project if required gradations are in accordance with the Drawings and specifications or directed by the Engineer.

Streambank Reconstruction. Construct banks as specified in the Drawings, including the use of culvert infill material, Class II Riprap, logs, woody slash and debris, native plant materials, and vegetative mat. The salvage, transport, stockpiling and placement of native soil and topsoil, vegetative mats, and in- stream structures shall be completed in agreement with these specifications and as shown on the Drawings. All disturbances resulting from construction of the new channel shall be contained by appropriate erosion and sediment control devices.

Construct banks before placing the material in the reconstructed channel. Construct bank faces to be uneven, protrude into the channel, and be rough in appearance. Construct the top of the bank to be fairly uniform. Tie back constructed banks and margins at the edge of the structure walls into the existing

streambanks at dimensions similar to those found in the field or as shown in the Drawings.

Construct root wad banks in the following sequence or as approved by the Engineer:

- a. Refer to pages 70 to 73 in "Stream Bank Revegetation and Protection: A Guide for Alaska."
- b. Install root wads after placing 4"-6" cobbles wrapped in coir fabric to the elevations shown in the Plans. Provide relatively level surfaces for placing footer logs and rootward boles. Provide adequate space to accommodate a 10-foot-long tree bole, or as directed in the Plans.
- c. Minimize disturbance to stable embankment beyond necessary excavation limits required to place salvaged river bed material and Class II Riprap.

- d. Place footer logs parallel to bank and set into cobbles approximately 1 to 3 feet behind face of cobble mat. Overlap ends of footer logs by at least 2 feet.
- e. Place boles onto prepared footer logs and cobble mat so that bole is level to the river bed, perpendicular to river flow, with fans parallel to the bank. Center of bole should be approximately at ordinary high water or bankfull elevation as indicated on the Plans. Place boles in parallel so that adjacent root fans overlap by a minimum of 3 feet. Drive #5 rebar through each bole and footer log so that rebar extends at least 1 foot into bank below footer log or until refusal against stone pieces. Bend over top of rebar stake to prevent rebar from sliding down through bole and footer log.
- f. Place header logs perpendicular to boles near root wad approximately even with footer logs. Drive #5 rebar through header log and each bole so that rebar extends at least 1 foot into footer log. Bend over top of rebar stake to prevent rebar from sliding down through header log and bole. At end of header logs, overlap adjacent header logs by at least 2 feet and pin with #5 rebar onto the same bole so that rootwads are connected as a single unit.
- g. Place stringer log perpendicular to boles near end of trunk away from rootward. Drive #5 rebar through stringer log and each bole so that rebar extends at least 1 foot into bank below stringer log or until refusal against stone pieces. Bend over top of rebar stake to prevent rebar from sliding down through stringer log and bole. At end of stringer logs, overlap adjacent stringer logs by at least 2 feet and pin with #5 rebar onto the same bole so that root wads are connected as a single unit.

- h. Place coir fabric over boles, header and string logs. Insure that sufficient coir fabric is placed at the root wads and bank to allow for wrapping around the cobble layer (next step).
- i. Place cobbles on top of coir fabric around logs behind root wad fans as shown in Plans, placing stone pieces to lock stringer logs and boles into cobble mat. Cover cobbles with coir fabric and wrap ends from bottom of cobble layer to top of cobble layer.
- j. Use Class II Riprap to tie constructed river bank into existing stabilized river bank at the upstream and downstream ends of the bank reconstruction work.
- k. Place backfill as shown in the plans layering dormant willow cuttings along the bank.

Article 24.4 Measurement

Root wad bank reconstruction shall be paid for by the linear foot of bank construction measured from center of bole to center of bole along the ordinary high water line, as shown in the plans, or as directed by the Engineer.

Article 24.5 Basis of Payment

Linear foot measurement for Root wad Bank Stabilization shall include all labor materials, and equipment required to construct the erosion control system as shown in the plans. Construction shall include but not limited to excavation, dewatering, damming, soil mixing, placing of riprap, boles, and willows, and backfill to bottom of trail reconstruction typical section.

Payment shall be made under the following unit:

ITEM	UNIT
Root wad Bank Stabilization	LF

SECTION 70.25 SITE FURNISHINGS

Article 25.1 Description

This work item includes furnishing the labor, equipment, assembly, and materials, for the complete installation of all site furnishings, including owner supplied site furnishing.

Article 25.2 Material

Materials shall be in accordance with Manufactures recommendations and these specifications.

Article 25.3 Owner Supplied Furnishing

All furnishings listed below are Owner-supplied, Pick up location is at the South Park Maintenance Building 11440 Lang Street: Pick up shall be coordinated through Project Management & Engineering, 343-8387. Contractor is solely responsible for assembling, loading, transporting, and installing all owner supplied furnishings.

A. Park Benches

Manufacturer: Victor Stanley
Model: Parsons Series P-8 and P-4, 6-foot
Materials: Powder coated steel with Ipe wood slates
Color: Tavern Square Green
Weight: 276 lbs
Installation: Surface Mount

B. Animal-Proof Receptacle

Manufacturer: Haul All
Model: Hid-A-Bag
Materials: 10 gauge steel plates
Color: RAL 6015
Weight: 225 lbs/Single
Installation: Surface Mount

C. Picnic Table

Manufacturer: Victor Stanley
Model: Parsons Series-PT-2
Materials: Powder coated steel with Ipe wood slats
Weight: 380 lbs
Installation: Variable

D. Picnic Table – Round

Manufacturer: Victor Stanley
Model: Steelsites Series RND-ACS-2
Materials: Powder coated steel
Installation: Free Standing

Article 25.4 Manufacturer and Local Representative:

Victor Stanley

Megan Somosky, megans@victorstanley.com, 800.368.2573 x 306

No local Representative

Article 25.5 Construction

Install and assemble all furnishing and play equipment per manufacturer's specifications. Where applicable all anchor posts shall be embedded in a concrete (M.A.S.S. Class A-3) footing.

Article 25.6 Measurement

All materials used for assembly and installation of site furnishing shall be incidental to the cost of each individual item.

Article 25.7 Basis of Payment

Basis of payment for this work item shall be in accordance with M.A.S.S. Section 10.07 and shall include full payment for all work described.

Payment shall be made under the following units:

<u>ITEM</u>	<u>UNIT</u>
Install Owner Supplied Park Bench	Each
Install Owner Supplied Picnic Table	Each
Install Owner Supplied Animal-Proof Receptacle	Each

SECTION 70.26 WORK INCIDENTAL TO THE CONTRACT

Several items of Work, not covered in the Bid Proposal, will be considered incidental to the cost of the Contract. These items shall include, but are not limited to, the following:

1. Sheeting, shoring, and bracing of trench walls.
2. Shoring power poles.
3. Removal and replacement of concrete barriers.
4. Dewatering of excavation and pipe trenches for excavation purpose and for achieving required compaction.
5. Resetting disturbed property corners or monuments.
6. Providing safe hauling routes and Traffic Control Plan, prior to beginning construction, for hauling unusable excavation and site access.
7. Post-construction cleanup.

G. DIVISION 75 STANDARD CONSTRUCTION SPECIFICATIONS FOR LANDSCAPING IMPROVEMENTS

SECTION 75.02 LANDSCAPING

Article 2.6 Measurement

Add the following paragraph:

Measurement for Bark Mulch shall be the number of 1000 square foot units (MSF) measured to the nearest .1 unit on the ground surface. Stockpiling and re-handling of Bark Mulch during procuring operations, or during placement shall not be measured for payment.

Article 2.7 Basis of Payment

Add the following pay item:

<u>ITEM</u>	<u>UNIT</u>
Bark Mulch (3-inch depth)	MSF

SECTION 75.12 WOOD FIBER SAFTEY SURFACING

Article 12.1 General

Work under this Section shall include the labor and materials required to furnish and install Wood Fiber safety surfacing within the proposed playground safety surface as shown within the construction drawings.

Article 12.2 Material

Description of Product:

- Product is manufactured engineered wood fiber comprised of softwoods and/or hardwoods, consisting of randomly sized wood fibers the majority of which do not exceed 1.5” in length and containing 10% to 20% fines to aid in compaction (it is generally understood that the manufacturing process allows a few oversized pieces).
- Product must prove to be non-toxic. It may not contain any recycled wood products or any wood containing paint, chemicals or additives. Bidder to provide Toxicity Test Data*.
- Product to have minimal bark and to be free of twigs, leaf debris and other organic material, and to be certified as non-flammable*.
- Product depth, after installation, must be in accordance with the procedure described in ASTM F1292 and meet guidelines for critical height as set for by the CPSC for use of wood products for protective surfacing.

ASTM Testing Certification

Manufacturer must be in compliance and provide testing data for the following standards as set forth by the American Standard for Testing Materials (ASTM), for surface systems under and around playground equipment.

- ASTM F1951-99 (previously ASTM PS 83-97) determination of accessibility of surface systems under and around playground equipment*.
- ASTM F1292-96 impact attenuation of surface systems under and around playground equipment*.
- ASTM F2075-01 standard specification for engineered wood fiber for use as playground safety surface under and around playground equipment*.

Materials described herein can be obtained at Valley Sawmill, Anchorage, AK.

Article 12.3 Construction

Installation of wood fiber safety surface shall be per the special details within the construction drawings. The engineer shall pre-approve subgrade and installation of separation fabric prior to the installation of the wood fiber safety surface.

Material shall be loosely cast into the playground area and shall not be traveled upon by construction equipment. Material shall be uniformly raked into place as shown within the construction drawings.

Article 12.4 Measurement

Wood fiber safety surfacing shall be measured per Cubic Yard (CY) in place and accepted by the Engineer. It shall be inclusive of all labor and materials.

Article 12.5 Basis of Payment

Measurement and Payment shall include full payment for all Work described in this Section.

ITEM	UNIT
Furnish and Install Wood Fiber Safety Surfacing	Cubic Yard

H. DIVISION 80 STANDARD CONSTRUCTION SPECIFICATIONS FOR INSTALLATION AND REMOVAL OF TRAFFIC SIGNALS AND ILLUMINATION

Article 7.1 General

Delete the seventh paragraph in its entirety and replace with the following paragraph:

Contractor shall lay conduit to a minimum depth of 42 inches below grade. See M.A.S.S. Section 20.07 Trench Excavation and Backfill for backfill requirements.

END OF SPECIAL PROVISIONS

**MUNICIPALITY OF ANCHORAGE
PARKS AND RECREATION DEPARTMENT**

AREAWIDE PARK, TRAIL AND PARK FACILITY IMPROVEMENTS

III

SUBMITTAL LIST

Areawide Park, Trail and Park Facility Improvements

Submittal List

AREAWIDE PARK, TRAIL AND PARK FACILITY IMPROVEMENTS

SUBMITTAL LIST

Job #: _____ Contractor: _____

Submittal Number	Rev.	Description
10.04.9		Private Property Disposal Site Permission; Fill Permit
10.04.12		Property Owner 48-Hour Closure Notice
10.04.13		Street Closures; Traffic Control Plan
10.04.15		Temporary Erosion and Sediment Control Plan
10.04.19		Record Drawings
10.05.10		Subcontractor's List
30.01.4		Portland Concrete Cement Mix
40.02.3		Asphalt Cement Pavement Mix

NOTE: The above list of submittals is not all inclusive, and shall differ per task. The Contractor is required to comply with all submittal requirements as specified or identified in each of the task's work requests, per M.A.S.S., and/or as directed by the Engineer.

**MUNICIPALITY OF ANCHORAGE
PARKS AND RECREATION DEPARTMENT**

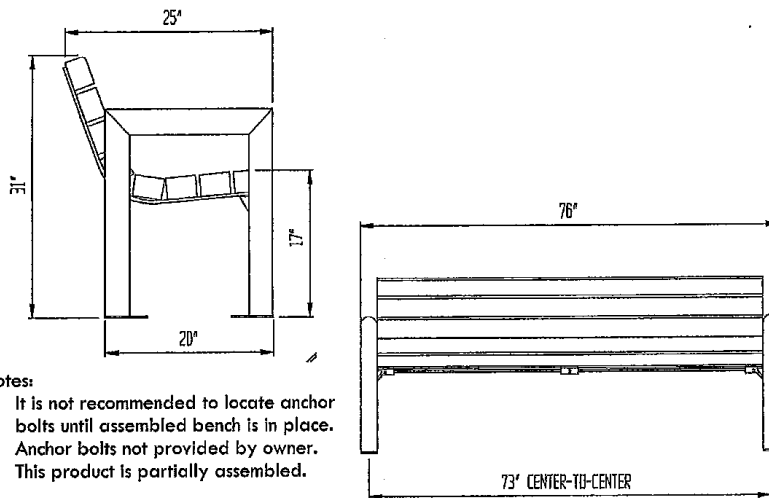
AREAWIDE PARK, TRAIL AND PARK FACILITY IMPROVEMENTS

IV

SPECIAL DETAILS



Park Bench - Owner Supplied



Notes:

1. It is not recommended to locate anchor bolts until assembled bench is in place.
2. Anchor bolts not provided by owner.
3. This product is partially assembled.

Product Description:

Manufacturer: Victor Stanley

Model: Parsons Series, P-8

Contact: Division 10, Rich Chamberlain

Div10inc@alaska.net

(907)345-1633

Materials: Powder coated steel with lpe wood slats

Color: Tavern Square Green

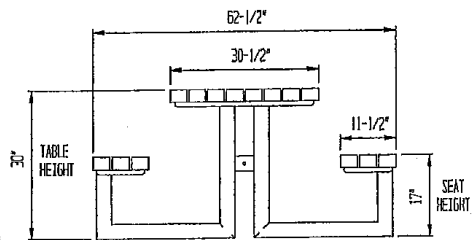
Dimensions: See detail provided

Weight: 276 pounds

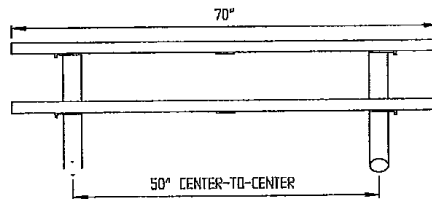
Installation: Surface mount



Picnic Table - Owner Supplied



Notes: This product is partially assembled



Product Description:

Manufacturer: Victor Stanley

Model: Parsons Series, PT-2

Contact: Division 10, Rich Chamberlain

Div10inc@alaska.net

(907)345-1633

Materials: Powder coated steel with lpe wood slats

Color: Tavern Square Green

Weight: 380 pounds

Installation: Free standing

Site Amenity Standards

Animal-Proof
Receptacle

Description:

Manufacturer: Haul All

Model Family: Hid-A-Bag

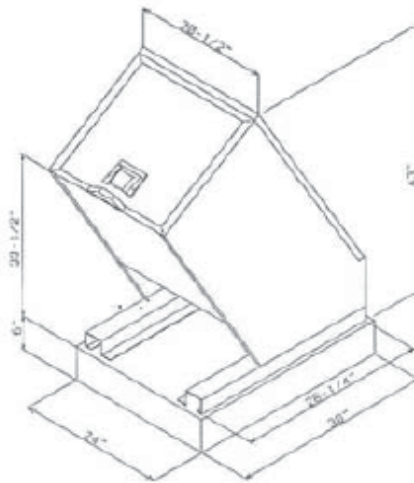
*Contact: Haul All,
Tina Woodland
haulall@whitehorsemotors.com
(867) 668-4847*

Materials: 10 gauge steel plates

Color: RAL 6015

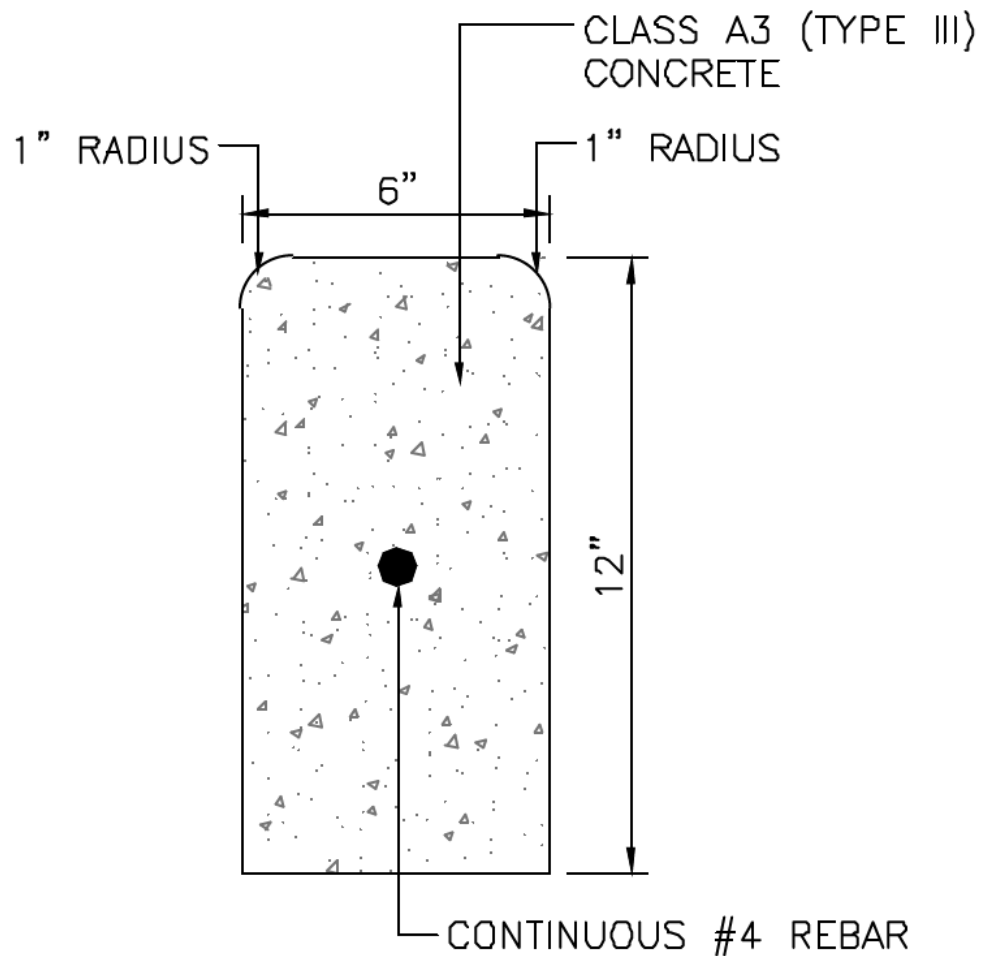
*Size: Single - 72 gallons and
Double - 144 gallons*

Installation: Surface mount



HBI-P
with
Standard
Handle
from
Haul-All





1. EXPANSION JOINT SHALL BE PLACED BEHIND CURBING ADJACENT TO OTHER PROPOSED CONCRETE SURFACES.
2. TRANSVERSE CONTRACTION JOINTS SHALL BE CUT TO A DEPTH OF 1-INCH PRIOR TO THE FINAL SET OF CONCRETE AT INTERVALS OF 10 FEET.

TYPE 7 P.C.C. PARK CURB

NTS

PARKS AND RECREATION DEPARTMENT

AREAWIDE PARK, TRAIL AND PARK FACILITY IMPROVEMENTS

V

EQUAL EMPLOYMENT OPPORTUNITY SPECIAL PROVISIONS

CONTRACT COMPLIANCE SPECIFICATIONS

The successful Bidder shall be required to execute and return such forms as may be necessary to the Equal Employment Opportunity Contract Compliance Officer in accordance with Municipal Regulation 7.50, prior to the award. Failure to complete and return the forms, or failure to meet the requirements of the Regulation, shall be grounds for not awarding a Contract to that Bidder.

These forms may be obtained at the following website: http://www.muni.org/Departments/equal_opportunity/Pages/default.aspx, titled, "Equal Opportunity Special Provisions". These forms are required to be filed on an annual basis from all Contractors who have previously done business with the Municipality as well as new Contractors prior to award of a Contract.

**MUNICIPALITY OF ANCHORAGE
PARKS AND RECREATION DEPARTMENT**

AREAWIDE PARK, TRAIL AND PARK FACILITY IMPROVEMENTS

VI

MINIMUM RATES OF PAY

Laborers' & Mechanics' Minimum Rates of Pay

Title 36. Public Contracts AS 36.05 & AS 36.10 Wage & Hour Administration Pamphlet No. 600 (Pamphlet 600) is hereby incorporated in its entirety. Pamphlet 600 is available for free download at <http://labor.state.ak.us/lss/pamp600.htm>.

The Municipality of Anchorage will include a paper copy of the wage rates in the signed Contract.

**MUNICIPALITY OF ANCHORAGE
PARKS AND RECREATION DEPARTMENT**

AREAWIDE PARK IMPROVMENTS

VII

CONTRACT

Areawide Park, Trail and Park Facility Improvements

Contract

CONTRACT

Invitation to Bid No. **2023C**____

Contract No. **C-2023**_____

NAME AND ADDRESS OF CONTRACTOR:

Check appropriate box:

Incorporated in the State of

MUNICIPALITY OF ANCHORAGE, acting through _____(hereinafter the Owner).

Contract for _____

<u>BID SCHEDULES</u>	<u>ITEMS</u>	<u>PLAN SHEET FILE NUMBERS</u>	<u>AMOUNT</u>
			\$ _____

Total Amount: \$ _____

TOTAL AMOUNT OF CONTRACT EXPRESSED IN WORDS: **AND 00/100 DOLLARS.**

THIS CONTRACT, entered into by the MUNICIPALITY OF ANCHORAGE, ALASKA, acting through the Owner named above, and the individual, partnership, or corporation named above, hereinafter called the Contractor, WITNESSETH that the parties hereto do mutually agree as follows:

Statement of Work: The Contractor shall furnish all labor, equipment and materials and perform the Work above described, for the amount stated, in strict accordance with the Contract Documents.

Areawide Park, Trail and Park Facility Improvements

CONTRACT DOCUMENTS

- I. This CONTRACT consisting of 4 pages.
- II. The Bid Proposal Section XII consisting of seven (7) pages numbered as BP-1 through BP-7 _____, **as contained in ITB 2023C** _____.
- III. The Contract Performance and Payment Bond , Section VIII, _____.
- IV. The Contractor's Certificate of Insurance Dated _____.
- V. Municipality of Anchorage Standard Specifications dated 2009, Revision 1 (MASSA) Incorporated by Reference.
- VI. Specifications consisting of the following:
 - Special Provisions Section II consisting of Twenty (20) _____ pages, numbered 1 _____ through 20 _____, **as contained in ITB 2023C** _____.
 - Technical Specifications Section _____ consisting of _____ pages, numbered _____ through _____, **as contained in ITB 2023C** _____.
- VII. Equal Employment Opportunity Special Provisions and Forms Section V consisting of 1 (one) _____ pages, **as contained in ITB 2023C** _____.
- VIII. Disadvantaged/Women-Owned Business Enterprise (DBE/WBE) Specification Section _____ Consisting of _____ pages, **as contained in ITB 2023C** _____.
- IX. The Laborers' and Mechanics' Minimum Rates of Pay dated April 1, 2009 Section VI _____ consisting of 1 pages, **as contained in ITB 2023C** _____.
- X. Submittal List Section III consisting of one (1) page, **as contained in ITB 2023C** _____.
- XI. Soils Information Section _____ consisting of _____ pages, **as contained in ITB 2023C** _____.
- XII. Temporary Construction Permits and Easements Section _____ consisting of _____, **as contained in ITB 2023C** _____.
- XIII. The Drawings consisting of _____ sheets numbered _____, **as contained in ITB 2023C** _____.
- XIV. Addendum No. _____ through _____.

IN WITNESS WHEREOF, the parties hereto have executed this Contract as of the Contract Date entered below:

MUNICIPALITY OF ANCHORAGE, ALASKA _____

BY _____
(Signature)

Purchasing Officer or designee
(Title)

BY _____
(Signature)

(Title)

(Date of Signature)

BOND SIGNATURE INSTRUCTIONS

1. The full name and business of the Contractor shall be inserted on Page 1 of the Contract and on the Performance and Payment Bond, hereinafter the Bond.
2. Two copies of the Contract and the Bond shall be manually signed by the Contractor. If the Contractor is a partnership or joint venture, all partners or joint ventures shall sign the Contract and the Bond except that one partner or one joint venturer may sign for the partnership or joint venture when all other partners or joint venturers have executed a Power-of-Attorney authorizing one partner or joint venturer to sign. The Power-of-Attorney shall accompany the executed contract and the Bond.
3. If the Contractor is a corporation, the President of the corporation shall execute the Contract and the Bond unless a Power-of-Attorney or corporate resolution shall accompany the executed Contract and Bond.
4. The Bond shall be returned to the Purchasing Division undated. The Contract Date shall be inserted on the Contract when the Municipality signs the Contract and the Bond shall be dated the same as the Contract Date.

**MUNICIPALITY OF ANCHORAGE
PARKS AND RECREATION DEPARTMENT**

AREAWIDE PARK, TRAIL AND PARK FACILITY IMPROVEMENTS

VIII

CONTRACT PERFORMANCE AND PAYMENT BOND

CONTRACT PERFORMANCE AND PAYMENT BOND

KNOW ALL MEN BY THESE PRESENTS, That we _____
_____ of _____
as Principal, and _____
a corporation organized under the laws of the _____
_____ and authorized to transact surety business in the
State of Alaska, of _____
as Surety, are held and firmly bound unto the MUNICIPALITY OF ANCHORAGE, as Obligee, in the
full and just sum of _____
(\$ _____) Dollars, lawful money of the UNITED STATES, for
the payment which, well and truly to be made, we bind ourselves, our heirs, executors,
administrators, successors and assigns, jointly and severally, firmly by these presents.
THE CONDITIONS OF THIS OBLIGATION IS SUCH, that whereas the principal has entered into a
certain contract dated the _____ date of _____ 20 _____,
with the Obligee for the construction of _____

which contract is hereby referred to and made a part hereof as fully and to the same extent as if
copied at length herein.

NOW THEREFORE, if the Principal shall well and truly perform and fulfill all the undertakings,
covenants, terms, conditions, and agreements of said contract, and shall promptly make payments
to all persons supplying labor and material in the prosecution of the work provided for in said contract,
during the original term of said contract and any extensions or modifications thereof that may be
granted by the Municipality, with or without notice to the Surety, then this obligation to be void;
otherwise to remain in full force and effect.

This obligation is made for the use of said Obligee and also for use and benefit of all persons who
may perform any work or labor or furnish any material in the execution of said Contract and may be
sued on thereby in the name of said Obligee.

The said Surety, for the value received, hereby stipulates and agrees that no change, extension of
time, alteration or addition to the terms of the contract or to the work to be performed thereunder or
the specifications accompanying the same, shall in anywise affect its obligations on this bond, and it
does hereby waive notice of any such change, extension of time, alteration or addition to the terms
of the contract or to the work or to the specifications.

Areawide Park, Trail and Park Facility Improvements

Contract Performance and Payment Bond

Whenever Principal shall be, and declared by Obligees to be in default under the Contract the Obligees having performed Obligees' obligations thereunder, the Surety may promptly remedy the default or shall promptly:

1. Complete the Contract in accordance with its terms and conditions, or
2. Obtain a bid or bids for submission to Obligees for completing the Contract in accordance with its terms and conditions and upon determination by Surety of the lowest responsible bidder, or, if the Obligees elects, upon determination by Obligees and the Surety jointly of the lowest responsible bidder, arrange for a contract between such bidder and Obligees and make available as Work progresses (even though there should be a default or a succession of defaults under the contract or contracts of completion arranged under this paragraph) sufficient funds to pay the cost of completion less the balance of the contract price but not exceeding, including other costs and damages for which the Surety may be liable hereunder the amount set forth in the first paragraph hereof. The term "balance of the contract price" as used in this paragraph, shall mean the total amount payable by Obligees to Principal under the Contract and any amendments thereto, less the amount properly paid by Obligees to Principal.

IN TESTIMONY WHEREOF, the parties hereunto have caused the execution hereof in _____ original counterparts as of the _____ day of _____, 20_____.

WITNESS AS TO PRINCIPAL:

Principal Name

Principal Signature

Corporate Surety

(AFFIX CORPORATE SEAL)

Surety Business Address

BY: _____
Attorney-In-Fact)

(AFFIX SURETY SEAL)

**MUNICIPALITY OF ANCHORAGE
PARKS AND RECREATION DEPARTMENT**

AREAWIDE PARK, TRAIL AND PARK FACILITY IMPROVEMENTS

IX

CERTIFICATE OF INSURANCE



CERTIFICATE OF LIABILITY INSURANCE

DATE (MM/DD/YYYY)

THIS CERTIFICATE IS ISSUED AS A MATTER OF INFORMATION ONLY AND CONFERS NO RIGHTS UPON THE CERTIFICATE HOLDER. THIS CERTIFICATE DOES NOT AFFIRMATIVELY OR NEGATIVELY AMEND, EXTEND OR ALTER THE COVERAGE AFFORDED BY THE POLICIES BELOW. THIS CERTIFICATE OF INSURANCE DOES NOT CONSTITUTE A CONTRACT BETWEEN THE ISSUING INSURER(S), AUTHORIZED REPRESENTATIVE OR PRODUCER, AND THE CERTIFICATE HOLDER.

IMPORTANT: If the certificate holder is an ADDITIONAL INSURED, the policy(ies) must be endorsed. If SUBROGATION IS WAIVED, subject to the terms and conditions of the policy, certain policies may require an endorsement. A statement on this certificate does not confer rights to the certificate holder in lieu of such endorsement(s).

PRODUCER 	CONTACT NAME: PHONE: _____ FAX: _____ (A/C, No., Ext): _____ (A/C, No.): _____ E-MAIL ADDRESS: _____ <table style="width: 100%; border-collapse: collapse;"> <tr> <td style="width: 80%; text-align: center;">INSURER(S) AFFORDING COVERAGE</td> <td style="width: 20%; text-align: center;">NAIC #</td> </tr> <tr> <td>INSURER A:</td> <td></td> </tr> <tr> <td>INSURER B:</td> <td></td> </tr> <tr> <td>INSURER C:</td> <td></td> </tr> <tr> <td>INSURER D:</td> <td></td> </tr> <tr> <td>INSURER E:</td> <td></td> </tr> <tr> <td>INSURER F:</td> <td></td> </tr> </table>	INSURER(S) AFFORDING COVERAGE	NAIC #	INSURER A:		INSURER B:		INSURER C:		INSURER D:		INSURER E:		INSURER F:	
INSURER(S) AFFORDING COVERAGE	NAIC #														
INSURER A:															
INSURER B:															
INSURER C:															
INSURER D:															
INSURER E:															
INSURER F:															
INSURED 															

COVERAGES **CERTIFICATE NUMBER:** **REVISION NUMBER:**

THIS IS TO CERTIFY THAT THE POLICIES OF INSURANCE LISTED BELOW HAVE BEEN ISSUED TO THE INSURED NAMED ABOVE FOR THE POLICY PERIOD INDICATED. NOTWITHSTANDING ANY REQUIREMENT, TERM OR CONDITION OF ANY CONTRACT OR OTHER DOCUMENT WITH RESPECT TO WHICH THIS CERTIFICATE MAY BE ISSUED OR MAY PERTAIN, THE INSURANCE AFFORDED BY THE POLICIES DESCRIBED HEREIN IS SUBJECT TO ALL THE TERMS, EXCLUSIONS AND CONDITIONS OF SUCH POLICIES. LIMITS SHOWN MAY HAVE BEEN REDUCED BY PAID CLAIMS.

INSR LTR	TYPE OF INSURANCE	ADDL INSR	SUBR WVD	POLICY NUMBER	POLICY EFF (MM/DD/YYYY)	POLICY EXP (MM/DD/YYYY)	LIMITS
	GENERAL LIABILITY <input type="checkbox"/> COMMERCIAL GENERAL LIABILITY <input type="checkbox"/> CLAIMS-MADE <input type="checkbox"/> OCCUR GEN'L AGGREGATE LIMIT APPLIES PER: <input type="checkbox"/> POLICY <input type="checkbox"/> PRO-JECT <input type="checkbox"/> LOC						EACH OCCURRENCE \$ DAMAGE TO RENTED PREMISES (Ea occurrence) \$ MED EXP (Any one person) \$ PERSONAL & ADV INJURY \$ GENERAL AGGREGATE \$ PRODUCTS - COMPIOP AGG \$ \$
	AUTOMOBILE LIABILITY <input type="checkbox"/> ANY AUTO <input type="checkbox"/> ALL OWNED AUTOS <input type="checkbox"/> SCHEDULED AUTOS <input type="checkbox"/> HIRED AUTOS <input type="checkbox"/> NON-OWNED AUTOS						COMBINED SINGLE LIMIT (Ea accident) \$ BODILY INJURY (Per person) \$ BODILY INJURY (Per accident) \$ PROPERTY DAMAGE (Per accident) \$ \$
	<input type="checkbox"/> UMBRELLA LIAB <input type="checkbox"/> OCCUR <input type="checkbox"/> EXCESS LIAB <input type="checkbox"/> CLAIMS-MADE <input type="checkbox"/> DED <input type="checkbox"/> RETENTION \$						EACH OCCURRENCE \$ AGGREGATE \$ \$
	WORKERS COMPENSATION AND EMPLOYERS' LIABILITY ANY PROPRIETOR/PARTNER/EXECUTIVE OFFICER/MEMBER EXCLUDED? (Mandatory in NH) If yes, describe under DESCRIPTION OF OPERATIONS below						<input type="checkbox"/> WC STATU-TORY LIMITS <input type="checkbox"/> OTH-ER E.L. EACH ACCIDENT \$ E.L. DISEASE - EA EMPLOYEE \$ E.L. DISEASE - POLICY LIMIT \$

DESCRIPTION OF OPERATIONS / LOCATIONS / VEHICLES (Attach ACORD 101, Additional Remarks Schedule, if more space is required)

ADDITIONAL INSURED:

- ADDITIONAL INSURANCE: The Municipality of Anchorage is an additional insured on all policies, and shall contain a WAIVER OF SUBROGATION against the Municipality except Professional Liability and Worker's Compensation.
- CANCELLATION: "Should any of the above described policies be cancelled before the expiration date thereof, notice will be delivered in accordance with the Policy Provisions."

CERTIFICATE HOLDER 	CANCELLATION SHOULD ANY OF THE ABOVE DESCRIBED POLICIES BE CANCELLED BEFORE THE EXPIRATION DATE THEREOF, NOTICE WILL BE DELIVERED IN ACCORDANCE WITH THE POLICY PROVISIONS. AUTHORIZED REPRESENTATIVE
-----------------------------------	----------------------------------------------------------------------------------------------------------------------------------------------------------------------------------------------------------------------------

© 1988-2010 ACORD CORPORATION. All rights reserved.

ACORD 25 (2010/05)

The ACORD name and logo are registered marks of ACORD

**MUNICIPALITY OF ANCHORAGE
PARKS AND RECREATION DEPARTMENT**

AREAWIDE PARK, TRAIL AND PARK FACILITY IMPROVEMENTS

X

BID BOND

BID BOND

KNOW ALL MEN BY THESE PRESENTS, That we, _____
as Principal, and _____ a
corporation organized under the laws of the _____
and authorized to transact surety business in the State of Alaska, of _____
_____ as Surety, are held and firmly bound unto the
MUNICIPALITY OF ANCHORAGE, as Obligee, in the full and just sum of _____
_____ (\$ _____) Dollars,
lawful money of the UNITED STATES, for the payment of which sum, well and truly to be
made, we bind ourselves, our heirs, executors, administrators, successors, and assigns,
jointly and severally, firmly by the presents.

WHEREAS, the said Principle is herewith submitting its proposal for _____

The condition of this obligation is such that if the aforesaid Principal will, within the time
required enter into a formal contract and give a good and sufficient bond to secure the
performance of the terms and conditions of the contract, then this Obligation to be void;
otherwise the Principal and Surety will pay unto to the Obligee the amount stated above.

Signed, sealed, and delivered _____, 20_____
WITNESS AS TO PRINCIPAL:

Contractor Name

Contractor Signature

(AFFIX CORPORATE SEAL)

Corporate Surety

Surety Business Address

BY: _____
(Attorney-In-Fact)

(AFFIX SURETY SEAL)

**MUNICIPALITY OF ANCHORAGE
PARKS AND RECREATION DEPARTMENT**

AREAWIDE PARK, TRAIL AND PARK FACILITY IMPROVEMENTS

XI

BIDDER'S CHECKLIST

BIDDER'S CHECKLIST

INSTRUCTION TO BIDDER

I. GENERAL:

Bidders are advised that notwithstanding any instructions or implications elsewhere in this Invitation to Bid only the documents shown and detailed on this sheet need be submitted with and made part of their bid. Other documents may be required to be submitted after bid time, but prior to award. Bidders are hereby advised that failure to submit the documents shown and detailed on this sheet shall be justification for rendering the bid nonresponsive. Evaluation of bids for responsiveness shall be accomplished in accordance with Anchorage Municipal Code, Title 7.

II. REQUIRED DOCUMENTS FOR BID

NOTE: "Only the following listed items as marked with an "X" are required to be completely filled out and submitted with the bid."

- Bid Proposal consisting of Seven (7) pages numbered BP- 1 through BP- 7. Bid Proposal **Page BP- 2 of 7 must** be manually signed.

- Erasures or other changes made to the Bid Proposal Sheet must be initialed by the person signing the bid.

- Bid Bond, certified check, cashier's check, money order or cash shall be submitted with the bid in the amount indicated.

- All Addenda issued shall be acknowledged in the space provided on the Bid Proposal sheet or by manually signing the Addenda sheet and submitting it prior to the bid opening in accordance with Anchorage Municipal Code 7.20.020C.

III. REQUIRED DOCUMENTS AFTER BID OPENING

The following documents are required within **five (5)** working days of notification by the Purchasing Office. Failure, in whole or in part, to submit the documents required below shall be grounds to determine the Bidder as non-responsive.

- In accordance with AO No. 2019-130 (S), Anchorage Municipal Code 7.20.030 and 7.20.070, Contractor Questionnaire consisting of three (3) Pages, Prime Contractor Form Filled out by Prime Contractor **and** all known subcontractors. **Please review AO NO. 2019-130 (S), AMC 7.20.030 and 7.20.070, and the attached Contractor Questionnaire before submitting a bid.**

**MUNICIPALITY OF ANCHORAGE
PARKS AND RECREATION DEPARTMENT**

AREAWIDE PARK, TRAIL AND PARK FACILITY IMPROVEMENTS

XII

BID PROPOSAL

MUNICIPALITY OF ANCHORAGE
PROJECT MANAGEMENT && ENGINEERING DEPARTMENT

AREAWIDE PARK IMPROVEMENTS, 2023

Project No. 07-52
BID PROPOSAL
(CERTIFICATION)

TO: MUNICIPALITY OF ANCHORAGE
PURCHASING DEPARTMENT
632 W. 6TH AVENUE, SUITE 520
ANCHORAGE, ALASKA 99501

_____,
(date)

SUBJECT: Invitation to Bid No. **2023C0**

PROJECT TITLE: **Areawide Park, Trail and Park Facility Improvements**

Pursuant to and in compliance with subject Invitation to Bid, and other bid documents relating thereto, the bidder hereby proposes to furnish all labor and materials and to perform all work for the construction of the above referenced project in strict accordance with the bid documents at the prices established in the Bid Proposal, pages **BP- 1 through BP- 7** submitted herewith.

The bidder agrees, if awarded the contract, to commence and complete the work within the time specified in the bid documents.

The bidder acknowledges receipt of the following addenda:

Addenda No. _____	Date of Addenda _____
Addenda No. _____	Date of Addenda _____
Addenda No. _____	Date of Addenda _____

Enclosed is a Bid Bond in the amount of _____.
(Dollar Amount or Percentage of Bid)

Type of Business Organization

The bidder, by checking the applicable box, represents that it operates as () a corporation incorporated under the laws of the State of _____, () an individual, () an LLC, () a partnership, () a nonprofit organization, or () a joint venture. If a partnership or joint venture, identify all parties on a separate page.

Company Name

BID PROPOSAL
(CERTIFICATION)

TO: MUNICIPALITY OF ANCHORAGE _____, 2023
PURCHASING DEPARTMENT
632 W. 6TH AVENUE, SUITE 520
ANCHORAGE, ALASKA 99501

SUBJECT: Invitation to Bid No. 2022C051

PROJECT TITLE: Areawide Park, Trail and Park Facility improvements

Pursuant to and in compliance with subject Invitation to Bid, and other bid documents relating thereto, the bidder hereby proposes to furnish all labor and materials and to perform all work for the construction of the above referenced project in strict accordance with the bid documents at the prices established in the Bid Proposal, page **BP- 1 through BP - 7** submitted herewith.

The bidder agrees, if awarded the contract, to commence and complete the work within the time specified in the bid documents.

ONE JOB; LUMP SUM \$ _____

The bidder acknowledges receipt of the following addenda:

Addenda No. _____	Date of Addenda _____
Addenda No. _____	Date of Addenda _____
Addenda No. _____	Date of Addenda _____

Enclosed is a Bid Bond in the amount of _____.
(Dollar Amount or Percentage of Bid)

Type of Business Organization

The bidder, by checking the applicable box, represents that it operates as () a corporation incorporated under the laws of the State of _____, () an individual, () an LLC, () a partnership, () a nonprofit organization, or () a joint venture. If a partnership or joint venture, identify all parties on a separate page.

Is this project Federally Funded?

Yes

No

Company Name

BID PROPOSAL
(CERTIFICATION)
Continued

SUBJECT: Invitation to Bid No. 2022C051

PROJECT TITLE: Areawide Park, Trail and Park Facility improvements

Date

Alaska Contractor's License Number

Company Name (Printed)

Employer's Tax Identification Number

Authorized Representative Signature

Printed Name & Title

Company **Mailing** Address

Company Phone Number

City, State, Zip Code

Company Fax Number

Company **Physical** Address
(if different from mailing address)

Company Email Address

City, State, Zip Code

MUNICIPALITY OF ANCHORAGE
PROJECT MANAGEMENT & ENGINEERING DEPARTMENT

AREAWIDE PARK IMPROVEMENTS, 2023
Project No. 07-52

ITEM NO.	SPEC. NO.	WORK DESCRIPTION	ESTIMATED QUANTITY	UNIT BID PRICE	TOTAL BID PRICE
A-1	20.02	Storm Water Pollution Prevention Plan (SWPPP) Type 1 per LS	1		
A-2	20.04	Clearing & Grubbing per Acre	1		
A-3	20.05	Clearing for bike trail/sidewalk/curb ramp per L.F.	100		
A-4	20.06	Tree Removal, 0 to 5 Each per Each	5		
A-5	20.06	Tree Removal, Over 5 Each per Each	10		
A-6	20.07	Remove of Sidewalk per S.Y.	200		
A-7	20.08	Remove Curb and Gutter, 0 to 50 L.F. per L.F.	50		
A-8	20.09	Remove Pavement, 0 to 200 S.Y. per S.Y.	200		
A-9	20.10	Usable Excavation (Truck Count), over 150 C.Y. per C.Y.	200		
A-10	20.10	Unusable Excavation (Truck Count), 0 to 150 C.Y. per C.Y.	100		
A-11	20.10	Unusable Excavation (Truck Count), over 150 C.Y. per C.Y.	200		
A-12	20.11	Grading Existing Surfaces, 0 to 500 S.Y. per L.F.	500		
A-13	20.18	Filter Rock per Ton	50		
A-14	20.18	Drain Rock per Ton	50		
A-15	20.20	Unclassified Fill and Backfill per C.Y.	50		
A-16	20.21	Classified Fill and Backfill (Type II-A), over 100 Ton per Ton	200		

MUNICIPALITY OF ANCHORAGE
PROJECT MANAGEMENT & ENGINEERING DEPARTMENT

AREAWIDE PARK IMPROVEMENTS, 2023
Project No. 07-52

A-17	20.22	Leveling Course, 1-50 Ton per Ton	50		
A-18	20.22	Leveling Course, >50 Ton per Ton	75		
A-19	20.23	Cobbles per Ton	50		
A-20	20.24	Rip Rap (Class I), 0 to 25 Ton per Ton	25		
A-21	20.24	Rip Rap (Class II), 0 to 25 Ton per Ton	25		
A-22	20.24	Rip Rap (Class III), 0 to 25 Tons per Ton	25		
A-23	20.24	Geotextile (Type-A Separation) per Ton	25		
A-24	20.24	Geotextile (Type-C Drainage) per Ton	25		
A-25	20.25	Insulation Board (R=18), > 1000 S.F. per SF	1,000		
A-26	30.02	P.C.C. Curb and Gutter (Type 7 - Play Curb), 0 to 50 L.F. per L.F.	50		
A-27	30.02	P.C.C. Curb and Gutter (Type 7 - Play Curb), > 50 L.F. per L.F.	100		
A-28	30.03	P.C.C. Sidewalk, 4" Thick, Standard Finish, 0 to 25 S.Y. per S.Y.	25		
A-29	30.03	P.C.C. Sidewalk, 4" Thick, Exposed Aggregate Finish, 0 to 25 S.Y. per S.Y.	25		
A-30	30.05	P.C.C. Structure Retaining Wall (Class A-3), 0 to 25 C.Y. per CY	25		
A-31	30.09	Concrete Parking Bumpers (7' Long) per Each	10		
A-32	30.11	Sidewalk Joint Sealant, 0 to 50 L.F. per L.F.	50		
A-33	40.02	Asphalt for Seal Coat, 0 to 20 Ton per Ton	20		

MUNICIPALITY OF ANCHORAGE
PROJECT MANAGEMENT & ENGINEERING DEPARTMENT

AREAWIDE PARK IMPROVEMENTS, 2023
Project No. 07-52

A-34	40.02	Cover Aggregate, 0 to 20 Ton per Ton	20		
A-35	40.04	Asphalt for Tack Coat, 0 to 5 Ton per Ton	5		
A-36	40.05	Crack and Joint Sealant, > 1,000 L.F. per L.F.	100		
A-37	40.06 95.04	A.C. Pavement (Class D, 2" Thickness), 1 - 100 Ton per Ton	20		
A-38	40.06 95.04	A.C. Pavement (Class D, 2" Thickness), 101 - 500 Ton per Ton	50		
A-39	40.06 95.04	A.C. Pavement (Class D, 2" Thickness), > 500 Ton per Ton	50		
A-40	40.06 95.04	A.C. Pavement (Class E, 2" Thickness), 1 - 100 Ton per Ton	20		
A-41	40.06 95.04	A.C. Pavement (Class E, 2" Thickness), 101 - 500 Ton per Ton	50		
A-42	40.06 95.04	A.C. Pavement (Class E, 2" Thickness), >500 Ton per Ton	50		
A-43	40.11	Remove and Replace Asphalt Surfacing (Class D) per SY	50		
A-44	55.05	Furnish & Install Subdrain (4" Perforated CPEP, Type D Filter Material, Type C Geotextile Fabric) per LF	50		
A-45	55.13	Furnish & Install Culvert with End Sections (18" CMP) per LF	30		
A-45	65.02	2 Person Survey Crew per Hour	40		
A-46	70.10	Traffic Marking 4" White per LF	100		
A-47	70.10	Traffic Marking 4" Yellow per L.F.	100		
A-48	70.10	Traffic Marking, 4" Blue per L.F.	100		
A-49	70.10	Traffic Marking, Blue ADA Symbol, 0 to 5 per Each	1		

MUNICIPALITY OF ANCHORAGE
PROJECT MANAGEMENT & ENGINEERING DEPARTMENT

AREAWIDE PARK IMPROVEMENTS, 2023
Project No. 07-52

A-50	70.13	Furnish & Install Wood Bollard per Each	1		
A-51	70.13	Furnish & Install Removable Steel Rectangular Bollard per Each	1		
A-52	70.22 95.04	One Person Labor Crew per Hour	50		
A-53	70.22 95.04	Two Person Labor Crew per Hour	40		
A-54	70.23 95.04	Sawcut Asphalt or Concrete, 0 to 100 per L.F.	100		
A-52	70.24 95.04	Root wad Bank Stabilization per LF	50		
A-56	70.25 95.04	Install Owner Supplied Park Bench per Each	5		
A-57	70.25 95.04	Install Owner Supplied Trash Receptacle per Each	5		
A-58	70.25 95.04	Install Owner Supplied Picnic Table per Each	5		
A-59	75.02	Perennial (1 gallon container) per Each	50		
A-60	75.02	Shrubs (12" Ht.) per Each	20		
A-61	75.02	Shrubs (18" Ht.) per Each	20		
A-62	75.02	Shrubs (24" Ht.) per Each	20		
A-63	75.02	Trees Picea pungens 'Glauca' (5'-6' Ht.) per Each	20		
A-64	75.02	Trees Populus tremuloides 'Erecta' (3" Caliper) per Each	15		
A-65	75.02	Trees Betula papyrifera (2.5" Caliper) per Each	15		
A-66	75.02 95.04	Bark Mulch (3-inch depth) per 1,000 S.F.	5		
A-67	75.03	Topsoil (2" Thick) per 1,000 S.F.	5		
A-68	75.03	Topsoil (4" Thick) per 1,000 S.F.	5		

MUNICIPALITY OF ANCHORAGE
PROJECT MANAGEMENT & ENGINEERING DEPARTMENT

AREAWIDE PARK IMPROVEMENTS, 2023
Project No. 07-52

A-69	75.03	Topsoil (18" Depth)	per 1,000 S.F.	5		
A-70	75.04	Seeding (schedule A)	per 1,000 S.F.	10		
A-71	75.04	Seeding (Schedule B)	per 1,000 S.F.	10		
A-72	75.04	Seeding (schedule C)	per 1,000 S.F.	10		
A-73	75.04	Seeding (schedule D)	per 1,000 S.F.	10		
A-74	75.10	Concrete Modular Block	per S.F.	100		
A-75	75.11	Boulder (Small, 3x3x3)	per Each	20		
A-76	75.11	Boulder (Small, 3x3x3)	per Each	20		
A-77	75.12 95.04	Wood Fiber Safety Surfacing	per CY	50		

TOTAL _____

CONTRACTOR _____

DATE _____

BID

#REF! \$ _____

Total Basic Bid \$ _____

Total Amount Bid \$ _____