



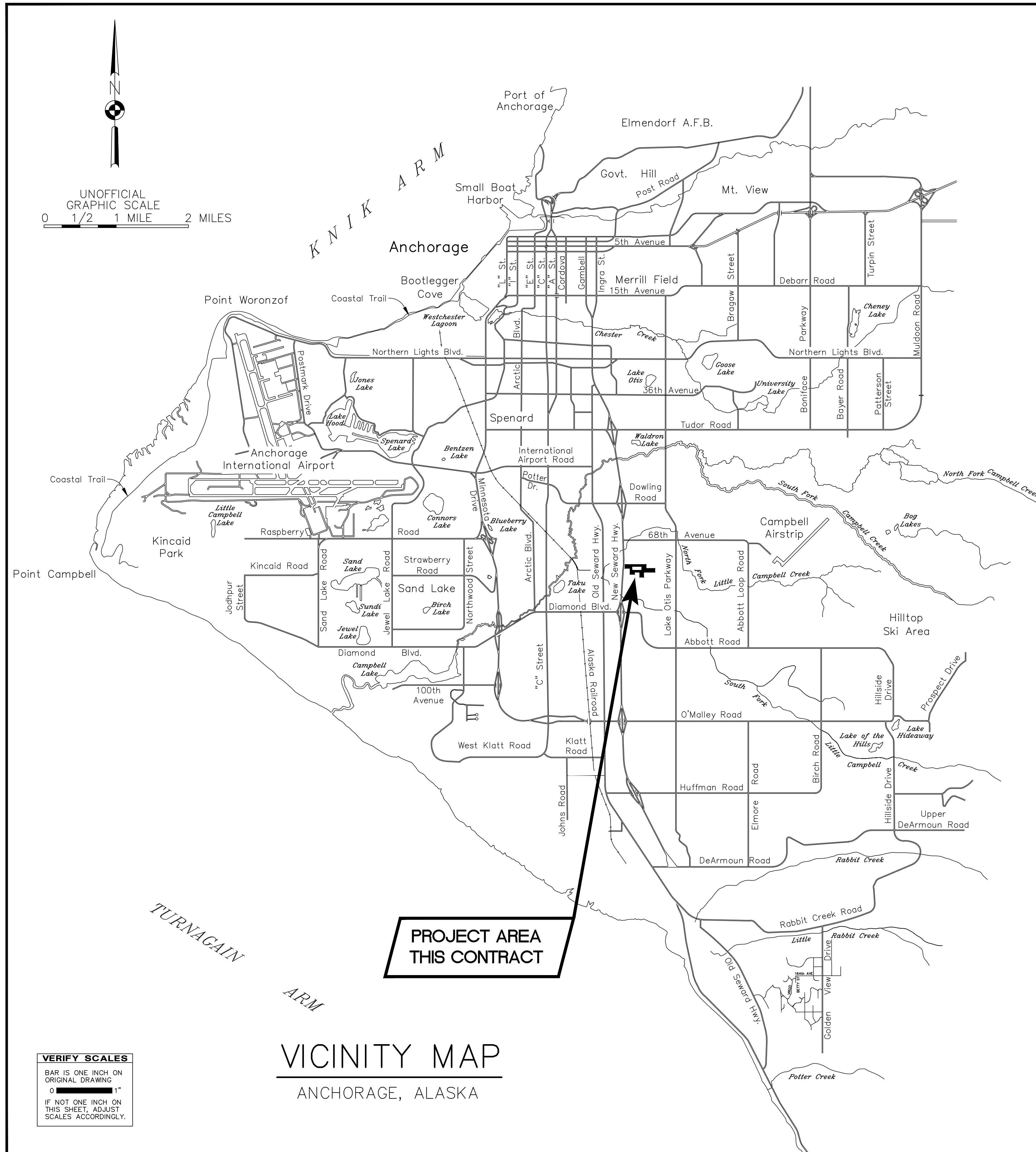
MUNICIPALITY OF ANCHORAGE
OFFICE OF PLANNING, DEVELOPMENT
AND PUBLIC WORKS

E. 74th Ave./E. 75th Ave./NANCY ST. AREA
RECONSTRUCTION
PROJECT No. 21-02

APPROVED BY:

DAVE BRONSON
MAYOR

K. KOHLHASE
DIRECTOR, P.M.&E.



UNOFFICIAL
GRAPHIC SCALE
0 1/2 1 MILE 2 MILES

VERIFY SCALES
BAR IS ONE INCH ON
ORIGINAL DRAWING
0 1"
IF NOT ONE INCH ON
THIS SHEET, ADJUST
SCALES ACCORDINGLY.

VICINITY MAP
ANCHORAGE, ALASKA

PROJECT AREA
THIS CONTRACT

LEGEND

EXISTING	PROPOSED	
⊙		FOUND REBAR WITH ALUMINUM OR PLASTIC CAP
○		FOUND REBAR OR IRON PIN
□		COMPUTED POINT - NOTHING SET
---		R.O.W. CENTERLINE
---		PROPERTY LINE
---		EASEMENT LINE
—○—○—○—○—		FENCE LINE, WOOD
—x—x—x—x—		FENCE LINE, WIRE
—()—		CULVERT (WITH SPLASH PLATES)
—E—		UNDERGROUND ELECTRIC LINE
—T—		UNDERGROUND COMM. LINE (ACS)
—C—		UNDERGROUND COMM LINE (GCI)
—G—		UNDERGROUND GAS LINE
—S—		UNDERGROUND SANITARY SEWER LINE
—SD—		UNDERGROUND STORM SEWER LINE
—W—		UNDERGROUND WATER LINE
—AW—		UNDERGROUND ABANDONED WATER LINE
~~~~~		EDGE OF TREES OR BRUSH
.....		EDGE OF FIELD SURVEY
☁ ☀ ☁		DECIDUOUS / CONIFER / BUSH
■		ROCK (⊙ APPROX. SCALE)
■		BOLLARD / POST / PIPE / CARSONITE
■		MAILBOX
■		GATE POST
⊗		BUILDING SUPPORT
⊗		SATELLITE DISH
⊞		ELECTRIC BOX, TRANSFORMER
⊞		JUNCTION BOX TYPE 1A
⊞		ELECTRIC OUTLET/CAR HEATER OUTLET
⊞		TELEPHONE PEDESTAL
⊞		TELEPHONE VAULT
⊞		CABLE TELEVISION PEDESTAL
⊞		GCI FIBER OPTIC VAULT
⊞		UNDERGROUND UTILITY STUBOUT
○		LUMINAIRE WITH MAST ARM
○		SANITARY SEWER MANHOLE
○		SANITARY SEWER CLEANOUT
⊙		STORM DRAIN MANHOLE
⊙		STORM DRAIN CATCH BASIN MANHOLE
⊙		STORM DRAIN CATCH BASIN
⊙		STORM DRAIN CLEAN OUT
⊙		WATER VALVE BOX / KEY BOX
⊙		FIRE HYDRANT
⊙		SIGN
⊙		SPOT ELEVATION
⊙		FINISH FLOOR AT DOOR SILL
⊙		FINISH FLOOR AT GARAGE DOOR FACE
■		ASPHALT
■		CONCRETE
■		GRAVEL
■		LAWN
■		BUILDING
■		DECKING
■		STAIRS

### PROFILE

EXISTING	PROPOSED	
⊙	⊙	℄
---	---	30' LEFT OF CENTERLINE
---	---	30' RIGHT OF CENTERLINE
—( )—	—( )—	PIPE
▲	▲	MANHOLE (PAVING PROFILE ONLY)
▲	▲	(PAVING PROFILE ONLY)
—( )—	—( )—	CATCH BASIN OR CATCH BASIN MANHOLE
—( )—	—( )—	GRADE AT ℄ OF PAVEMENT
—( )—	—( )—	SANITARY SEWER LINE AND MANHOLE
—( )—	—( )—	STORM DRAIN OR SUBDRAIN LINE AND MANHOLE
⊙	⊙	UNDERGROUND UTILITY CROSSING

### SURVEY NOTES

1. THE FIELD SURVEY FOR THIS PROJECT WAS PERFORMED BY R&M CONSULTANTS, INC. IN AUGUST, 2021. FIELD NOTES ARE LOCATED IN M.O.A. FIELD BOOK NO. 3789, PAGES 41-76 AND FIELDBOOK NO. 3791, PAGES 49-53.
2. A TITLE SEARCH WAS NOT PERFORMED. EASEMENTS NOT SHOWN ON RECORD PLATS MAY EXIST.
3. CONTOUR INTERVAL = 1 FOOT.
4. UNDERGROUND NATURAL GAS, TELEPHONE, FIBER OPTIC, CABLE TELEVISION AND ELECTRIC LINES WERE FIELD LOCATED. PRIVATE SERVICE LINES WERE NOT FIELD LOCATED UNLESS SHOWN HEREON.
5. SOME UNDERGROUND WATER & SEWER HOME SERVICES HAVE BEEN DIGITIZED FROM RECORD DRAWINGS. THESE LINES MAY OR MAY NOT EXIST AS DEPICTED.
6. M.O.A. STREET LIGHTING DID NOT RESPOND TO THE LOCATE REQUEST. UNDERGROUND STREET LIGHTING IS NOT SHOWN.
7. UNDERGROUND NATURAL GAS, TELEPHONE, FIBER OPTIC, CABLE TELEVISION AND ELECTRIC LINES SHOWN IN THE PROFILE ARE AT ASSUMED VERTICAL LOCATION. EXACT VERTICAL LOCATIONS SHOULD BE VERIFIED.
8. 75TH AVENUE ALIGNMENT BETWEEN NANCY STREET AND PETERSBURG STREET IS NOT THE CENTER OF ROW. ALL OTHER ALIGNMENT SECTIONS ARE CENTER OF ROW. THE STREET INTERSECTION AT 74TH AND PETERSBURG IS A DIVIDING LINE BETWEEN ADJOINING PLATS. RETRACEMENTS INDICATE A 0.91' SHIFT IN THE 74TH AVENUE CENTERLINE AT PETERSBURG STREET. THE ALIGNMENT WAS SIMPLIFIED FOR ENGINEERING PURPOSES.
9. WHETHER REPORTED HERE OR NOT, ALL DISTURBED PROPERTY CORNERS SHALL BE REPLACED BY THE CONTRACTOR IN ACCORDANCE WITH THE M.O.A. STANDARD SPECIFICATIONS, SECTION 65.02 CONSTRUCTION SURVEYING, ARTICLE 2.1 PROJECT CONTROL.

### SHEET INDEX

- 1 COVER SHEET
- 2 KEY MAP AND LEGEND
- 3 SURVEY CONTROL
- 4 TOPOGRAPHIC SURVEY PLAN AND PROFILE 74th AVENUE
- 5 TOPOGRAPHIC SURVEY PLAN AND PROFILE 74th AVENUE
- 6 TOPOGRAPHIC SURVEY PLAN AND PROFILE 74th AVENUE
- 7 TOPOGRAPHIC SURVEY PLAN AND PROFILE 75th AVENUE
- 8 TOPOGRAPHIC SURVEY PLAN AND PROFILE 75th AVENUE
- 9 TOPOGRAPHIC SURVEY PLAN AND PROFILE 75th AVENUE
- 10 TOPOGRAPHIC SURVEY PLAN AND PROFILE NANCY STREET
- 11 TOPOGRAPHIC SURVEY PLAN AND PROFILE PETERSBURG STREET
- 12 TOPOGRAPHIC SURVEY PLAN AND PROFILE PETERSBURG STREET


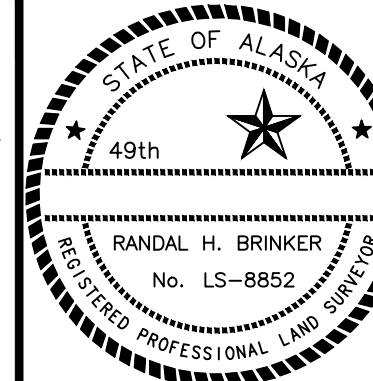

### ABBREVIATIONS

B.O.P.	BEGINNING OF PROJECT / BOTTOM OF PIPE
BM	BENCH MARK
C & G	CURB & GUTTER
CC	CURB CUT
CB	CATCH BASIN
CBMH	CATCH BASIN MANHOLE
CMP	CORRUGATED METAL PIPE
CPP	CORRUGATED POLYETHYLENE PIPE
CONST.	CONSTRUCT
E.O.P.	END OF PROJECT / EDGE OF PAVEMENT
EL/ELEV	ELEVATION
EST.	ESTIMATED
EXIST.	EXISTING
F & I	FURNISH AND INSTALL
F.H./F.HYD.	FIRE HYDRANT
℄	FLOW LINE
I.A.W.	IN ACCORDANCE WITH
INV.	INVERT
M.E.	MATCH EXISTING
P.C.C.	PORTLAND CEMENT CONCRETE
PC	POINT OF CURVATURE
PCMP	PRECOATED CORRUGATED METAL PIPE
℄	PROPERTY LINE
PT	POINT OF TANGENCY
R.P.	RADIUS POINT OF CUL-DE-SAC
R & R	REMOVE AND REPLACE
R.O.W.	RIGHT-OF-WAY
SD	STORM DRAIN
SDMH	STORM DRAIN MANHOLE
S.I.	STREET INTERSECTION
SSMH	SANITARY SEWER MANHOLE
STA	STATION
STD. DTL.	STANDARD DETAIL FOUND IN M.A.S.S., DIVISION 90
TBC	TOP BACK OF CURB
TBM	TEMPORARY BENCH MARK
T.O.N.	TOP OF NUT, WATER VALVE
V.P.I.	VERTICAL POINT OF INTERSECTION
WV (WV)	WATER VALVE BOX
(C)	CALCULATED EXISTING PIPE ELEVATION
⊙	DETAIL AND SHEET NUMBER FOR DETAIL

### CALL BEFORE YOU DIG

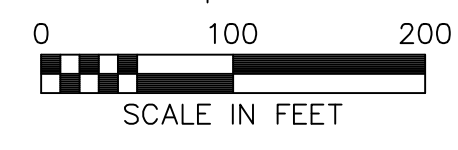
THE CONTRACTOR SHALL NOTIFY ALL AREA UTILITY COMPANIES PRIOR TO COMMENCEMENT OF EXCAVATION. THE FOLLOWING IS A PARTIAL LIST:

LOCATE CALL CENTER OF ALASKA 278-3121  
(INCLUDES ATU, AWWU, CEA, ENG, BUTLER AVIATION/TESORO, PRIME CABLE, MLP, TRAFFIC SIGNALS, MOA STORM/STREETS.)

 <b>AECC111</b> 9101 Vanguard Drive, Anchorage, Alaska, 99507 PH (907) 522-1707 www.rmconsult.com CONSULTANT	 RANDAL H. BRINKER No. LS-8852 PROFESSIONAL ENGINEER	 MUNICIPALITY OF ANCHORAGE	<b>PROJECT MANAGEMENT AND ENGINEERING DEPARTMENT</b>	
			E. 74th/E. 75th/ NANCY ST. AREA RECONSTRUCTION PROJECT No. 21-02 <b>KEY MAP AND LEGEND</b>	
SCALE: N.T.S.	DATE: Aug. 2021	GRID: SW2132/2133	SHEET 2 of 12	
	ACCT. NO.			



- NOTES**
- FIELD SURVEYS FOR THIS PROJECT WAS PERFORMED BY R&M CONSULTANTS, INC. IN AUGUST, 2021. FIELD NOTES ARE LOCATED IN M.O.A. FIELD BOOK NO. 3789, PAGES 41-76 AND FIELDBOOK NO. 3791, PAGES 49-53.
  - BASIS OF COORDINATES IS NGS STATION O'MALLEY, LOCATED NEAR THE INTERSECTION OF NEW SEWARD HIGHWAY AND O'MALLEY ROAD. SAID STATION HAS ANCHORAGE BOWL 2000 COORDINATES OF 303,939.2310 N, 353,362.5446 E. U.S. SURVEY FEET.
  - BASIS OF BEARINGS IS A LOCAL PLANE BEARING BETWEEN NGS STATION O'MALLEY AND NGS STATION LOOP 2 USE RM 3 1964. NGS STATION LOOP 2 USE RM 3 1964 BEARS N 01°43'26.4"W A DISTANCE OF 49488.4476 FEET FROM NGS STATION O'MALLEY. NGS STATION LOOP 2 USE RM 3 1964 HAS ANCHORAGE BOWL 2000 COORDINATES OF 353,405.2778 N, 354,851.3982 E. U.S. SURVEY FEET.
  - TO CONVERT THE LOCAL COORDINATES TO NAD83(92) ZONE 4 STATE PLANE COORDINATES EXPRESSED IN U.S. SURVEY FEET:  
TRANSLATE USING +2,296,868.6878 N, +1,312,517.4904 E,  
SCALE USING 0.9998910192 (BASE POINT 0,0).
  - BASIS OF ELEVATION IS MOA VERTICAL CONTROL NETWORK (1972 NGS ADJUSTMENT) IN U.S. SURVEY FEET. DIFFERENTIAL LEVELS WERE RUN THROUGH PROJECT CONTROL BETWEEN MOA BENCHMARKS MOA 6 & GAAB 20. ERROR OF CLOSURE WAS 0.048'. THIS ERROR WAS ACCEPTED AND PROPORTIONED THROUGH INTERMEDIATE POINTS WITHIN THE LOOP.  
MOA 6 ELEV. = 172.01 FT.  
GAAB 20 ELEV. = 183.44 FT.
  - A TITLE SEARCH WAS NOT PERFORMED; EASEMENTS OF RECORD OTHER THAN THOSE SHOWN ON RECORDED PLATS ARE NOT SHOWN HEREON.
  - USE CAUTION WITH SURVEY CONTROL ALONG LORE ROAD. DUPLICATE AND QUADRUPPLICATE MONUMENTS EXIST AT STREET INTERSECTIONS. REFERENCE R.O.S. PLAT 98-2.
  - 75TH AVENUE ALIGNMENT BETWEEN NANCY STREET AND PETERSBURG STREET IS NOT THE CENTER OF ROW. ALL OTHER ALIGNMENT SECTIONS ARE CENTER OF ROW. THE STREET INTERSECTION AT 74TH AND PETERSBURG IS A DIVIDING LINE BETWEEN ADJOINING PLATS. RETRACEMENTS INDICATE A 0.91' SHIFT IN THE 74TH AVENUE CENTERLINE AT PETERSBURG STREET. THE ALIGNMENT WAS SIMPLIFIED FOR ENGINEERING PURPOSES.
  - WHETHER REPORTED HERE OR NOT, ALL DISTURBED PROPERTY CORNERS SHALL BE REPLACED BY THE CONTRACTOR IN ACCORDANCE WITH THE M.O.A. STANDARD SPECIFICATIONS, SECTION 65.02 CONSTRUCTION SURVEYING, ARTICLE 2.1 PROJECT CONTROL.



HORIZONTAL CONTROL/RECOVERED MONUMENTS			
POINT	NORTHING	EASTING	DESCRIPTION
2	317354.4462	355361.3064	FOUND ALUM. CAP MONUMENT
5	316404.2209	355364.8756	FOUND REBAR MONUMENT
9	317014.0374	355362.6930	FOUND ALUM. CAP MONUMENT
10	316980.7551	354322.9545	FOUND ALUM. CAP MONUMENT
12	316405.5601	356056.6563	FOUND ALUM. CAP MONUMENT
22	317015.4637	355708.6777	FOUND ALUM. CAP MONUMENT

74TH AVE. ALIGNMENT TABLE			
POINT	NORTHING	EASTING	DESCRIPTION
51	316980.1828	354122.9553	STA. 9+00.00 POL, NOTHING SET
51 - 10 N89°50'10"E 200.00'			
10	316980.7551	354322.9545	STA. 11+00.00 SI, FND. ALUM. CAP
10 - 52 N89°50'10"E 379.99'			
52	316981.8424	354702.9397	STA. 14+79.99 SI, NOTHING SET
52 - 53 N89°46'43"E 505.73'			
53	316983.7973	355208.6671	STA. 19+85.72 PC, NOTHING SET
53 - 54 Δ=20'20'47" LT, R=240.40', L=85.37'			
54	316999.1192	355292.1939	STA. 20+71.09 PRC, NOTHING SET
54 - 9 Δ=17'14'22" RT, R=240.40', L=72.33'			
9	317014.0374	355362.6930	STA. 21+43.42 SI, FND. ALUM. CAP
9 - 55 Δ=03'09'08" RT, R=240.40', L=13.22'			
55	317014.4418	355375.9116	STA. 21+56.65 PT, NOTHING SET
55 - 22 N89°49'27"E 332.77'			
22	317015.4637	355708.6777	STA. 24+89.41 POL, FND. ALUM. CAP

75TH AVE. ALIGNMENT TABLE			
POINT	NORTHING	EASTING	DESCRIPTION
56	316701.4262	354603.5041	STA. 30+00.00 POL, NOTHING SET
56 - 24 N89°28'17"E 100.00'			
24	316702.3490	354703.4998	STA. 31+00.00 SI, FND. REBAR BENT
24 - 57 N89°28'17"E 660.32'			
57	316708.4422	355363.7868	STA. 37+60.32 PI, NOTHING SET
57 - 58 N89°44'31"E 414.90'			
58	316710.3101	355778.6850	STA. 41+75.22 PC, NOTHING SET
58 - 59 Δ=16'35'54" LT, R=300.00', L=86.91'			
59	316723.1966	355864.3260	STA. 42+62.13 PRC, NOTHING SET
59 - 60 Δ=16'35'54" RT, R=300.00', L=86.91'			
60	316736.0830	355949.9670	STA. 43+49.04 PT, NOTHING SET
60 - 61 N89°44'31"E 105.00'			
61	316736.5557	356054.9656	STA. 44+54.03 SI, NOTHING SET
61 - 62 N89°44'31"E 95.97'			
62	316736.9878	356150.9301	STA. 45+50.00 POL, NOTHING SET

NANCY STREET ALIGNMENT TABLE			
POINT	NORTHING	EASTING	DESCRIPTION
63	316602.3492	354703.7002	STA. 50+00.00 POL, NOTHING SET
63 - 24 N00°06'53"W 100.00'			
24	316702.3490	354703.4998	STA. 51+00.00 SI, FND. REBAR BENT
24 - 52 N00°06'53"W 279.49'			
52	316981.8424	354702.9397	STA. 53+79.49 SI, NOTHING SET
52 - 64 N00°06'53"W 220.51'			
64	317202.3480	354702.4979	STA. 56+00.00 POL, NOTHING SET

- ALIGNMENT ABBREVIATIONS**
- PC POINT OF CURVATURE (BEGIN CURVE)
  - PI POINT OF INTERSECT (ANGLE POINT)
  - POL POINT ON LINE
  - PRC POINT OF REVERSE CURVATURE
  - PT POINT OF TANGENCY (END CURVE)
  - SI STREET INTERSECTION

- LEGEND**
- ⊙ FOUND REBAR WITH ALUMINUM OR PLASTIC CAP
  - FOUND REBAR
  - COMPUTED POINT - NOTHING SET
  - ⑫ SURVEY CONTROL POINT NUMBER, SEE COORDINATE TABLES
  - BASELINE/ROW CENTERLINE, SEE NOTE 8
  - PROPERTY LINE
  - - - EASEMENT LINE

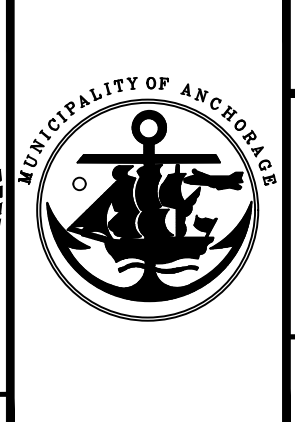
PETERSBURG ALIGNMENT TABLE			
POINT	NORTHING	EASTING	DESCRIPTION
65	316304.2215	355365.2335	STA. 60+00.00 POL, NOTHING SET
65 - 5 N00°12'18"W 100.00'			
5	316404.2209	355364.8756	STA. 61+00.00 SI, FND. REBAR
5 - 57 N00°12'18"W 304.22'			
57	316708.4422	355363.7868	STA. 64+04.22, POL, NOTHING SET
57 - 9 N00°12'18"W 305.60'			
9	317014.0374	355362.6930	STA. 67+09.82 SI, FND. ALUM. CAP
9 - 2 N00°14'00"W 340.41'			
2	317354.4462	355361.3064	STA. 70+50.23 SI, FND. ALUM. CAP

MONUMENT TABLE				
POINT	NORTHING	EASTING	DESCRIPTION	
3	316985.3690	355624.4009	FND. REBAR MONUMENT	
13	317010.4932	354102.6209	FND. ALUM. CAP MONUMENT	
14	316949.9036	354103.0769	FND. REBAR MONUMENT	
15	317010.7220	354372.3057	FND. REBAR MONUMENT	
16	317011.4084	354542.8425	FND. PLASTIC CAP MONUMENT	
17	317011.6993	354652.8720	FND. PLASTIC CAP MONUMENT	
18	317031.6267	354672.8399	FND. PLASTIC CAP MONUMENT	
19	317014.5610	355222.4878	FND. PLASTIC CAP MONUMENT	
20	316867.0866	354672.8212	FND. REBAR MONUMENT	
21	316842.4661	354733.1339	FND. REBAR MONUMENT	
23	316655.1559	354687.3826	FND. REBAR MONUMENT	
25	316732.3473	354753.4550	FND. REBAR MONUMENT	
26	316733.3888	355033.6687	FND. REBAR MONUMENT	
27	316738.5306	355393.4283	FND. REBAR MONUMENT	
29	316673.3191	355016.6938	FND. REBAR MONUMENT	
31	316559.4360	355394.3234	FND. REBAR MONUMENT	
32	316738.9278	355469.8586	FND. REBAR MONUMENT	
33	316739.7111	355625.0428	FND. REBAR MONUMENT	
34	316740.0684	355704.8036	FND. REBAR MONUMENT	
35	316706.3403	356024.6683	FND. ALUM. CAP MONUMENT	
37	316705.8237	355949.8274	FND. REBAR MONUMENT	
38	316695.0288	355874.1388	FND. REBAR MONUMENT	
39	316681.2364	355795.0977	FND. REBAR MONUMENT	
40	316679.4728	355555.1362	FND. REBAR MONUMENT	
41	316678.9828	355475.1602	FND. REBAR MONUMENT	
42	354672.5542	317010.8290	FND. PLASTIC CAP MONUMENT	

FIELD BOOKS	BM NO.	LOCATION	ELEV.	DATA	DRAWN BY	CHECKED BY	DATA	DRAWN BY	CHECKED BY	REV	DATE	DESCRIPTION	BY
DESIGN: MOA Book 3789, Pages 41-76	MOA 6	MOA 1988 Benchmark Book, D-59	172.01'	BASE	R&M		TELEPHONE	R&M					
MOA Book 3791, Pages 49-53	GAAB 20	MOA 1988 Benchmark Book, D-35	183.44'	TOPOGRAPHY	R&M		ELECTRIC	R&M					
STAKING:				PROFILE	R&M		CABLE TV	R&M					
ASBULT:				SANITARY SEWER	R&M		TRAFFIC SIGNAL	R&M					
CONTRACTOR:				STORM SEWER	R&M		DESIGN	R&M					
INSPECTOR:				WATER	R&M		QUANTITIES	R&M					
CONSTRUCTION RECORD				GAS	R&M		MUN. FINAL CHECK	R&M					

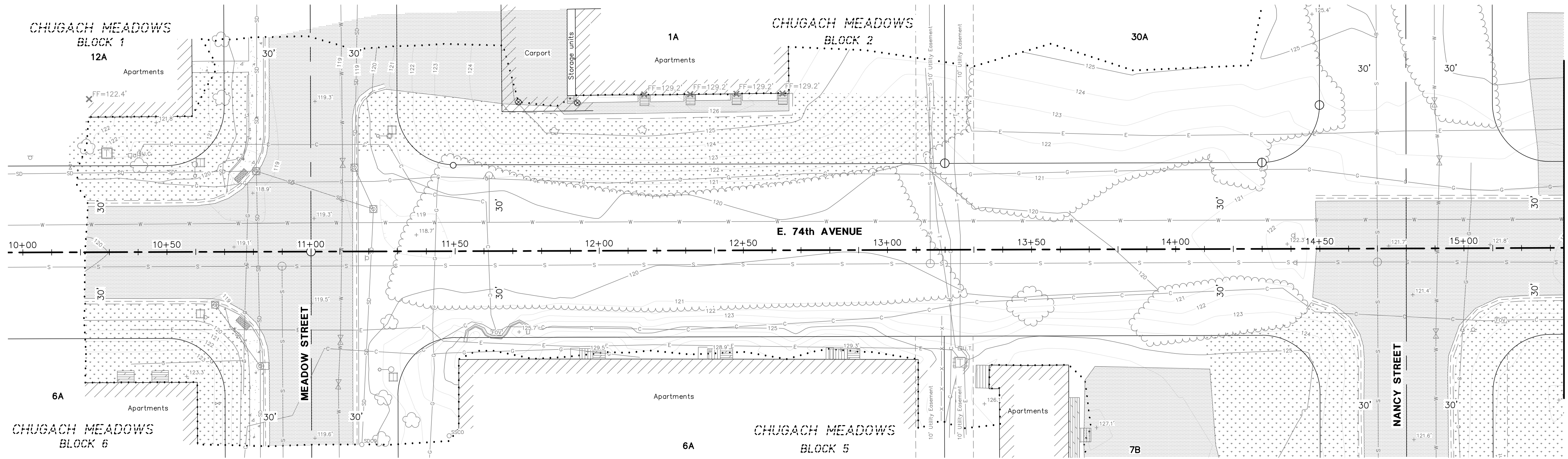
**R&M**  
AEC111  
9101 Vanguard Drive,  
Anchorage, Alaska, 99507  
PH (907) 522-1707  
www.rmconsult.com

STATE OF ALASKA  
49th  
Randal H. Brinker  
No. LS-8852  
REGISTERED PROFESSIONAL LAND SURVEYOR

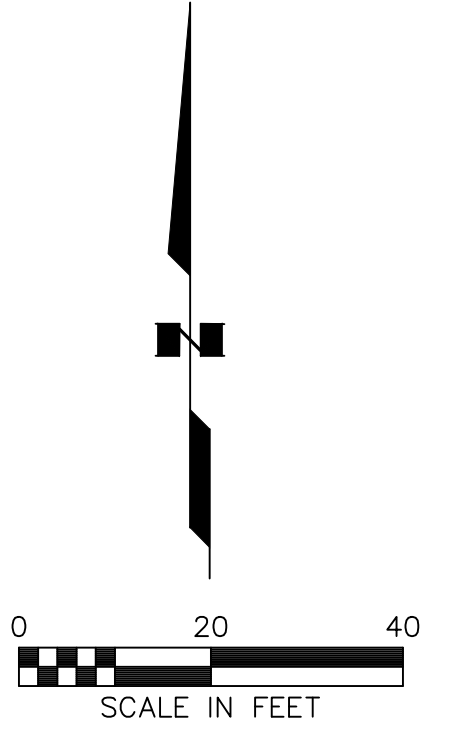
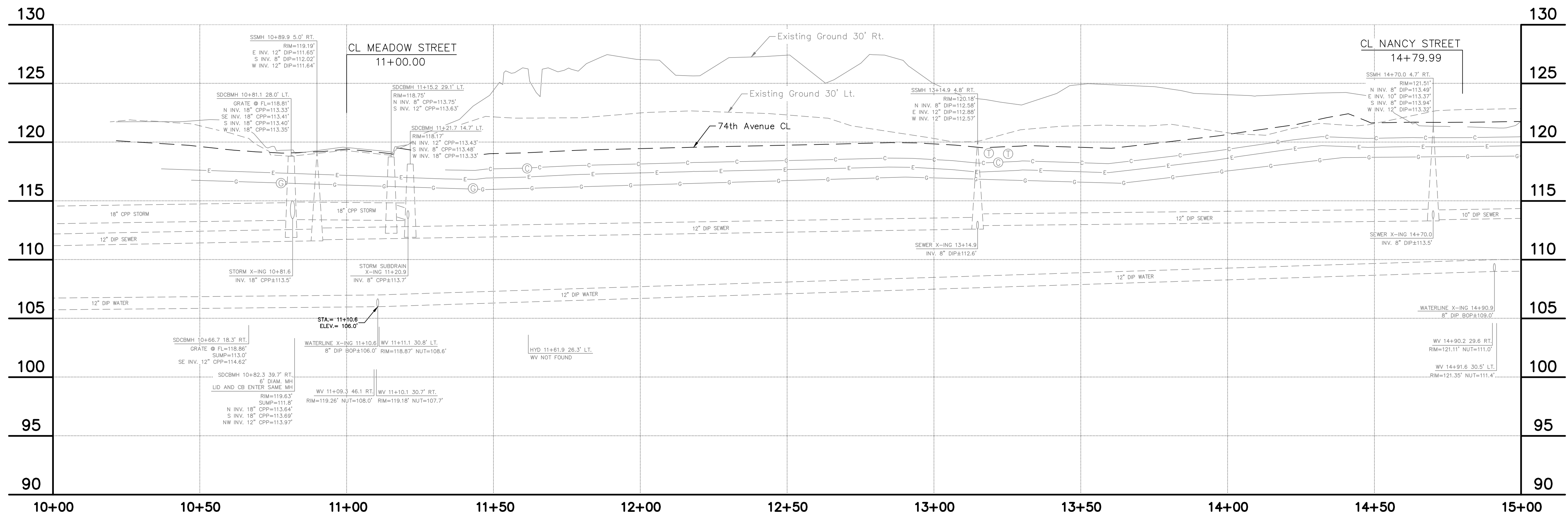


PROJECT MANAGEMENT AND ENGINEERING DEPARTMENT  
E. 74th/E. 75th/ NANCY ST. AREA RECONSTRUCTION PROJECT No. 21-02  
**CONTROL SURVEY**  
HORZ SCALE: 1"=100' DATE: Aug. 2021 GRID: SW2132/2133 SHEET 3 of 12  
VERT SCALE: N/A ACCT. NO.

FILE No. -



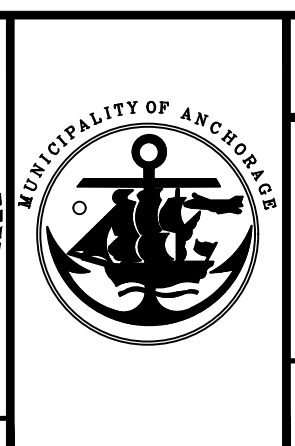
SEE SHEET 5



FIELD BOOKS	BM NO.	LOCATION	ELEV.	DATA	DRAWN BY	CHECKED BY	DATA	DRAWN BY	CHECKED BY	REV	DATE	DESCRIPTION	BY
DESIGN: MOA Book 3789, Pages 41-76	MOA 6	MOA 1988 Benchmark Book, D-59	172.01'	BASE	R&M		TELEPHONE	R&M					
MOA Book 3791, Pages 49-53	GAAB 20	MOA 1988 Benchmark Book, D-35	183.44'	TOPOGRAPHY	R&M		ELECTRIC	R&M					
STAKING:				PROFILE	R&M		CABLE TV						
ASBULT:				SANITARY SEWER	R&M		TRAFFIC SIGNAL						
CONTRACTOR:				STORM SEWER	R&M		DESIGN						
INSPECTOR:				WATER	R&M		QUANTITIES						
CONSTRUCTION RECORD				GAS	R&M		MUN. FINAL CHECK						

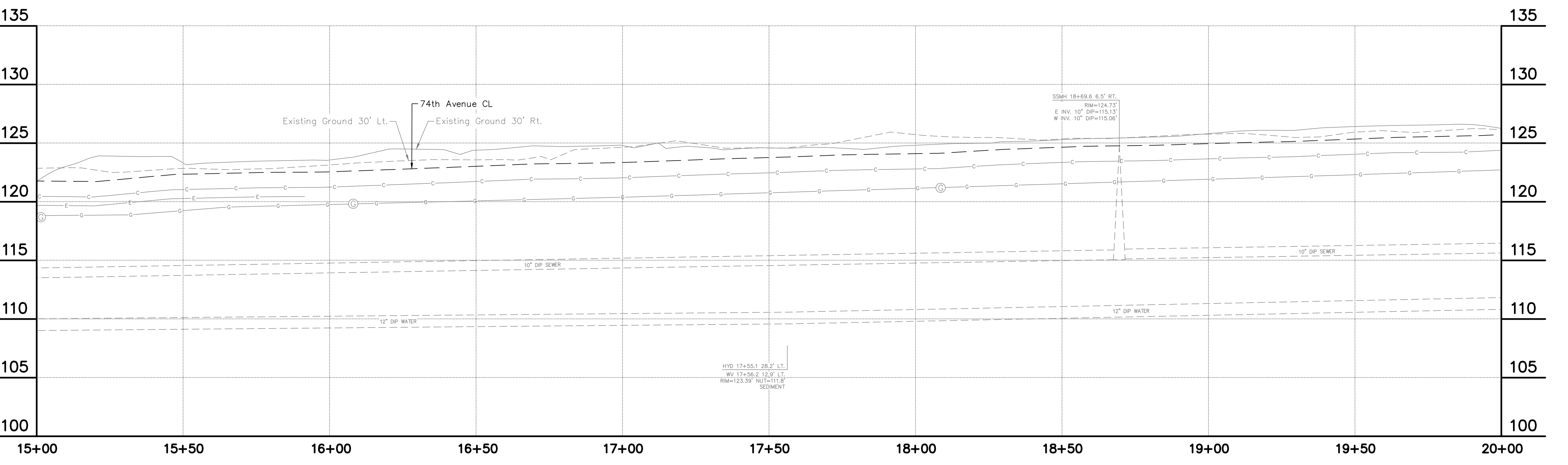
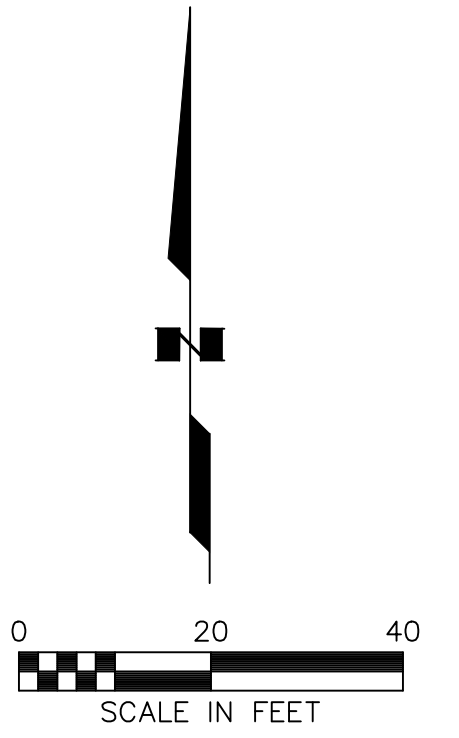
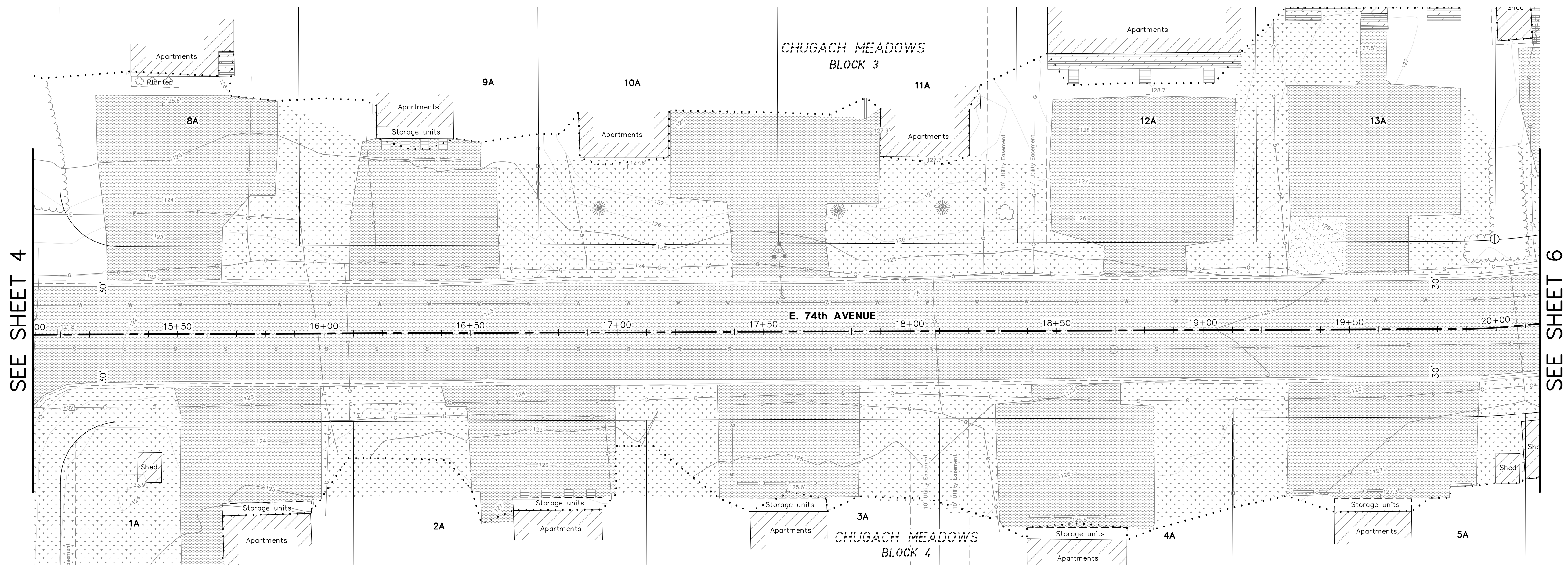
**R&M**  
AEC111  
9101 Vanguard Drive,  
Anchorage, Alaska, 99507  
PH (907) 522-1707  
www.rmconsult.com

STATE OF ALASKA  
49th  
RANDAL H. BRINKER  
No. LS-8852  
REGISTERED PROFESSIONAL LAND SURVEYOR



PROJECT MANAGEMENT AND ENGINEERING DEPARTMENT  
E. 74th/E. 75th/ NANCY ST. AREA RECONSTRUCTION PROJECT No. 21-02  
**TOPOGRAPHIC SURVEY**  
HORIZ SCALE: 1"=20' DATE: Aug. 2021 GRID: SW2132/2133 SHEET 4 of 12  
VERT SCALE: 1"=5' ACCT. NO.

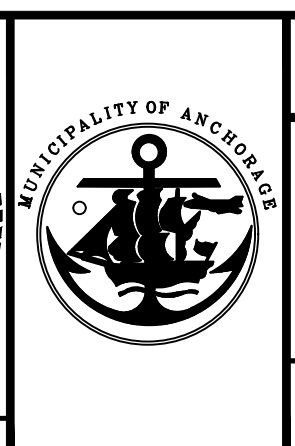
FILE No. -



FIELD BOOKS	BM NO.	LOCATION	ELEV.	DATA	DRAWN BY	CHECKED BY	DATA	DRAWN BY	CHECKED BY	REV	DATE	DESCRIPTION	BY
DESIGN: MOA Book 3789, Pages 41-76	MOA 6	MOA 1988 Benchmark Book, D-59	172.01'	BASE	R&M		TELEPHONE	R&M					
MOA Book 3791, Pages 49-53	GAAB 20	MOA 1988 Benchmark Book, D-35	183.44'	TOPOGRAPHY	R&M		ELECTRIC	R&M					
STAKING:				PROFILE	R&M		CABLE TV						
ASBUILT:				SANITARY SEWER	R&M		TRAFFIC SIGNAL						
CONTRACTOR:	BASIS OF DATUM: 1972 N.G.S. ADJUSTED DATUM			STORM SEWER	R&M		DESIGN						
INSPECTOR:				WATER	R&M		QUANTITIES						
CONSTRUCTION RECORD				GAS	R&M		MUN. FINAL CHECK						

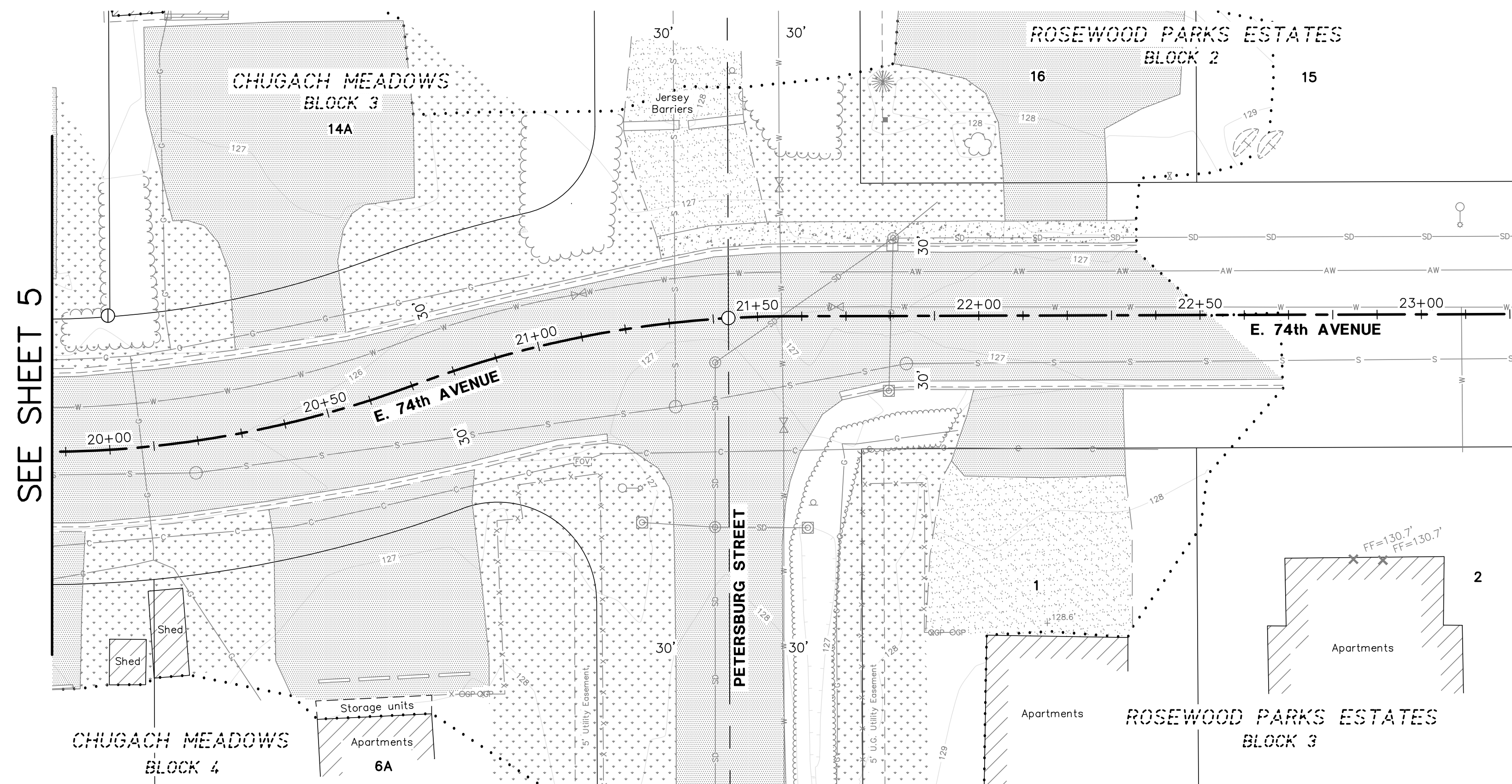
**R&M**  
AEECC111  
9101 Vanguard Drive,  
Anchorage, Alaska, 99507  
PH (907) 522-1707  
www.rmconsult.com

STATE OF ALASKA  
49th  
RANDAL H. BRINKER  
No. LS-8852  
REGISTERED PROFESSIONAL LAND SURVEYOR

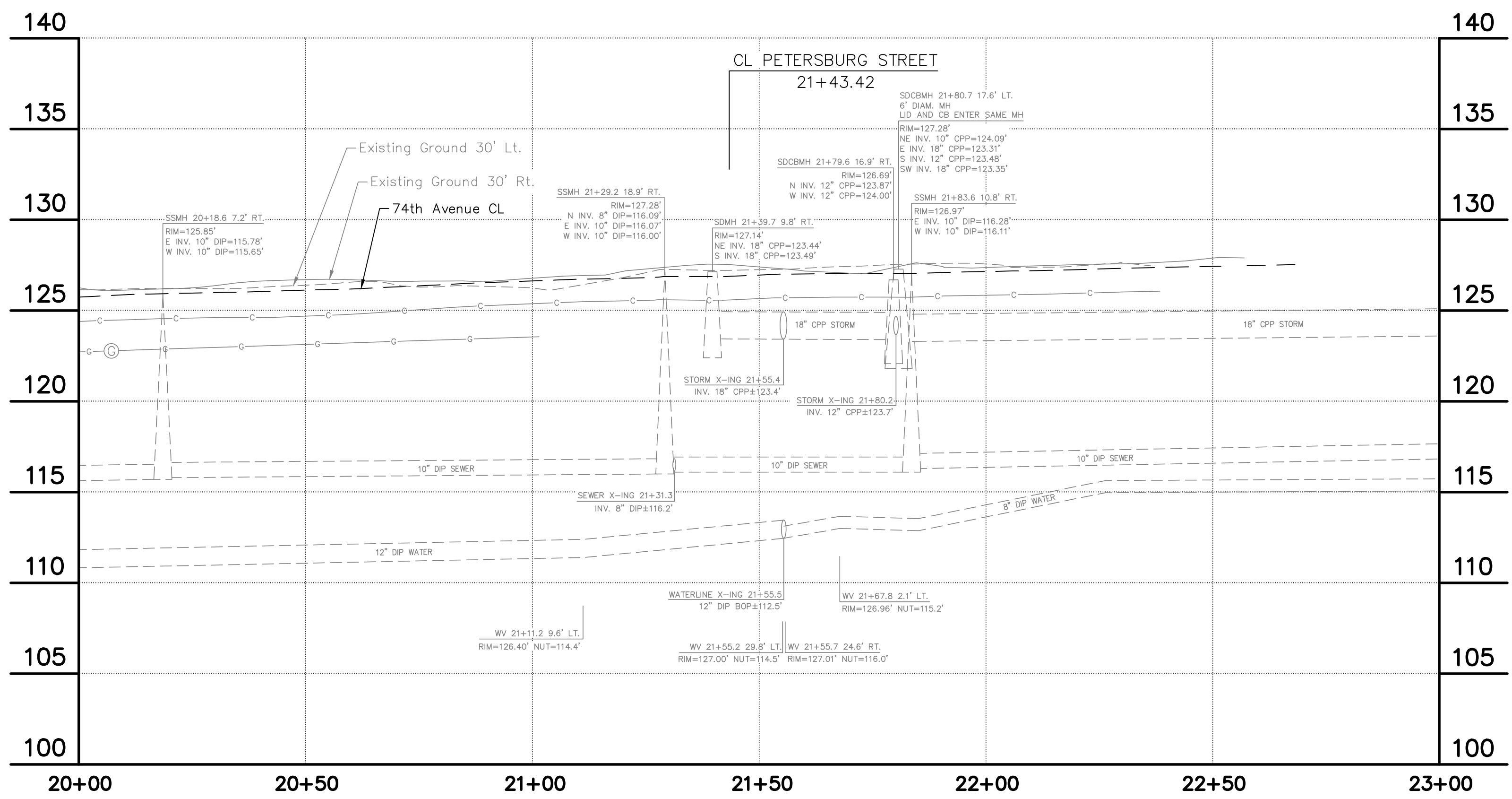
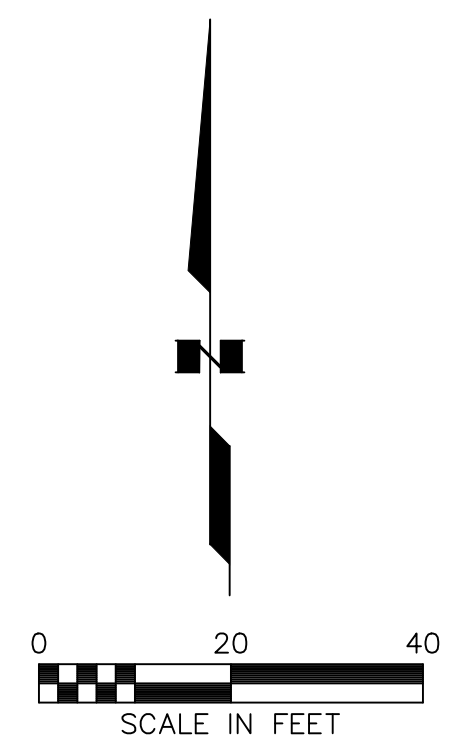


PROJECT MANAGEMENT AND ENGINEERING DEPARTMENT  
E. 74th/E. 75th/ NANCY ST. AREA RECONSTRUCTION PROJECT No. 21-02  
**TOPOGRAPHIC SURVEY**  
HORIZ SCALE: 1"=20' DATE: Aug. 2021 GRID SW2132/2133 SHEET 5 of 12  
VERT SCALE: 1"=5' ACCT. NO.

FILE No. -



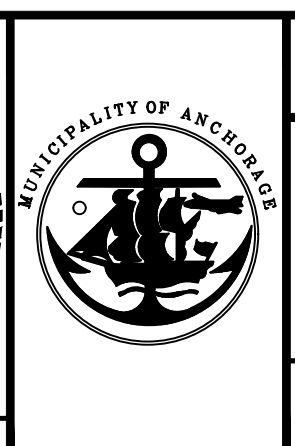
SEE SHEET 5



FIELD BOOKS	BM NO.	LOCATION	ELEV.	DATA	DRAWN BY	CHECKED BY	DATA	DRAWN BY	CHECKED BY	REV	DATE	DESCRIPTION	BY
DESIGN: MOA Book 3789, Pages 41-76	MOA 6	MOA 1988 Benchmark Book, D-59	172.01'	BASE	R&M		TELEPHONE	R&M					
MOA Book 3791, Pages 49-53	GAAB 20	MOA 1988 Benchmark Book, D-35	183.44'	TOPOGRAPHY	R&M		ELECTRIC	R&M					
STAKING:				PROFILE	R&M		CABLE TV	R&M					
ASBUILT:				SANITARY SEWER	R&M		TRAFFIC SIGNAL	R&M					
CONTRACTOR:	BASIS OF DATUM: 1972 N.G.S. ADJUSTED DATUM			STORM SEWER	R&M		DESIGN	R&M					
INSPECTOR:				WATER	R&M		QUANTITIES	R&M					
CONSTRUCTION RECORD		VERTICAL DATUM		GAS	R&M		MUN. FINAL CHECK	R&M					

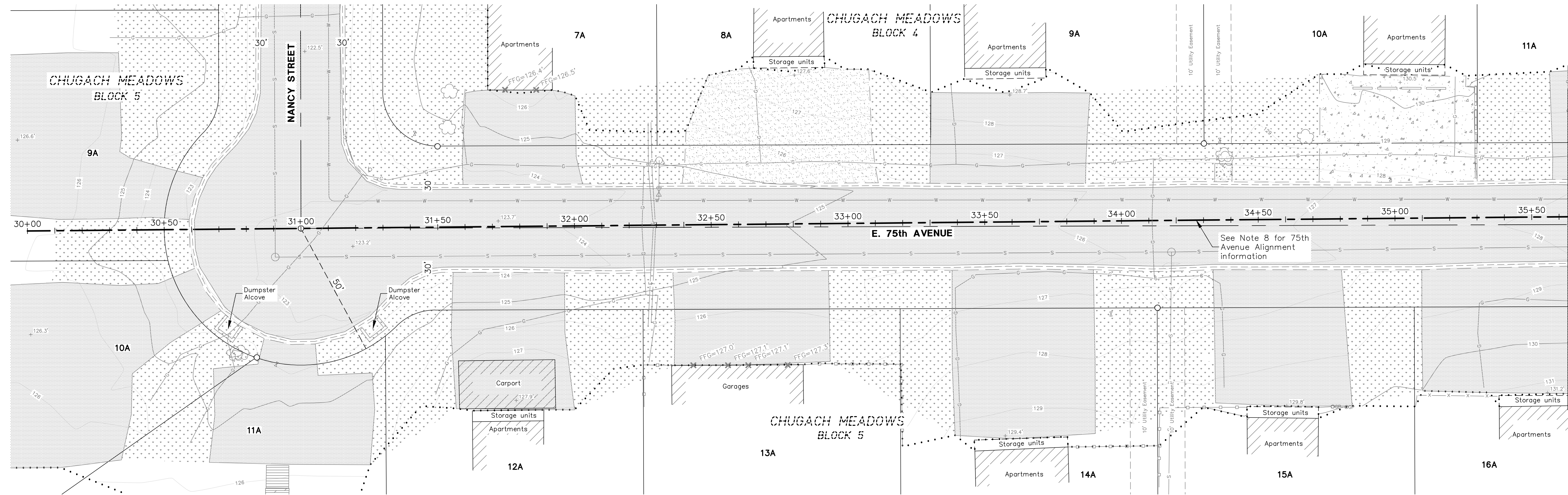
**R&M**  
AEC111  
9101 Vanguard Drive,  
Anchorage, Alaska, 99507  
PH (907) 522-1707  
www.rmconsult.com

STATE OF ALASKA  
49th  
RANAL H. BRINKER  
No. LS-8852  
REGISTERED PROFESSIONAL LAND SURVEYOR

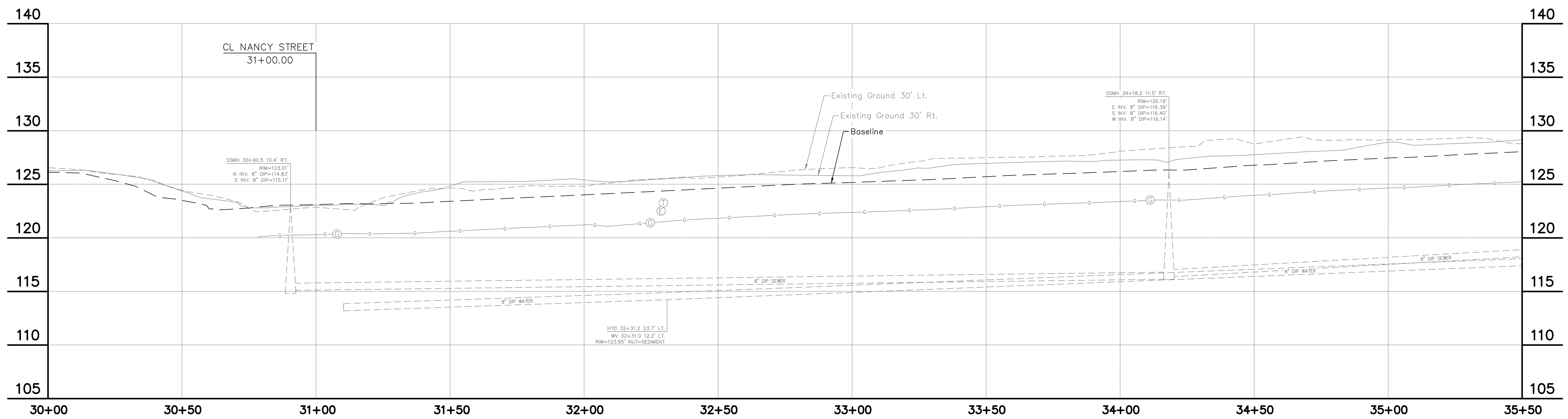
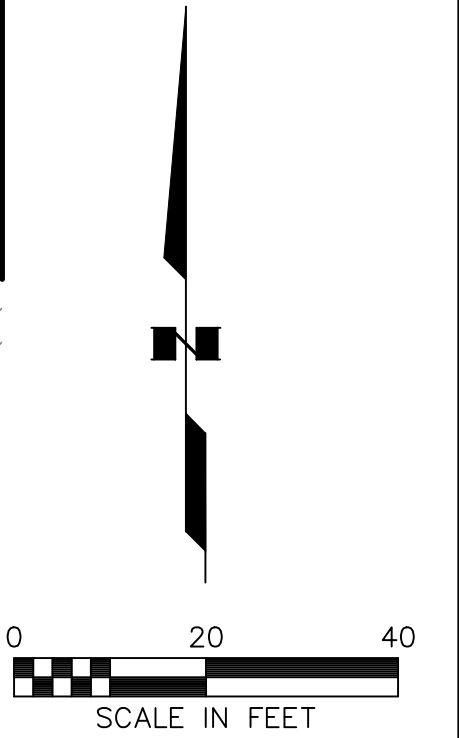


PROJECT MANAGEMENT AND ENGINEERING DEPARTMENT  
E. 74th/E. 75th/ NANCY ST. AREA RECONSTRUCTION PROJECT No. 21-02  
**TOPOGRAPHIC SURVEY**  
HORIZ SCALE: 1"=20' DATE: Aug. 2021 GRID: SW2132/2133 SHEET 6 of 12  
VERT SCALE: 1"=5' ACCT. NO.

FILE No. -



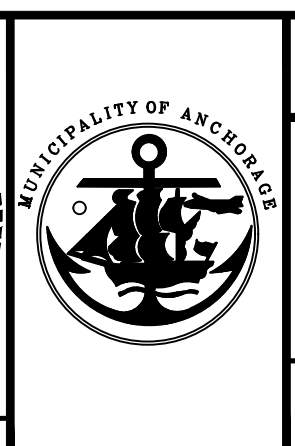
SEE SHEET 8



FIELD BOOKS	BM NO.	LOCATION	ELEV.	DATA	DRAWN BY	CHECKED BY	DATA	DRAWN BY	CHECKED BY	REV	DATE	DESCRIPTION	BY
DESIGN: MOA Book 3789, Pages 41-76	MOA 6	MOA 1988 Benchmark Book, D-59	172.01'	BASE	R&M		TELEPHONE	R&M					
MOA Book 3791, Pages 49-53	GAAB 20	MOA 1988 Benchmark Book, D-35	183.44'	TOPOGRAPHY	R&M		ELECTRIC	R&M					
STAKING:				PROFILE	R&M		CABLE TV	R&M					
ASBUILT:				SANITARY SEWER	R&M		TRAFFIC SIGNAL	R&M					
CONTRACTOR:	BASIS OF DATUM: 1972 N.G.S. ADJUSTED DATUM			STORM SEWER	R&M		DESIGN	R&M					
INSPECTOR:				WATER	R&M		QUANTITIES	R&M					
CONSTRUCTION RECORD				GAS	R&M		MUN. FINAL CHECK	R&M					

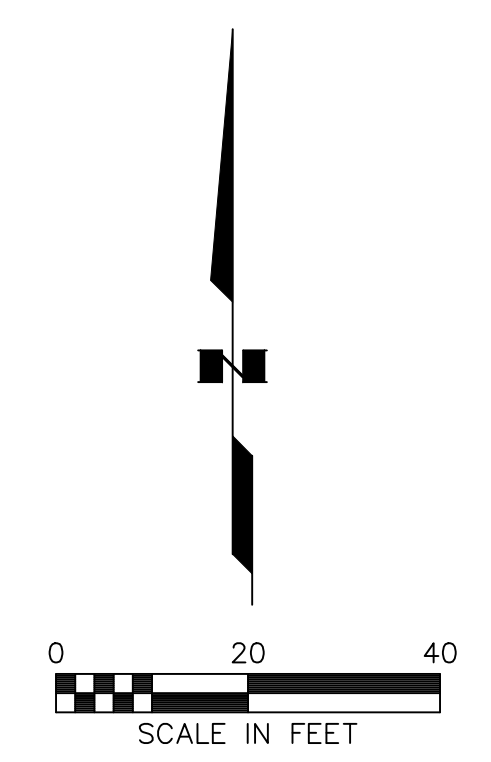
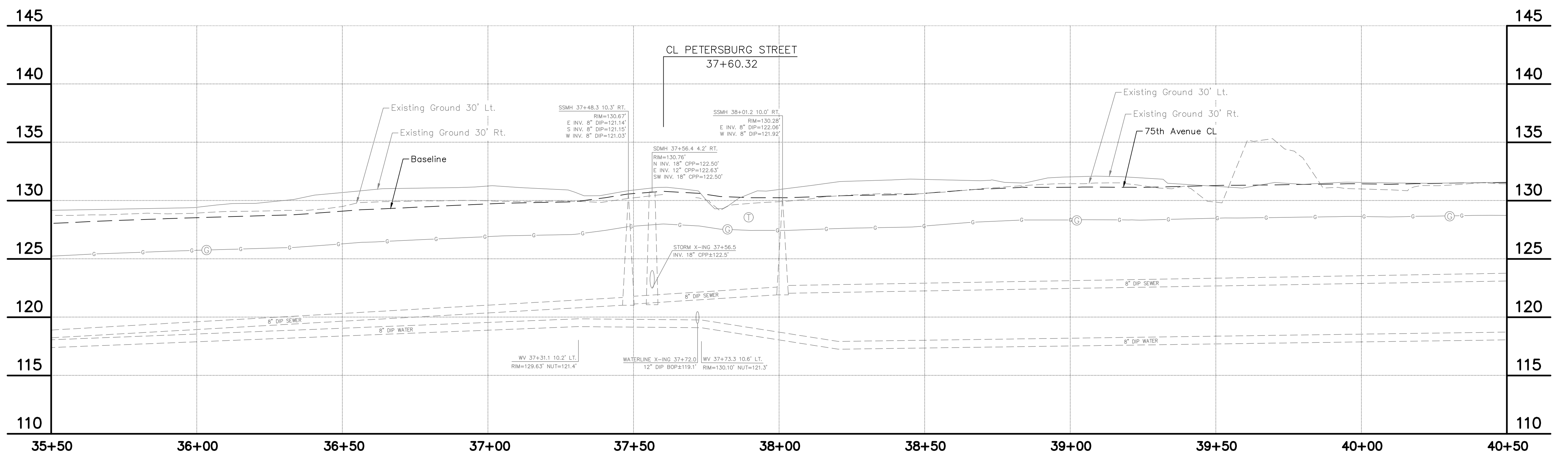
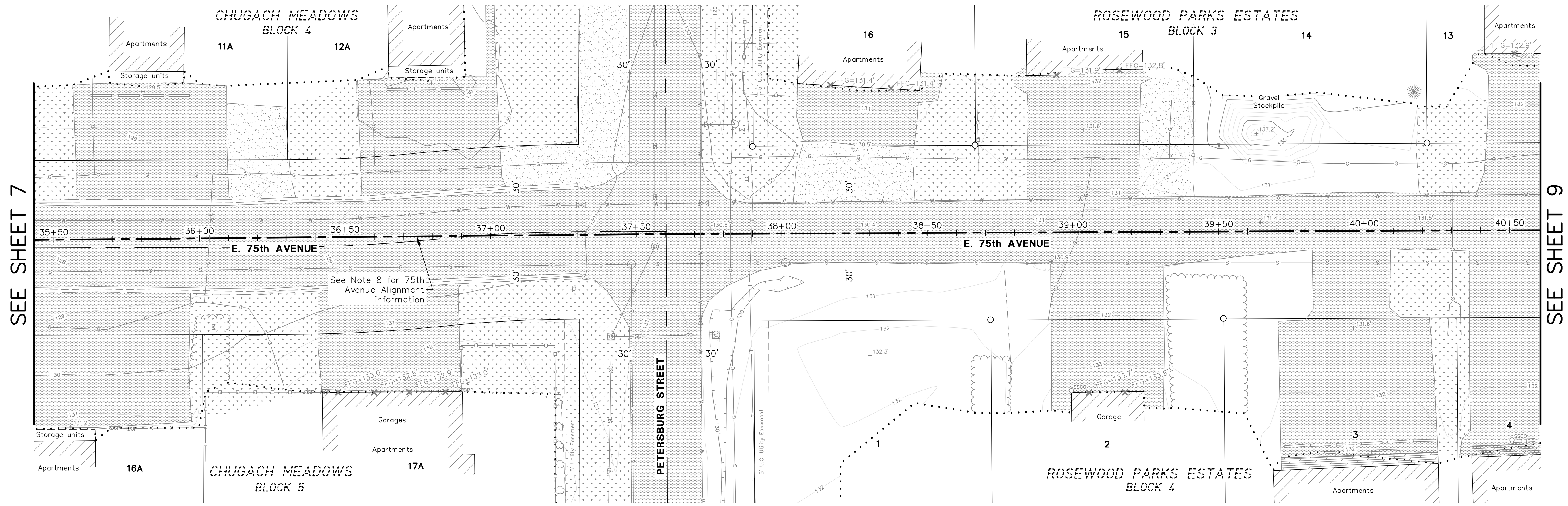
**R&M**  
AECC111  
9101 Vanguard Drive,  
Anchorage, Alaska, 99507  
PH (907) 522-1707  
www.rmconsult.com

STATE OF ALASKA  
49th  
RANDAL H. BRINKER  
No. LS-8852  
REGISTERED PROFESSIONAL LAND SURVEYOR



PROJECT MANAGEMENT AND ENGINEERING DEPARTMENT  
E. 74th/E. 75th/ NANCY ST. AREA RECONSTRUCTION PROJECT No. 21-02  
**TOPOGRAPHIC SURVEY**  
HORZ SCALE: 1"=20' DATE: Aug. 2021 GRID SW2132/2133 SHEET 7 of 12  
VERT SCALE: 1"=5' ACCT. NO.

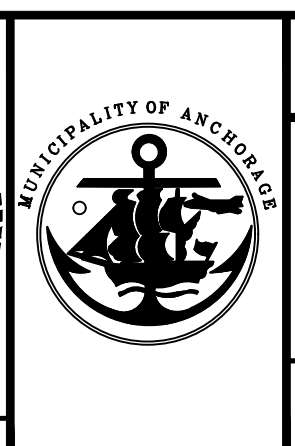
FILE No. -



FIELD BOOKS	BM NO.	LOCATION	ELEV.	DATA	DRAWN BY	CHECKED BY	DATA	DRAWN BY	CHECKED BY	REV	DATE	DESCRIPTION	BY
DESIGN: MOA Book 3789, Pages 41-76	MOA 6	MOA 1988 Benchmark Book, D-59	172.01'	BASE	R&M		TELEPHONE	R&M					
MOA Book 3791, Pages 49-53	GAAB 20	MOA 1988 Benchmark Book, D-35	183.44'	TOPOGRAPHY	R&M		ELECTRIC	R&M					
STAKING:				PROFILE	R&M		CABLE TV	R&M					
ASBUILT:				SANITARY SEWER	R&M		TRAFFIC SIGNAL	R&M					
CONTRACTOR:	BASIS OF DATUM: 1972 N.G.S. ADJUSTED DATUM			STORM SEWER	R&M		DESIGN	R&M					
INSPECTOR:				WATER	R&M		QUANTITIES	R&M					
CONSTRUCTION RECORD		VERTICAL DATUM		GAS	R&M		MUN. FINAL CHECK	R&M					

**R&M**  
AEC111  
9101 Vanguard Drive,  
Anchorage, Alaska, 99507  
PH (907) 522-1707  
www.rmconsult.com

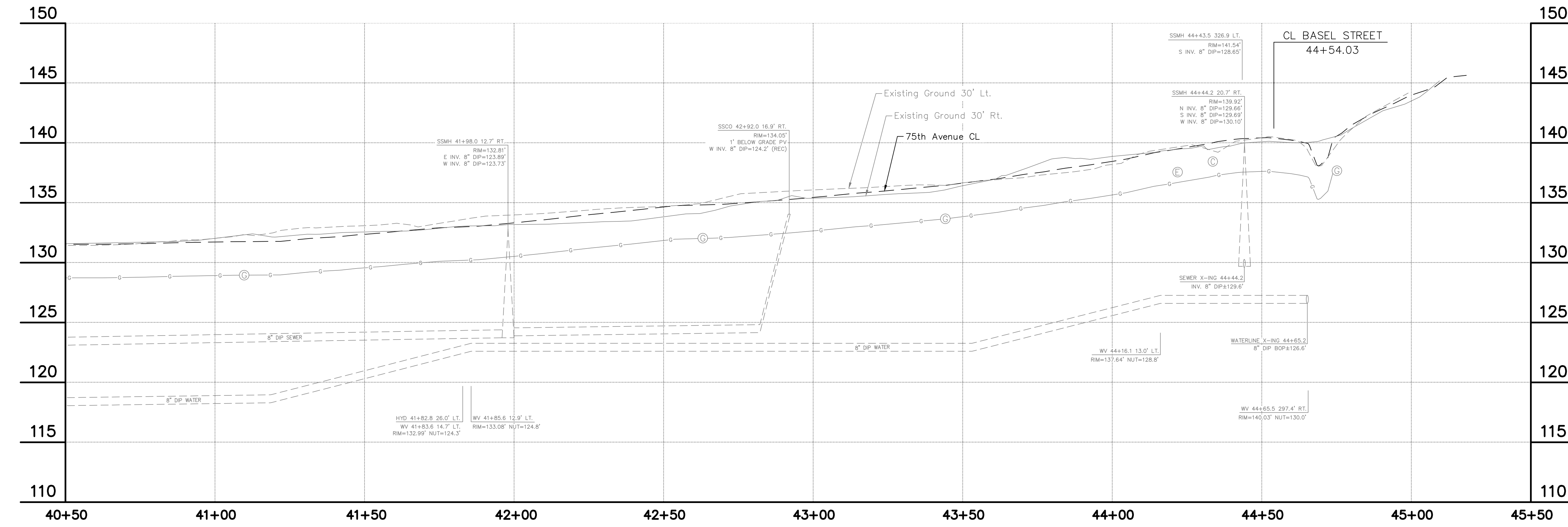
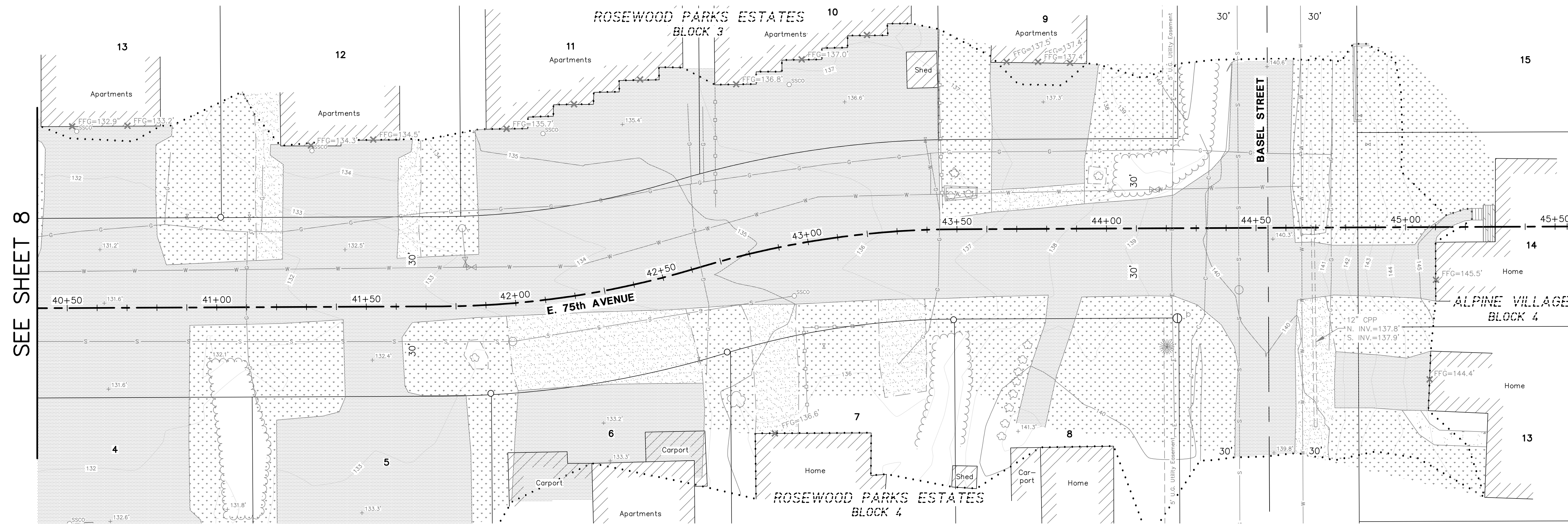
STATE OF ALASKA  
49th  
Randal H. Brinker  
No. LS-8852  
REGISTERED PROFESSIONAL LAND SURVEYOR



PROJECT MANAGEMENT AND ENGINEERING DEPARTMENT  
E. 74th/E. 75th/ NANCY ST. AREA RECONSTRUCTION PROJECT No. 21-02  
**TOPOGRAPHIC SURVEY**  
HORZ SCALE: 1"=20' DATE: Aug. 2021 GRID SW2132/2133 SHEET 8 of 12  
VERT SCALE: 1"=5' ACCT. NO.

FILE No. -





FIELD BOOKS	BM NO.	LOCATION	ELEV.	DATA	DRAWN BY	CHECKED BY	DATA	DRAWN BY	CHECKED BY	REV	DATE	DESCRIPTION	BY
DESIGN: MOA Book 3789, Pages 41-76	MOA 6	MOA 1988 Benchmark Book, D-59	172.01'	BASE	R&M		TELEPHONE	R&M					
MOA Book 3791, Pages 49-53	GAAB 20	MOA 1988 Benchmark Book, D-35	183.44'	TOPOGRAPHY	R&M		ELECTRIC	R&M					
STAKING:				PROFILE	R&M		CABLE TV	R&M					
ASBUILT:				SANITARY SEWER	R&M		TRAFFIC SIGNAL	R&M					
CONTRACTOR:	BASIS OF DATUM: 1972 N.G.S. ADJUSTED DATUM			STORM SEWER	R&M		DESIGN	R&M					
INSPECTOR:				WATER	R&M		QUANTITIES	R&M					
CONSTRUCTION RECORD		VERTICAL DATUM		GAS	R&M		MUN. FINAL CHECK	R&M					

PROJECT MANAGEMENT AND ENGINEERING DEPARTMENT

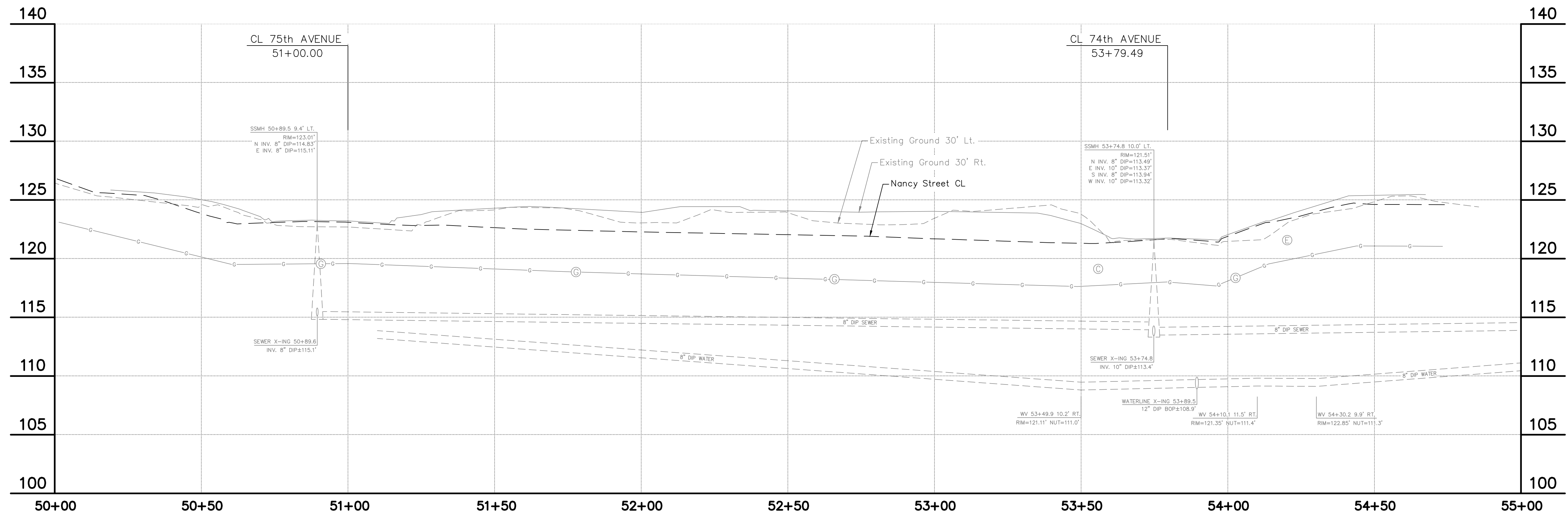
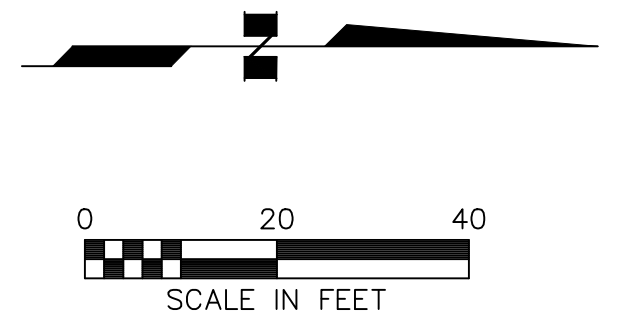
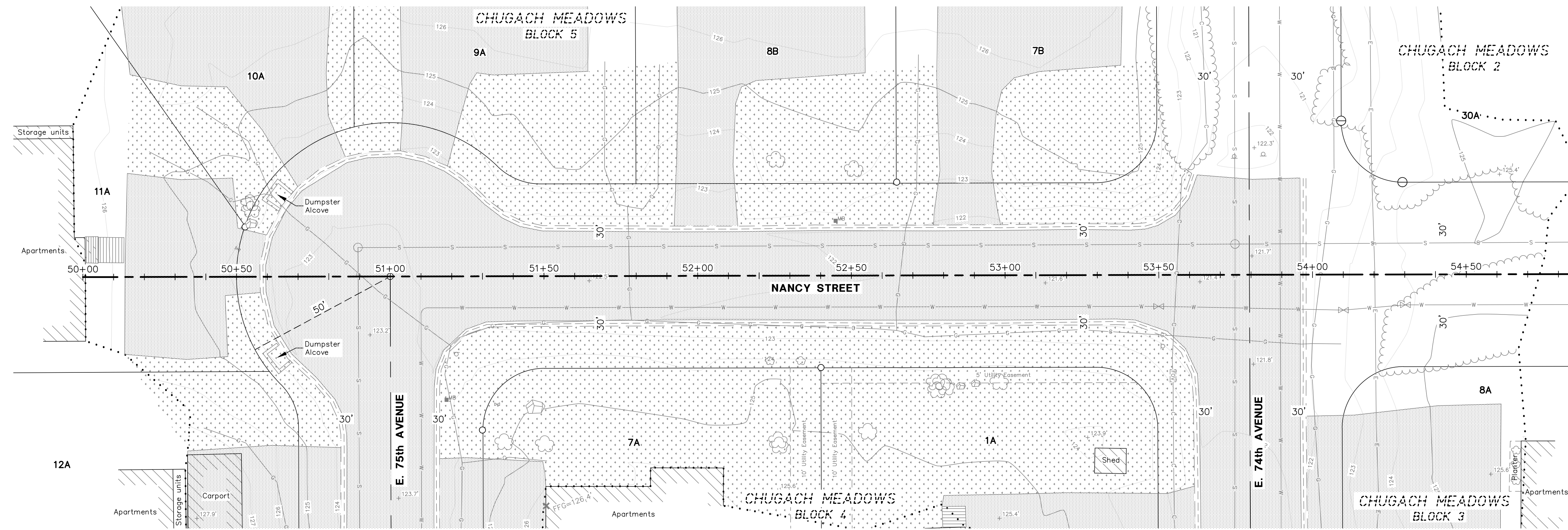
E. 74th/E. 75th/ NANCY ST. AREA RECONSTRUCTION PROJECT No. 21-02

**TOPOGRAPHIC SURVEY**

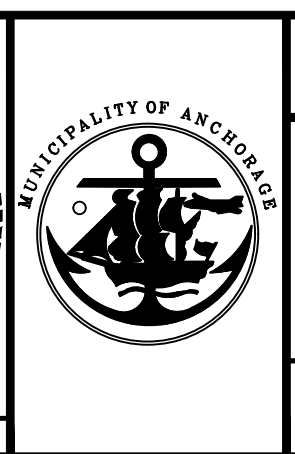
HORZ SCALE: 1"=20' DATE: Aug. 2021 GRID: SW2132/2133 SHEET 9 of 12

VERT SCALE: 1"=5' ACCT. NO.

FILE No. -



FIELD BOOKS	BM NO.	LOCATION	ELEV.	DATA	DRAWN BY	CHECKED BY	DATA	DRAWN BY	CHECKED BY	REV	DATE	DESCRIPTION	BY
DESIGN: MOA Book 3789, Pages 41-76	MOA 6	MOA 1988 Benchmark Book, D-59	172.01'	BASE	R&M		TELEPHONE	R&M					
MOA Book 3791, Pages 49-53	GAAB 20	MOA 1988 Benchmark Book, D-35	183.44'	TOPOGRAPHY	R&M		ELECTRIC	R&M					
STAKING:				PROFILE	R&M		CABLE TV						
ASBUILT:				SANITARY SEWER	R&M		TRAFFIC SIGNAL						
CONTRACTOR:				STORM SEWER	R&M		DESIGN						
INSPECTOR:				WATER	R&M		QUANTITIES						
CONSTRUCTION RECORD				GAS	R&M		MUN. FINAL CHECK						



**PROJECT MANAGEMENT AND ENGINEERING DEPARTMENT**

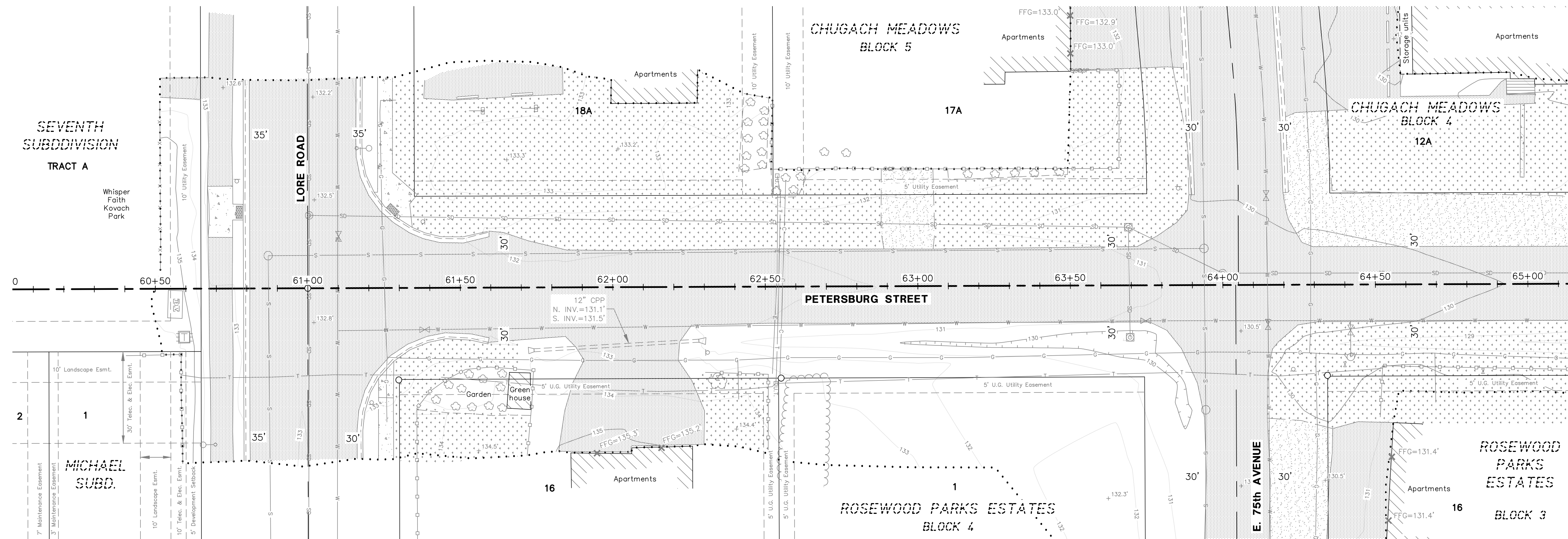
E. 74th/E. 75th/ NANCY ST. AREA RECONSTRUCTION PROJECT No. 21-02

**TOPOGRAPHIC SURVEY**

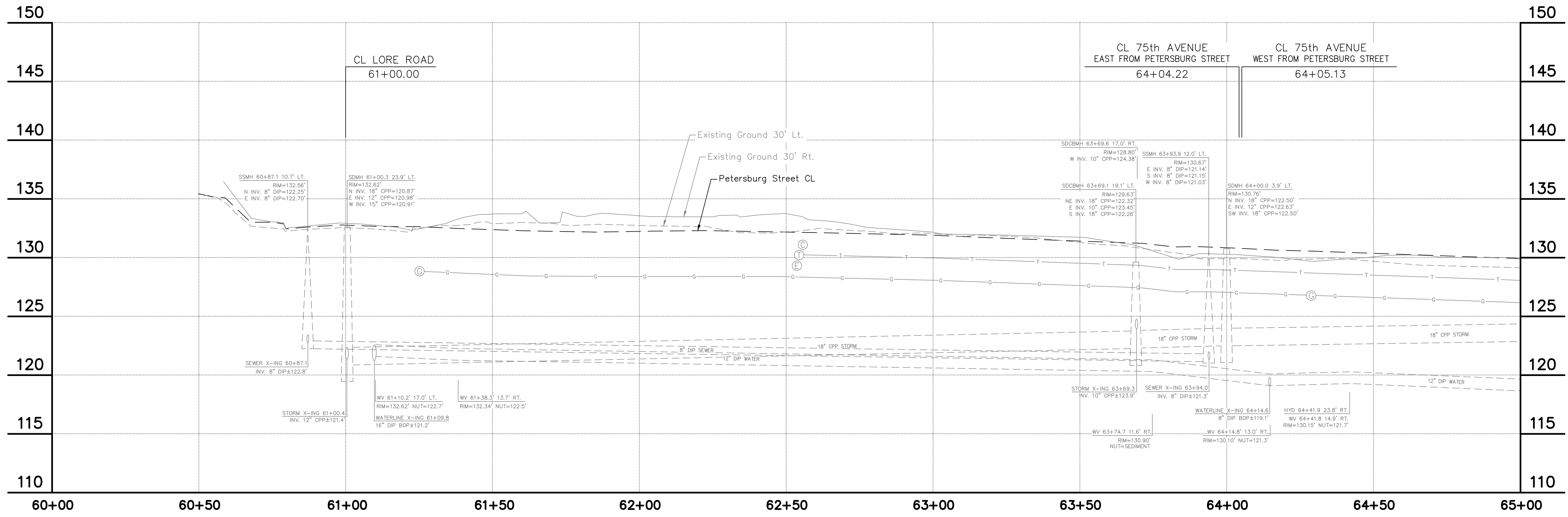
HORIZ SCALE: 1"=20' DATE: Aug. 2021 GRID: SW2132/2133 SHEET 10 of 12

VERT SCALE: 1"=5' ACCT. NO.

FILE No. --



SEE SHEET 12



FIELD BOOKS	BM NO.	LOCATION	ELEV.	DATA	DRAWN BY	CHECKED BY	DATA	DRAWN BY	CHECKED BY	REV	DATE	DESCRIPTION	BY
DESIGN: MOA Book 3789, Pages 41-76	MOA 6	MOA 1988 Benchmark Book, D-59	172.01'	BASE	R&M		TELEPHONE	R&M					
MOA Book 3791, Pages 49-53	GAAB 20	MOA 1988 Benchmark Book, D-35	183.44'	TOPOGRAPHY	R&M		ELECTRIC	R&M					
STAKING:				PROFILE	R&M		CABLE TV	R&M					
ASBULT:				SANITARY SEWER	R&M		TRAFFIC SIGNAL	R&M					
CONTRACTOR:				STORM SEWER	R&M		DESIGN	R&M					
INSPECTOR:				WATER	R&M		QUANTITIES	R&M					
CONSTRUCTION RECORD				GAS	R&M		MUN. FINAL CHECK	R&M					

9101 Vanguard Drive,  
Anchorage, Alaska, 99507  
PH (907) 522-1707  
www.rmconsult.com

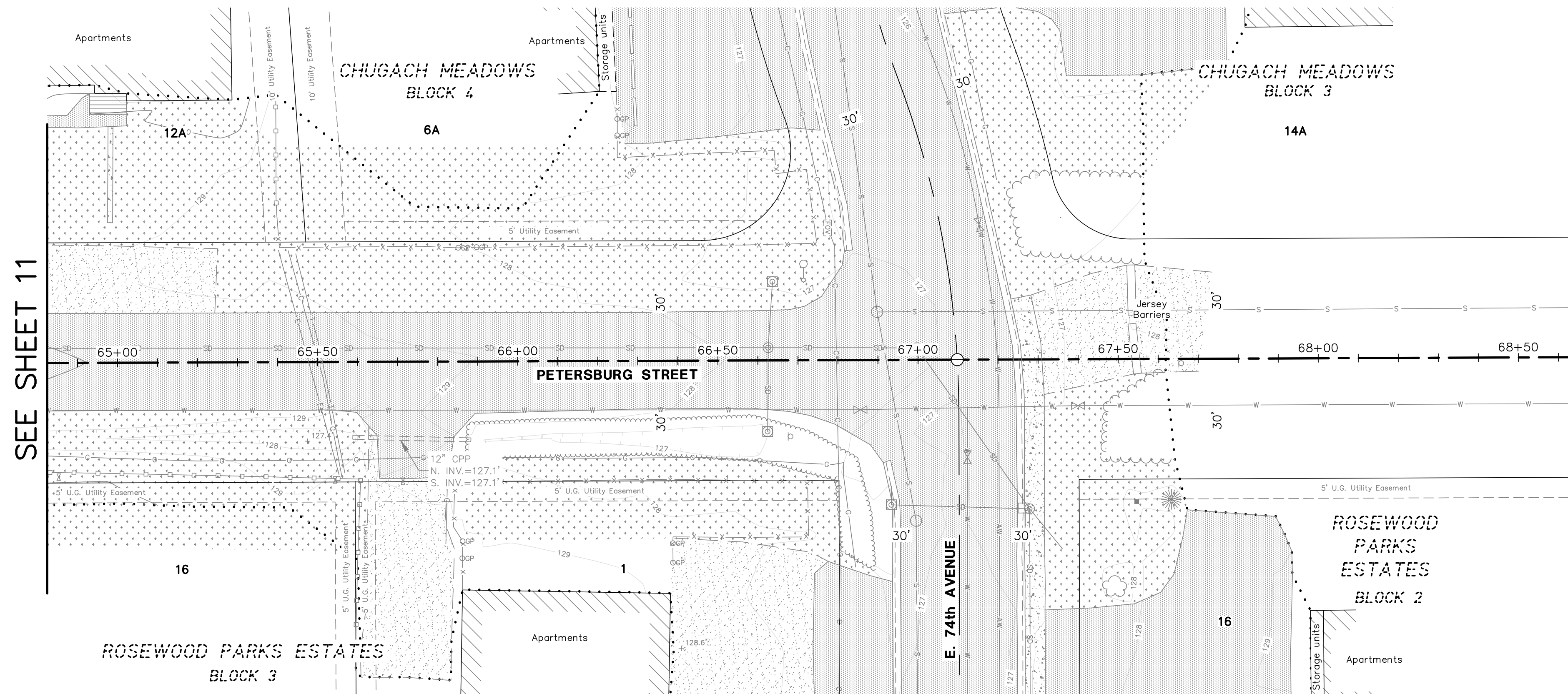
PROJECT MANAGEMENT AND ENGINEERING DEPARTMENT

E. 74th/E. 75th/ NANCY ST. AREA RECONSTRUCTION PROJECT No. 21-02

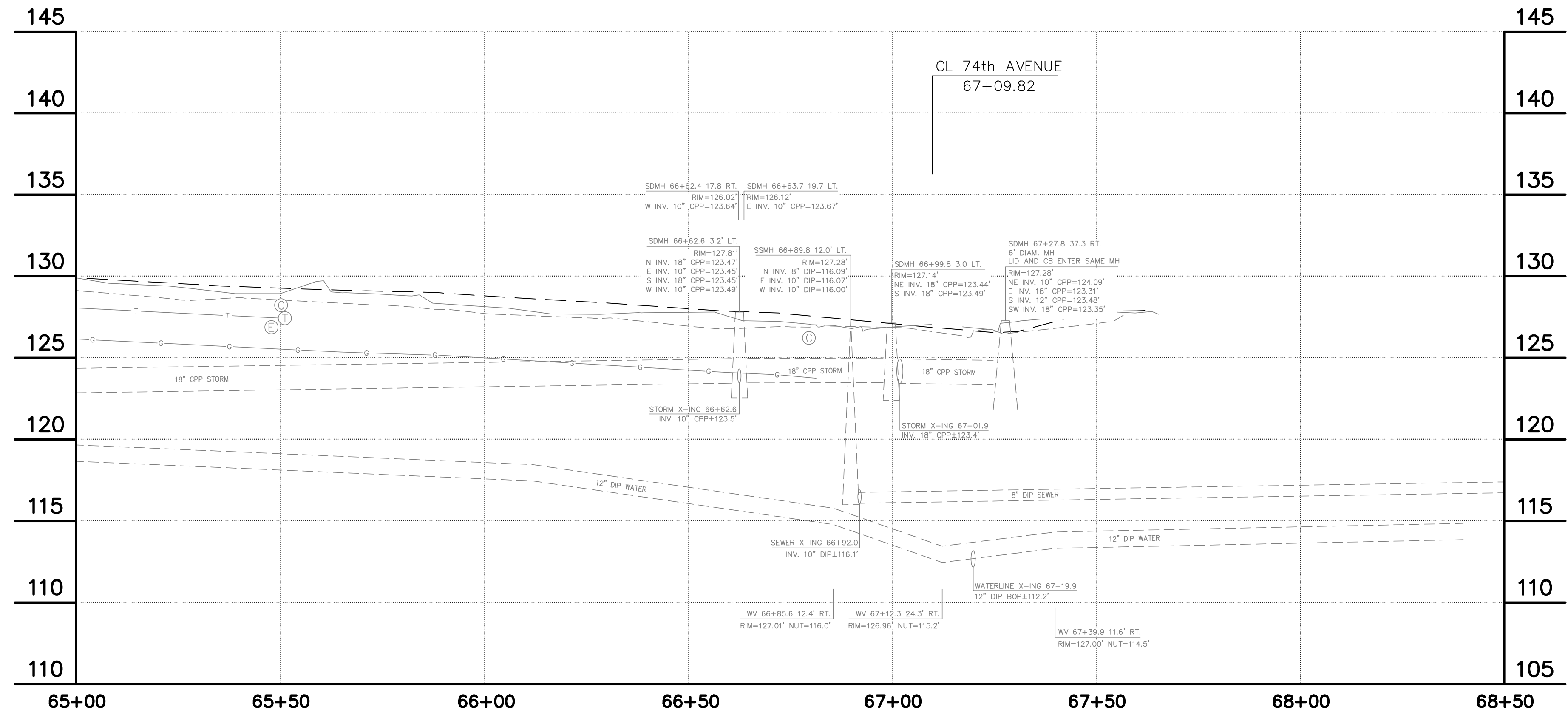
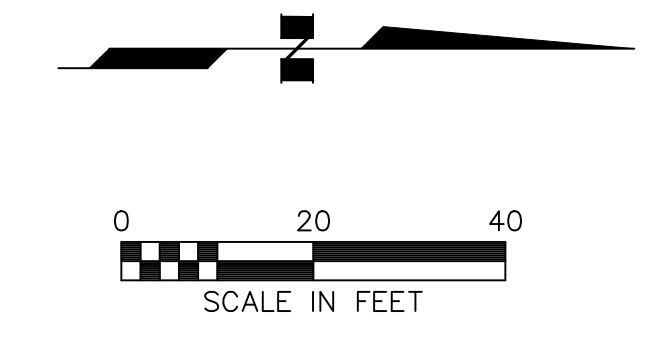
### TOPOGRAPHIC SURVEY

HORIZ SCALE: 1"=20' DATE: Aug. 2021 GRID: SW2132/2133 SHEET 11 of 12  
VERT SCALE: 1"=5' ACCT. NO.

FILE No. -



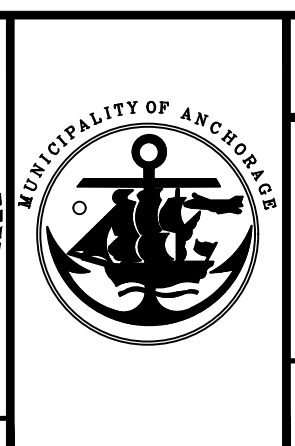
SEE SHEET 11



FIELD BOOKS	BM NO.	LOCATION	ELEV.	DATA	DRAWN BY	CHECKED BY	DATA	DRAWN BY	CHECKED BY	REV	DATE	DESCRIPTION	BY
DESIGN: MOA Book 3789, Pages 41-76	MOA 6	MOA 1988 Benchmark Book, D-59	172.01'	BASE	R&M		TELEPHONE	R&M					
MOA Book 3791, Pages 49-53	GAAB 20	MOA 1988 Benchmark Book, D-35	183.44'	TOPOGRAPHY	R&M		ELECTRIC	R&M					
STAKING:				PROFILE	R&M		CABLE TV						
ASBUILT:				SANITARY SEWER	R&M		TRAFFIC SIGNAL						
CONTRACTOR:	BASIS OF DATUM: 1972 N.G.S. ADJUSTED DATUM			STORM SEWER	R&M		DESIGN						
INSPECTOR:				WATER	R&M		QUANTITIES						
CONSTRUCTION RECORD		VERTICAL DATUM		GAS	R&M		MUN. FINAL CHECK						

**R&M**  
AECC111  
9101 Vanguard Drive,  
Anchorage, Alaska, 99507  
PH (907) 522-1707  
www.rmconsult.com

STATE OF ALASKA  
49th  
RANDAL H. BRINKER  
No. LS-8852  
REGISTERED PROFESSIONAL LAND SURVEYOR



PROJECT MANAGEMENT AND ENGINEERING DEPARTMENT  
E. 74th/E. 75th/ NANCY ST. AREA RECONSTRUCTION PROJECT No. 21-02  
**TOPOGRAPHIC SURVEY**  
HORZ SCALE: 1"=20' DATE: Aug. 2021 GRID SW2132/2133 SHEET 12 of 12  
VERT SCALE: 1"=5' ACCT. NO.

FILE No. --