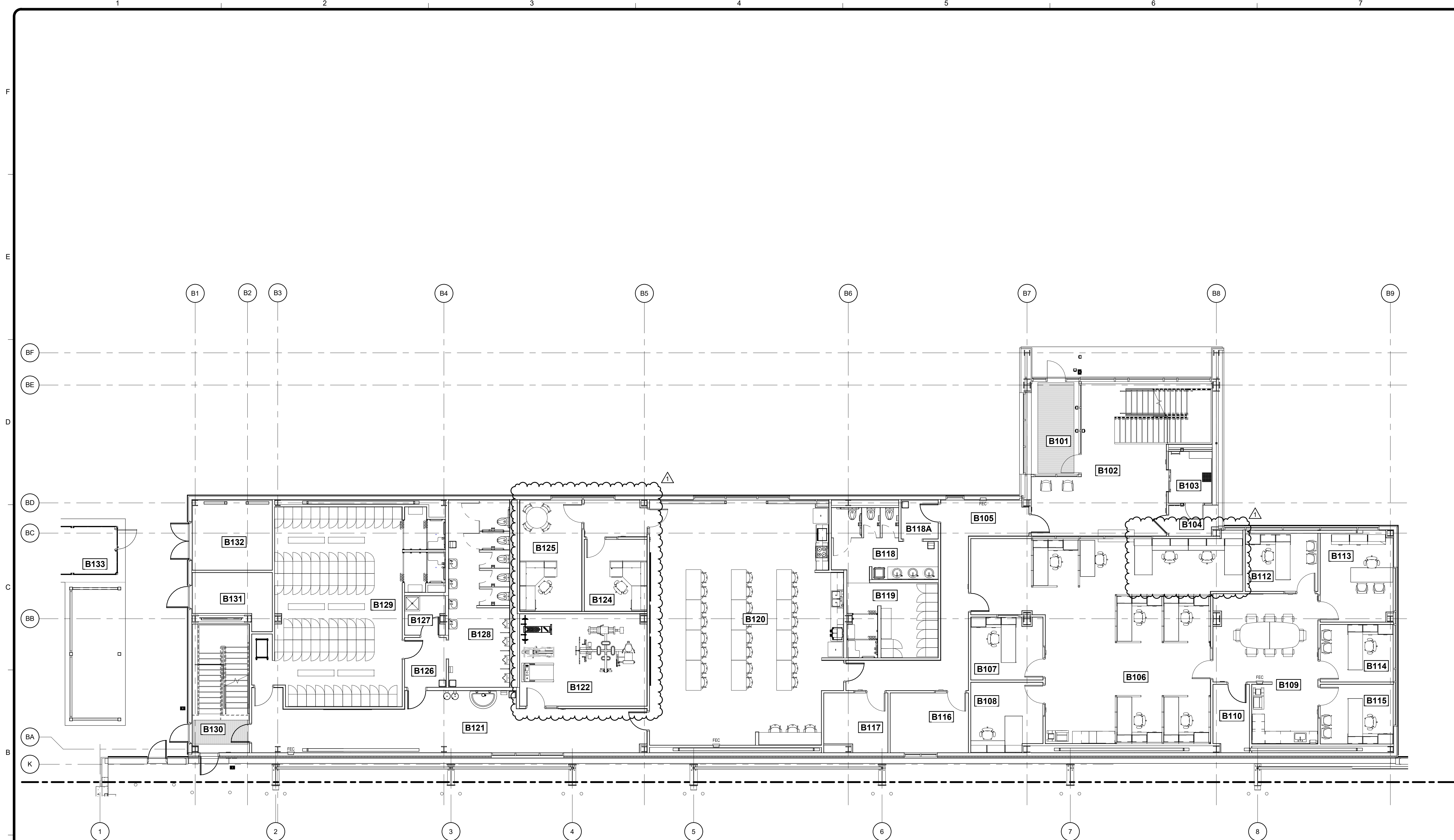


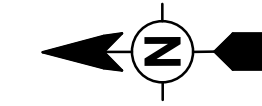
6/18/2021 1:17:27 PM BIM 360://200-93602-19002 Anchorage SVT/93602-CTS-A-2019.rvt



FIRST FLOOR FURNITURE PLAN

SCALE: 1/8" = 1'-0"

SEE ATTACHMENT 2 - FURNITURE SCHEDULE



SCALE: 1/8" = 1'-0"

Bar measures 1 inch, otherwise drawing is not to scale

AECL1177

TETRA TECH
3800 Centerpoint Drive
Suite 602
Anchorage, AK 99503
www.tetrattech.com

AECL848

DOWL
WWW.DOWL.COM
4041 B Street
Anchorage, Alaska 99503
907-562-2000

ASI-3

JUNE 22, 2021

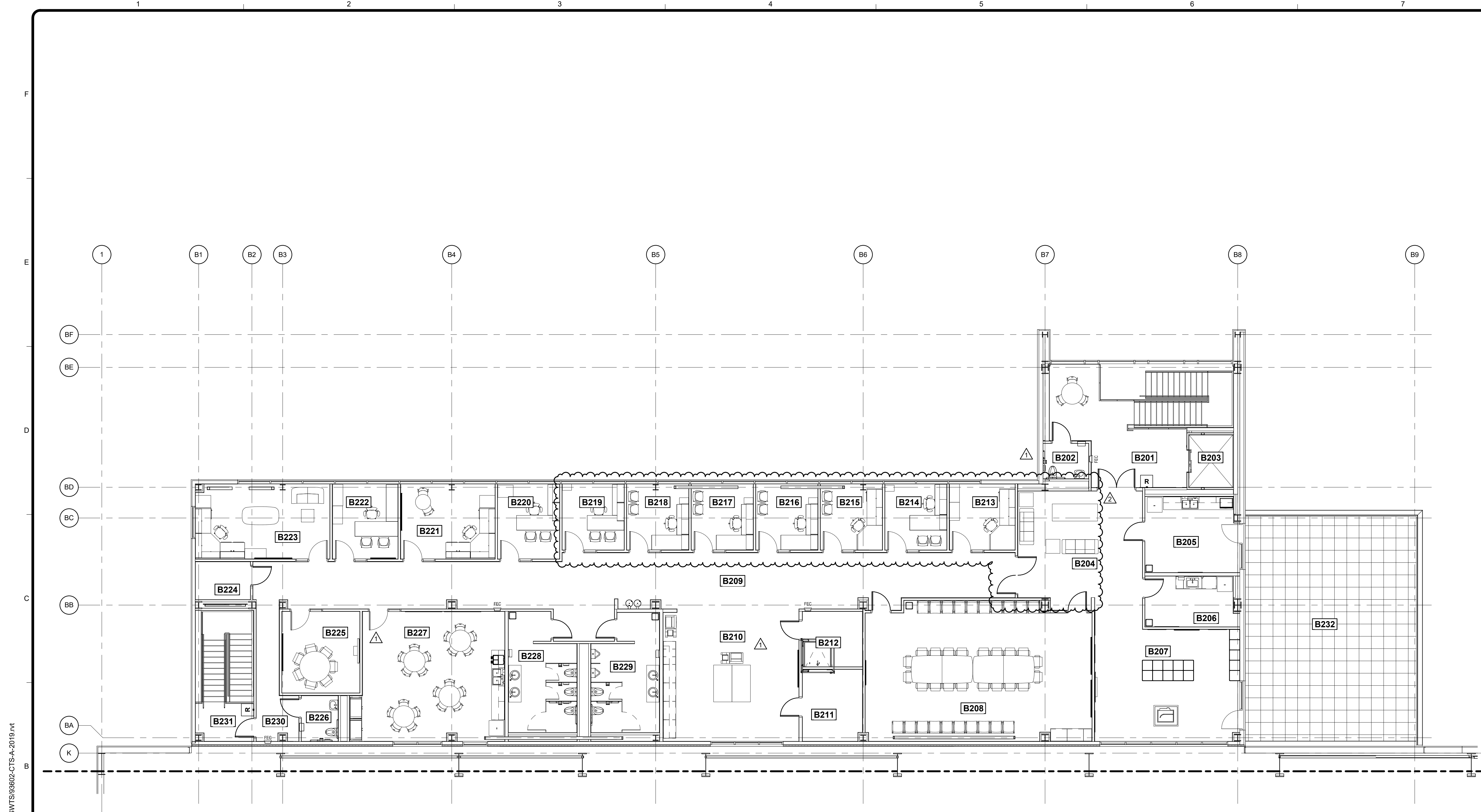
MARK	DATE	DESCRIPTION	BY
1	6/22/21	ASI-3	

MUNICIPALITY OF ANCHORAGE
SOLID WASTE SERVICES
ADMINISTRATION BUILDING
FIRST FLOOR FURNITURE PLAN

PROJ: 200-93602-19002
DESN: M. BODSKY
DRWN: T. HOURIGAN
CHKD: Q. BIAGI

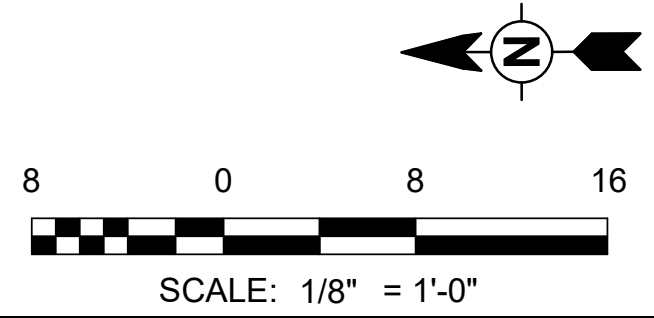
AB709

Copyright: Tetra Tech



SECOND FLOOR PLAN - AREA B
SCALE: 1/8" = 1'-0"

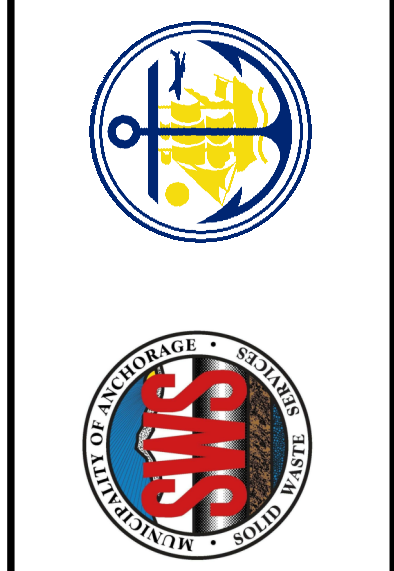
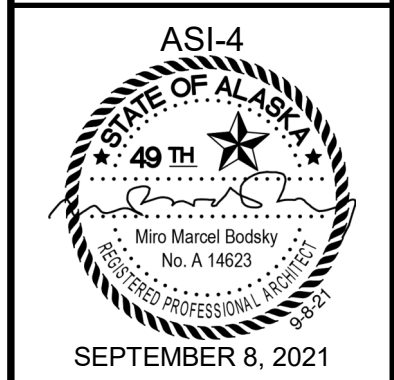
SEE ATTACHMENT 2 - FURNITURE SCHEDULE



9/3/2024 8:49:58 PM BIM 360://200-93602-19002 Anchorage SVT/93602-CTS-A-2019.rvt

AECL1177
TETRA TECH
3800 Centerpoint Drive
Anchorage, AK 99503
www.tetra-tech.com

AECL848
DOWL
WWW.DOWL.COM
4041 B Street
Anchorage, Alaska 99503
907-562-2000



MARK	DATE	DESCRIPTION
1	6/22/21	ASI-3
2	9/8/21	ASI-4

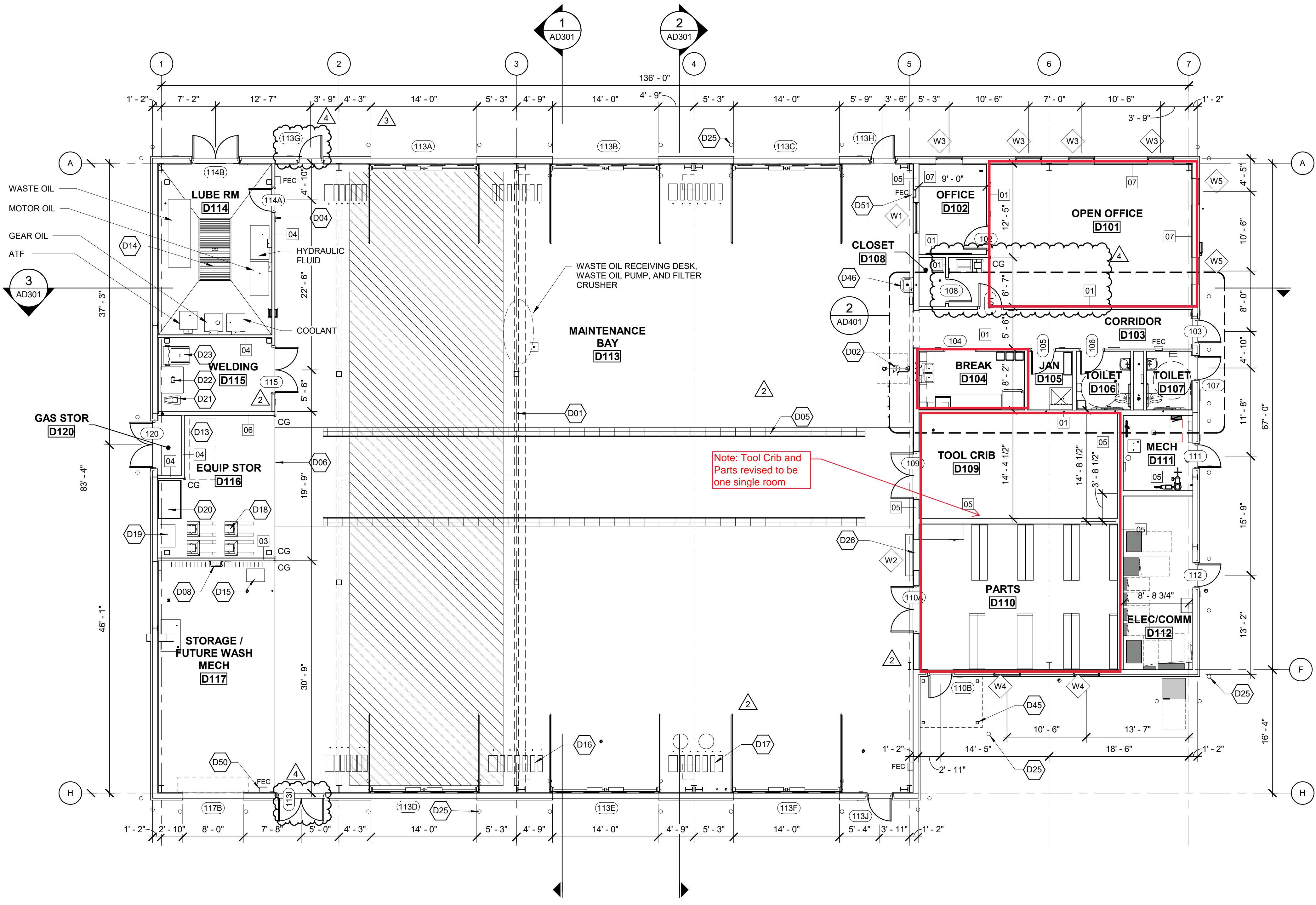
MUNICIPALITY OF ANCHORAGE
SOLID WASTE SERVICES
ADMINISTRATION BUILDING
**SECOND FLOOR
FURNITURE PLAN**

PROJ: 200-93602-19002
DESN: M.BODSKY
DRWN: T.HOURIGAN
CHKD: Q.BIAGI

AB710

Copyright: Tetra Tech

Bar measures 1 inch, otherwise drawing is not to scale



FIRST FLOOR PLAN
SCALE: 1/8" = 1'-0"

 Areas boxed in red to be furnished per RFP requirements

GENERAL NOTES - FLOOR PLAN

- REFER TO SHEETS A-001 AND A-004 FOR GENERAL NOTES, SYMBOLS, LEGENDS AND STANDARDS AND TYPICAL MOUNTING HEIGHTS.
- REFER TO SHEET AD601 FOR DOOR TYPES, FRAME TYPES, AND DOOR SCHEDULE.
- REFER TO SHEETS AD602 FOR PARTITION TYPES AND DETAILS.
- REFER TO SHEET AD603 FOR ROOM FINISH SCHEDULE AND DETAILS.
- REFER TO SHEET AD701 FOR SIGNAGE SCHEDULE AND DETAILS.
- REFER TO PLUMBING FOR ITEMS CALLED OUT IN LUBE ROOM D114.

KEYNOTES

- D01 5TON OVERHEAD BRIDGE CRANE (ITEM NO. EQ-01)
- D02 EYE WASH/SHOWER STATION; REFER TO MECHANICAL
- D04 1HR WALL SEPERATION; REFER TO PARTITION TYPES
- D05 TRENCH DRAIN
- D06 LINE OF MEZZANINE ABOVE
- D08 MEZZANINE ACCESS LADDER
- D13 HYDRAULIC CYLINDER STORAGE
- D14 SUMP WITH GRATING
- D15 LANDA PRESSURE WASHER
- D16 PRESSURE WASHER DROP ABOVE, REF. MECH.
- D17 LUBE REELS ABOVE
- D18 KONI TRUCK LIFTS
- D19 ROBINAIR AC MACHINE
- D20 CUDA PARTS WASHER
- D21 DELTA DRILL PRESS
- D22 DAYTON BENCH GRINDER
- D23 MILLERMATIC WELDER
- D25 BOLLARD; REFER TO DETAIL 2/AD503 AND 6/AD503 FOR GENERAL LAYOUT; REFER TO CIVIL FOR EXTERIOR BUILDING PERIMETER LOCATION AND DETAIL
- D26 ROLL UP ALUMINUM SLAT COUNTER DOOR
- D45 OVERHEAD PEMB ENTRY CANOPY ROOF WITH STANDING SEAM METAL ROOF SYSTEM; REFER TO DETAILS 3/AD503-RIDGE, 4/AD503-DRIP EDGE AND 7/AD503-RAKE
- D46 SERVICE SINK
- D50 FEC - FIRE EXTINGUISHER CABINET; SURFACE MOUNTED TYPE, TYP
- D51 FEC - FIRE EXTINGUISHER CABINET; SEMI-RECESSED MOUNTED TYPE, TYP

AECL1177
TETRA TECH
1420 Fifth Avenue, Suite 600
Seattle, Washington 98101
Enter address here
www.tetratc.com

AECL848
DOWL
WWW.DOWL.COM
4041 B Street
Anchorage, Alaska 99503
907-562-2000

ASI-3
STATE OF ALASKA
49th
Miss Margaret Bodsky
No. A-14623
JUNE 22, 2021

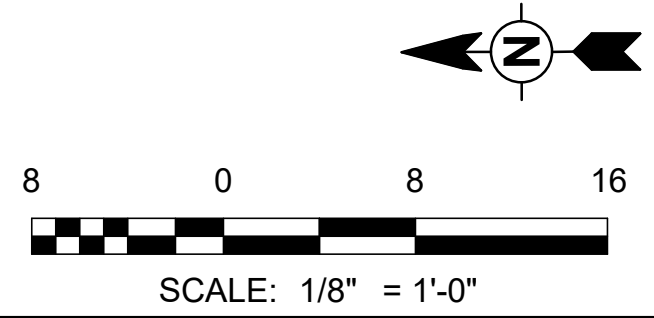
SWS
SOLID WASTE SERVICES
VEHICLE MAINTENANCE
ARCHITECTURAL FLOOR PLAN

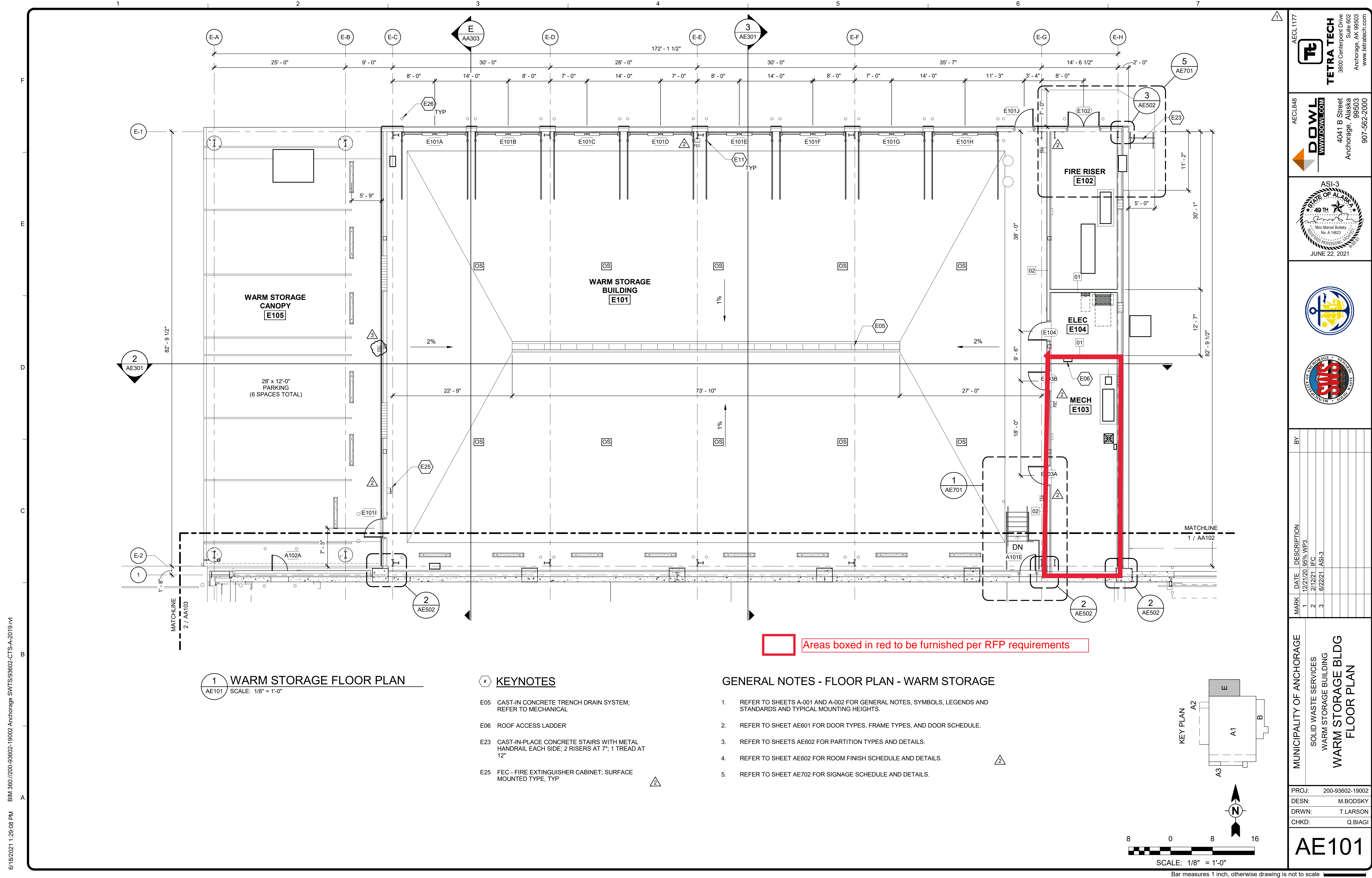
MARK	DATE	DESCRIPTION
1	12/21/20	95% WP3
2	2/12/21	IFC
3	4/21/21	ASI-2
4	6/4/21	ASI-3

MUNICIPALITY OF ANCHORAGE
SOLID WASTE SERVICES
VEHICLE MAINTENANCE
ARCHITECTURAL FLOOR PLAN

PROJ:	200-93602-19002
DESN:	M.BODSKY
DRWN:	E.HAN
CHKD:	Q.BIAGI

AD101





2
AE301

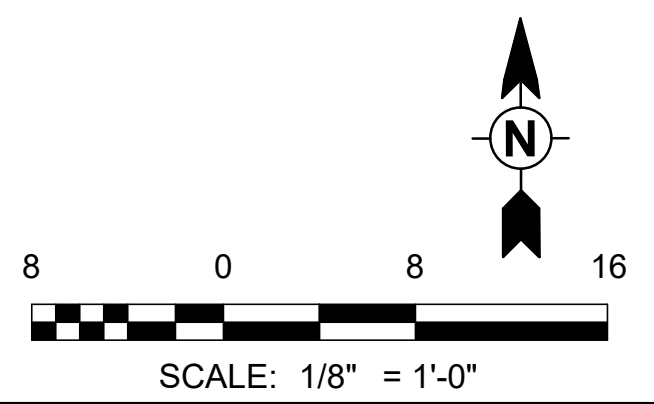
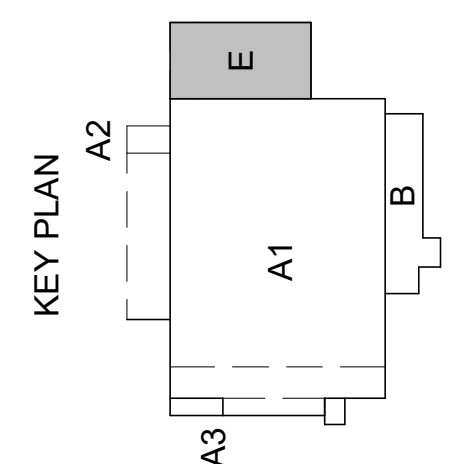
1 WARM STORAGE FLOOR PLAN
AE101 SCALE: 1/8" = 1'-0"

- # KEYNOTES
- E05 CAST-IN CONCRETE TRENCH DRAIN SYSTEM; REFER TO MECHANICAL
 - E06 ROOF ACCESS LADDER
 - E23 CAST-IN-PLACE CONCRETE STAIRS WITH METAL HANDRAIL EACH SIDE; 2 RISERS AT 7"; 1 TREAD AT 12"
 - E25 FEC - FIRE EXTINGUISHER CABINET; SURFACE MOUNTED TYPE, TYP

GENERAL NOTES - FLOOR PLAN - WARM STORAGE

1. REFER TO SHEETS A-001 AND A-002 FOR GENERAL NOTES, SYMBOLS, LEGENDS AND STANDARDS AND TYPICAL MOUNTING HEIGHTS.
2. REFER TO SHEET AE601 FOR DOOR TYPES, FRAME TYPES, AND DOOR SCHEDULE.
3. REFER TO SHEETS AE602 FOR PARTITION TYPES AND DETAILS.
4. REFER TO SHEET AE602 FOR ROOM FINISH SCHEDULE AND DETAILS.
5. REFER TO SHEET AE702 FOR SIGNAGE SCHEDULE AND DETAILS.

Areas boxed in red to be furnished per RFP requirements



AECL1177

TETRA TECH
 3800 Centerpoint Drive
 Anchorage, Alaska 99503
 www.tetra-tech.com

AECL848

DOWL
 WWW.DOWLGO.COM
 4041 B Street
 Anchorage, Alaska 99503
 907-562-2000

ASI-3

 MISS MARGARET BODSKY
 No. A 14623
 STATE OF ALASKA
 JUNE 22, 2021

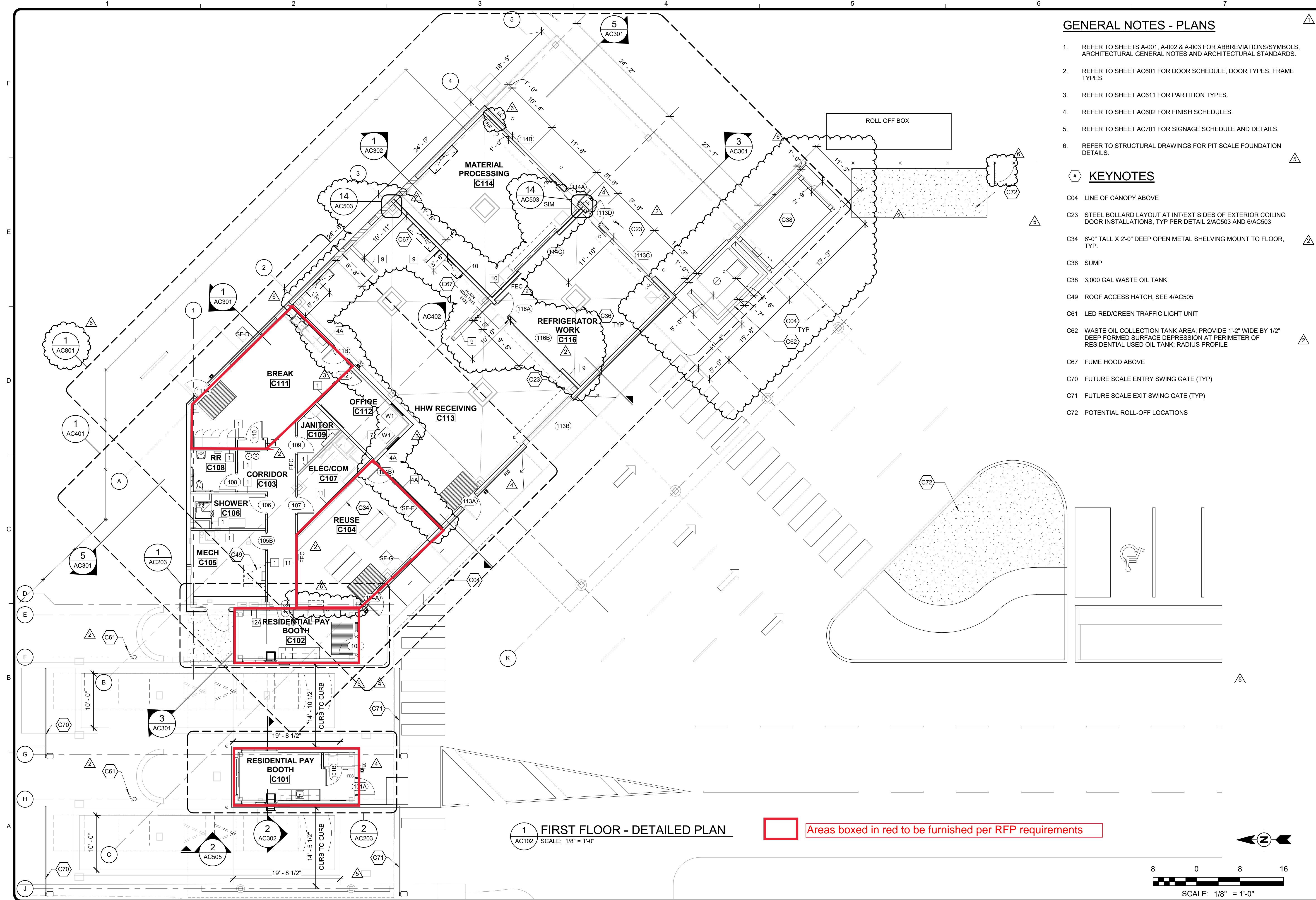
MARK	DATE	DESCRIPTION	BY
1	12/21/20	95% WP3	
2	2/12/21	IFC	
3	6/22/21	ASI-3	

MUNICIPALITY OF ANCHORAGE
 SOLID WASTE SERVICES
 WARM STORAGE BUILDING
WARM STORAGE BLDG FLOOR PLAN

PROJ: 200-93602-19002
 DESN: M.BODSKY
 DRWN: T.LARSON
 CHKD: Q.BIAGI

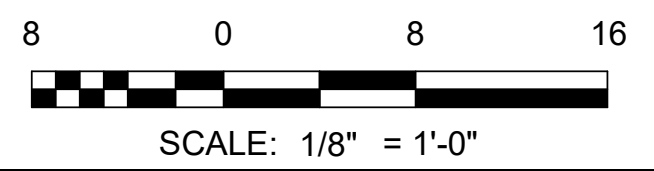
AE101

4/19/2022 5:06:44 PM BIM 360://200-93602-19002 Anchorage SVT/93602-HHWRCB-A-2019.rvt



1 FIRST FLOOR - DETAILED PLAN
SCALE: 1/8" = 1'-0"

Areas boxed in red to be furnished per RFP requirements



GENERAL NOTES - PLANS

- REFER TO SHEETS A-001, A-002 & A-003 FOR ABBREVIATIONS/SYMBOLS, ARCHITECTURAL GENERAL NOTES AND ARCHITECTURAL STANDARDS.
- REFER TO SHEET AC601 FOR DOOR SCHEDULE, DOOR TYPES, FRAME TYPES.
- REFER TO SHEET AC611 FOR PARTITION TYPES.
- REFER TO SHEET AC602 FOR FINISH SCHEDULES.
- REFER TO SHEET AC701 FOR SIGNAGE SCHEDULE AND DETAILS.
- REFER TO STRUCTURAL DRAWINGS FOR PIT SCALE FOUNDATION DETAILS.

KEYNOTES

- C04 LINE OF CANOPY ABOVE
- C23 STEEL BOLLARD LAYOUT AT INT/EXT SIDES OF EXTERIOR COILING DOOR INSTALLATIONS, TYP PER DETAIL 2/AC503 AND 6/AC503
- C34 6'-0" TALL X 2'-0" DEEP OPEN METAL SHELVING MOUNT TO FLOOR, TYP.
- C36 SUMP
- C38 3,000 GAL WASTE OIL TANK
- C49 ROOF ACCESS HATCH, SEE 4/AC505
- C61 LED RED/GREEN TRAFFIC LIGHT UNIT
- C62 WASTE OIL COLLECTION TANK AREA; PROVIDE 1'-2" WIDE BY 1/2" DEEP FORMED SURFACE DEPRESSION AT PERIMETER OF RESIDENTIAL USED OIL TANK; RADIUS PROFILE
- C67 FUME HOOD ABOVE
- C70 FUTURE SCALE ENTRY SWING GATE (TYP)
- C71 FUTURE SCALE EXIT SWING GATE (TYP)
- C72 POTENTIAL ROLL-OFF LOCATIONS

AECL1177

TETRA TECH
1420 Fifth Avenue, Suite 600
Seattle, Washington 98101
Enter address here
www.tetra.tech

AECL848

DOWL

4041 B Street
Anchorage, Alaska 99503
907-562-2000

ASL5

BY

MARK	DATE	DESCRIPTION
1	12/21/20	95% WP3
2	2/12/21	IFC
3	4/21/21	ASL-2
4	4/27/21	ASL-3
5	9/8/21	ASL-4
6	04/19/22	ASL-5 - HAZ MAT REVISIONS

MUNICIPALITY OF ANCHORAGE

SOLID WASTE SERVICES
HHW AND RPB

FIRST FLOOR PLAN -
DETAILED

PROJ: 200-93602-19002

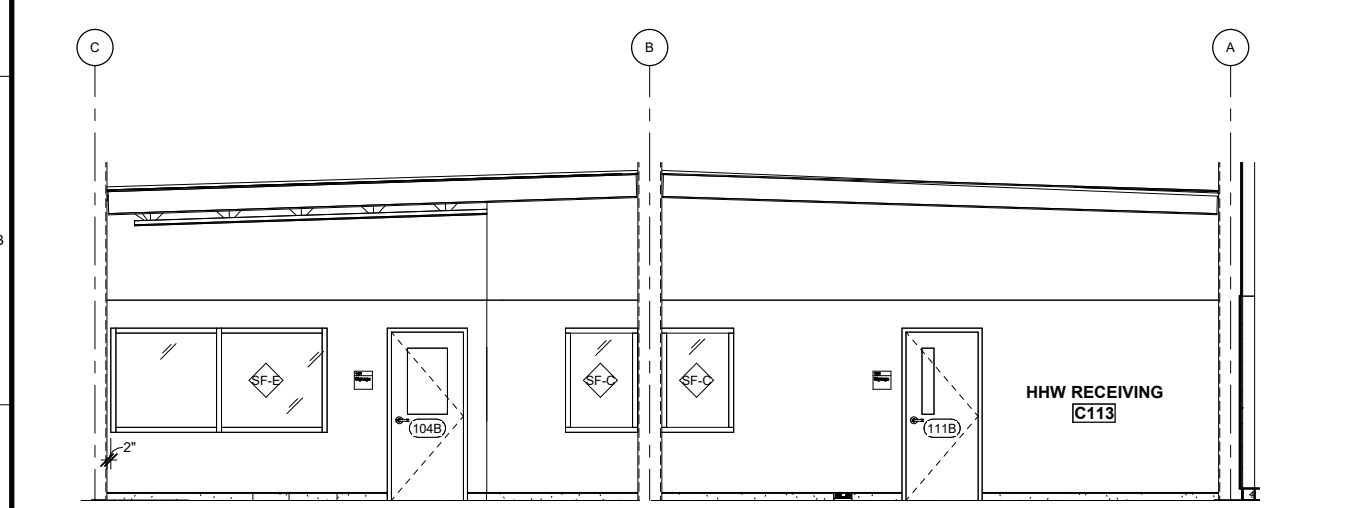
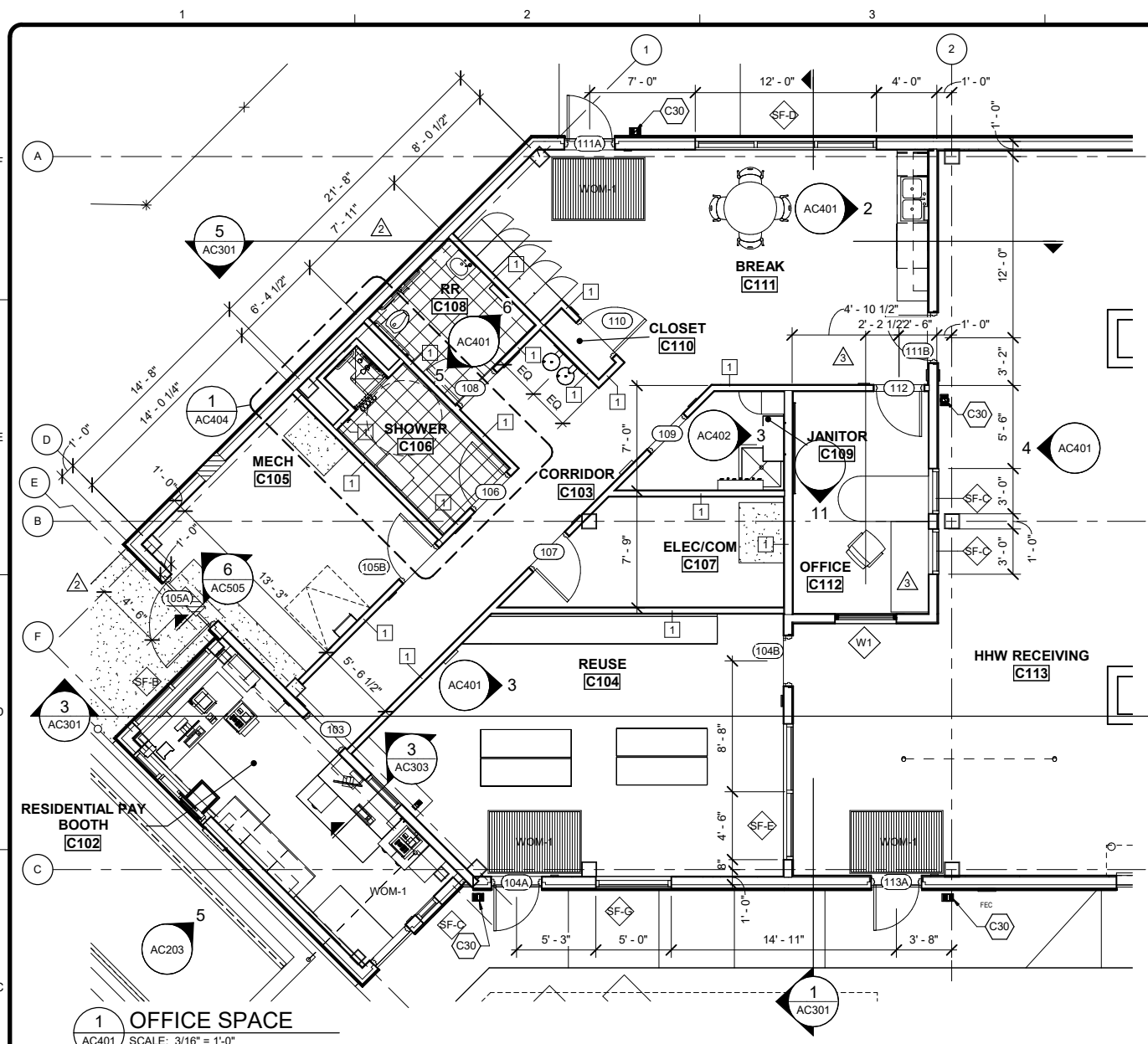
DES: M.BODSKY

DRWN: E.HAN

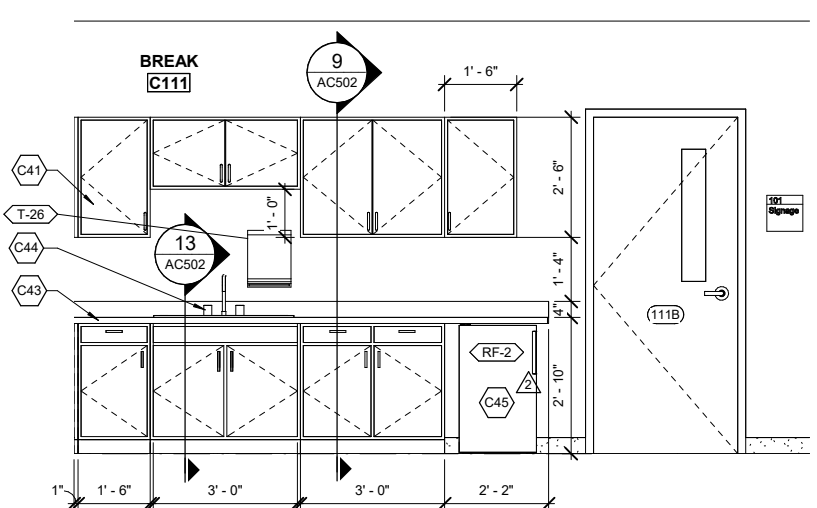
CHKD: Q.BIAGI

AC102

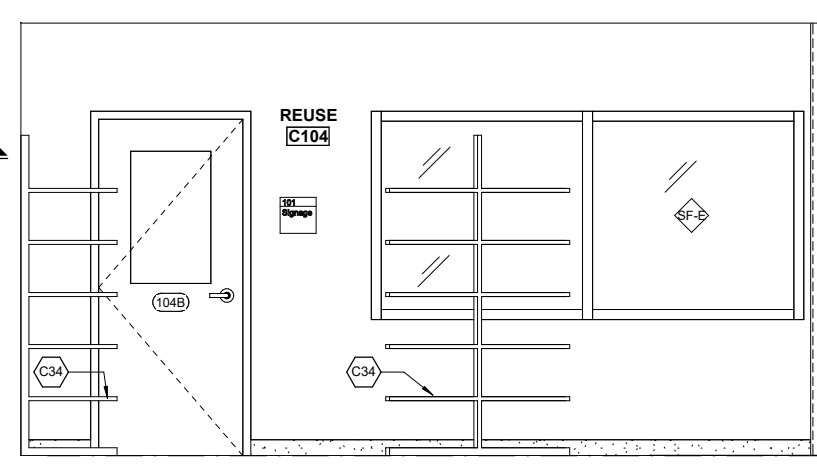
Copyright: Tetra Tech



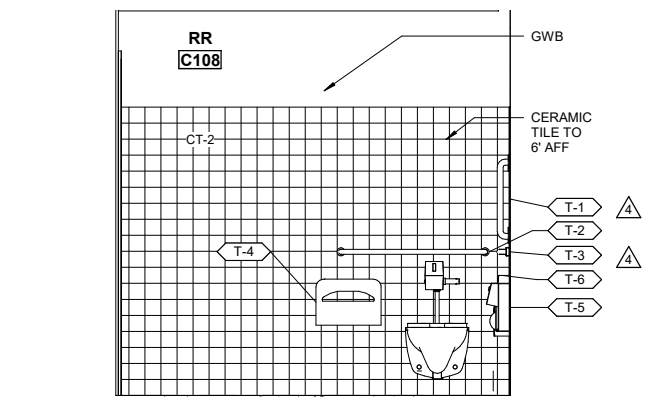
4 NORTH ELEVATION (HHW RECEIVING C113)
AC401 SCALE: 1/4" = 1'-0"



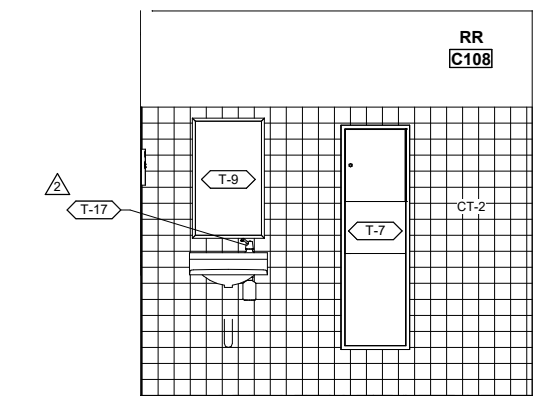
2 BREAK ROOM
AC401 SCALE: 1/2" = 1'-0"



3 REUSE ROOM
AC401 SCALE: 1/2" = 1'-0"



5 WEST ELEVATION (RR C108)
AC401 SCALE: 1/2" = 1'-0"



6 EAST ELEVATION (RR C108)
AC401 SCALE: 1/2" = 1'-0"

GENERAL NOTES - RESTROOMS

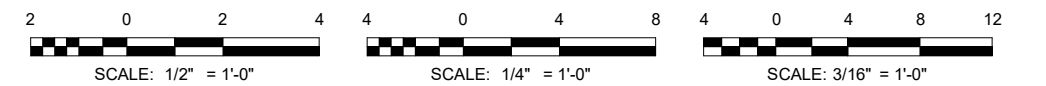
- REFER TO SHEETS A-001, A-002 & A-003 FOR ABBREVIATIONS/SYMBOLS, ARCHITECTURAL GENERAL NOTES AND ARCHITECTURAL STANDARDS.
- PROVIDE PIPE GUARDS AT ALL WALL-MOUNTED LAVATORIES.
- REFER TO SHEET AC601 FOR DOOR SCHEDULE, DOOR TYPES, FRAME TYPES.

RESTROOM ACCESSORIES SCHEDULE

MARK	DESCRIPTION	ADA COMPLIANT
T-1	48" SS GRAB BAR	YES
T-2	36" SS GRAB BAR	YES
T-3	18" SS VERTICAL GRAB BAR	YES
T-4	SEAT COVER DISPENSER	YES
T-5	MULTI-ROLL TOILET TISSUE DISPENSER	YES
T-6	SANITARY NAPKIN DISPOSAL	YES
T-7	PAPER TOWEL DISPENSER AND RECEPTACLE	YES
T-8	SOAP DISPENSER	YES
T-9	24" x 36" S.S. FRAMED MIRROR	YES
T-10	MOP AND BROOM HOLDER	YES
T-11	NOT USED	
T-12	NOT USED	
T-13	ROBE HOOK	YES
T-14	SHOWER CURTAIN AND ROD	YES
T-15	NOT USED	
T-16	SINGLE TIER LOCKER	YES
T-17	SOAP DISPENSER, TOP-FILL	YES
T-18	PAPER TOWEL DISPENSER - ROLL TYPE	YES
T-19	NOT USED	
T-20	NOT USED	
T-21	NOT USED	
T-22	WALL-MOUNTED, 2'-9" WIDE L-SHAPED FOLDABLE SHOWER BENCH	YES
T-23	WALL-MOUNTED, 2'-4" X 1'-6" FOLDABLE BENCH	YES
T-24	24" SS GRAB BAR	YES
T-25	SHOWER HEAD, WAND, CONTROL, SOAP DISPENSER	YES
T-26	FOLDING PAPER TOWEL DISPENSER - C-FOLD TYPE	YES

KEYNOTES

- C30 BOOT SCRUBBER
- C34 6'-0" TALL X 2'-0" DEEP OPEN METAL SHELVING MOUNT TO FLOOR, TYP.
- C41 CABINET W/ PLASTIC LAMINATE FINISH
- C43 SOLID SURFACE COUNTERTOP AND BACKSPLASH
- C44 ADA COMPLIANT SINK
- C45 FRIDGE UNDER COUNTER



AECL1177

TETRA TECH
 1420 Fifth Avenue, Suite 800
 Seattle, Washington 98101
 Enter address here
 www.tetrattech.com

AECL848

DOWL
 4041 B Street
 Anchorage, Alaska 99503
 907-562-2000

ASI-4

ASIT
 49th
 Alaska State Inspection Technician
 No. A 14823
 Miss Margaret Boddy
 PROFESSIONAL
 SEPTEMBER 8, 2021

BY

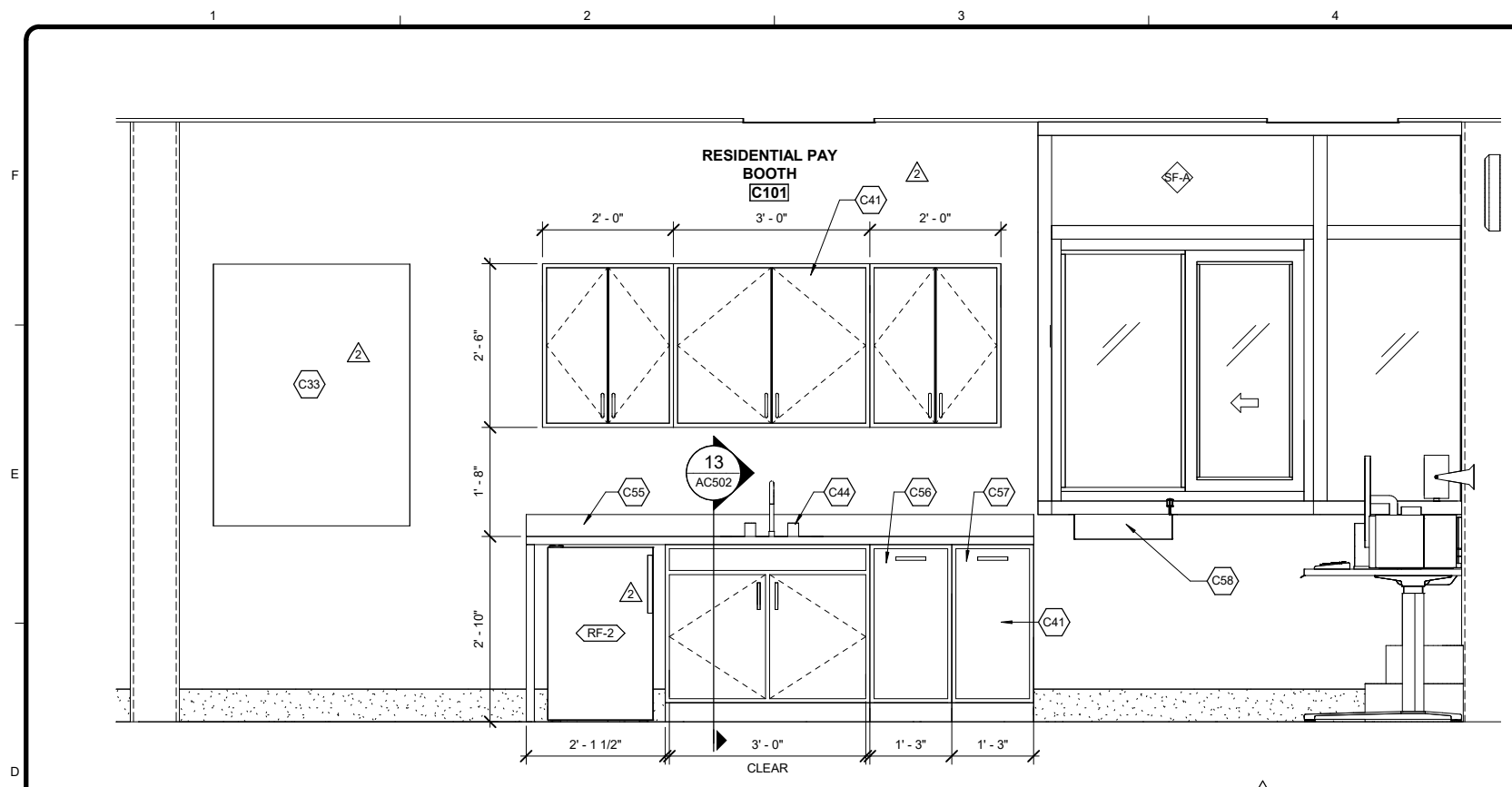
MARK DATE DESCRIPTION
 1 12/21/20 95% W/F3
 2 2/12/21 IFC
 3 4/12/21 ASI-2
 4 4/27/21 ASI-3

MUNICIPALITY OF ANCHORAGE
 SOLID WASTE SERVICES
 HHW AND RPB
ENLARGED PLANS AND INTERIOR ELEVATIONS

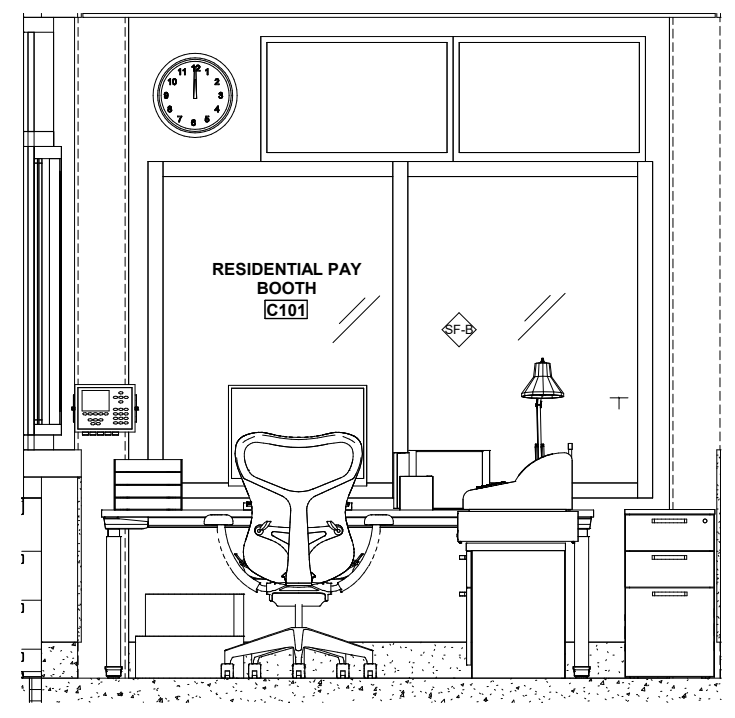
PROJ: 200-93602-19002
 DESN: M.BODSKY
 DRWN: E.HAN
 CHKD: Q.BIAGI

AC401
 Copyright: Tetra Tech

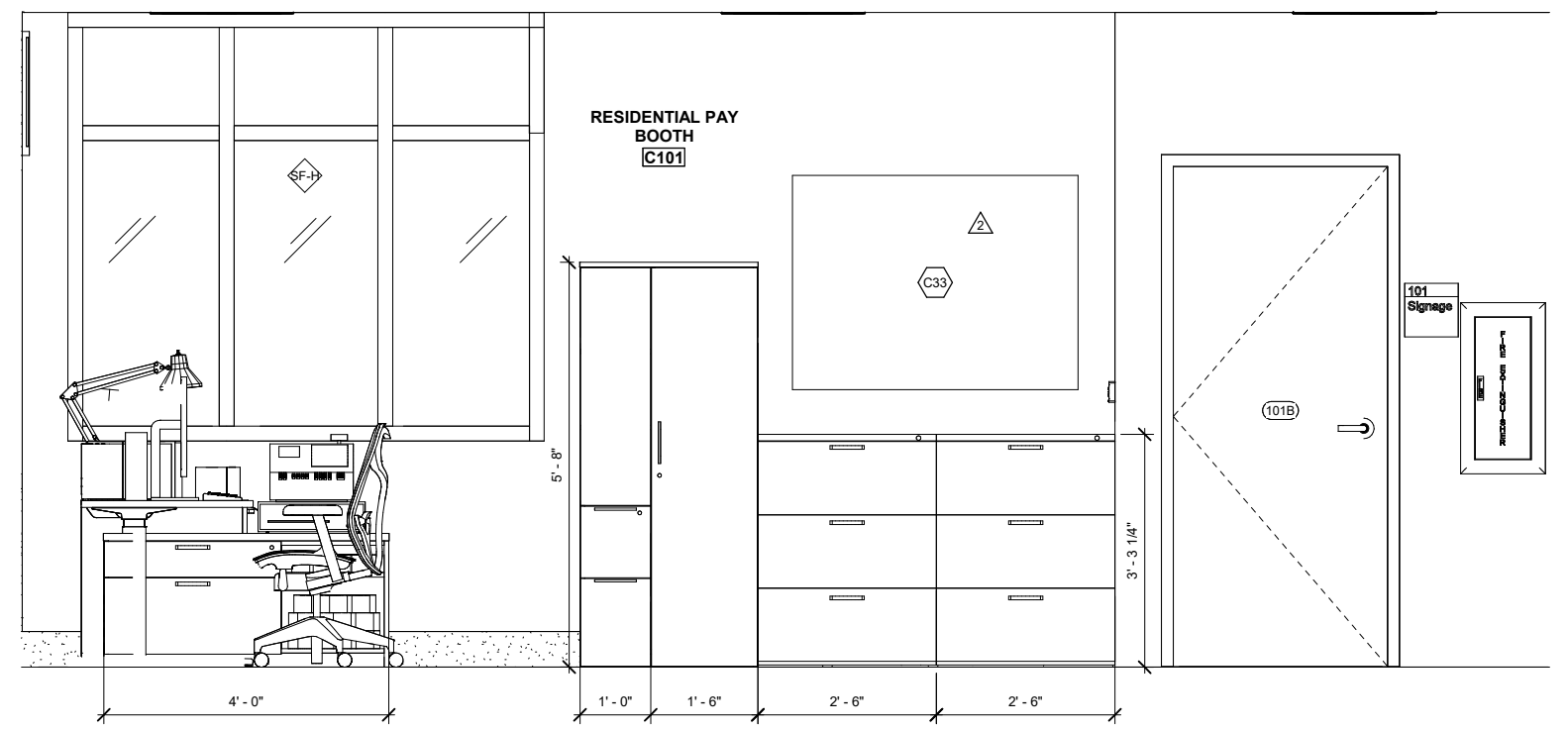
12/29/2021 3:04:40 PM BIM_360/1200-93602-19002 Anchorage SVT93602-HHWRCBA-2019.rvt



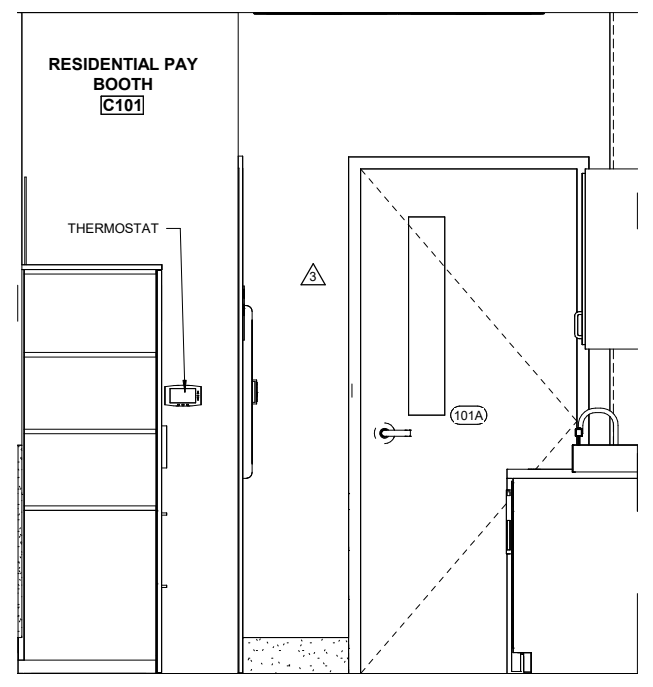
1 WEST RPB - WEST
AC403 SCALE: 3/4" = 1'-0"



2 WEST RPB - NORTH
AC403 SCALE: 3/4" = 1'-0"

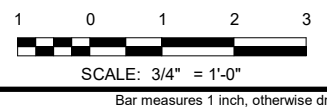


3 WEST RPB - EAST
AC403 SCALE: 3/4" = 1'-0"



4 WEST RPB - SOUTH
AC403 SCALE: 3/4" = 1'-0"

- # KEYNOTES
- C33 4'-0" X 3'-0" TACK BOARD, WALL MOUNTED
 - C41 CABINET W/ PLASTIC LAMINATE FINISH
 - C44 ADA COMPLIANT SINK
 - C55 SOLID SURFACE COUNTERTOP
 - C56 WASTE BIN, DRAWER
 - C57 RECYCLE BIN, DRAWER
 - C58 TRANSACTION TRAY



AECL1177

TETRA TECH
 1420 Fifth Avenue, Suite 800
 Seattle, Washington 98101
 Enter address here
 www.tetrattech.com

AECL848

DOWL
 4041 B Street
 Anchorage, Alaska 99503
 907-562-2000

ASI-4

 SEPTEMBER 8, 2021

MARK	DATE	DESCRIPTION
1	1/22/20	65% WP3
2	2/12/21	IFC
3	4/27/21	ASI-3

MUNICIPALITY OF ANCHORAGE
 SOLID WASTE SERVICES
 HHW AND RPB
INTERIOR ELEVATIONS

PROJ: 200-93602-19002
 DESN: M.BODSKY
 DRWN: E.HAN
 CHKD: Q.BIAGI

AC403

12/29/2021 3:04:41 PM BIM_360/200-93602-19002 Anchorage SVT593602-HHWRCB-A-2019.rvt

Copyright: Tetra Tech

GENERAL NOTES - FINISHES

EXTERIOR METAL PANELS ARE CENTERED TO MINIMIZE NARROW PIECES AT EDGES OF WALL UNLESS STATED OTHERWISE.

INTERIOR MATERIAL LEGEND

ACT	ACOUSTIC CEILING TILE
CONC	CONCRETE
CPT	CARPET TILE
CT	CERAMIC TILE
FRP	FIRE REINFORCED PLASTIC
FTP	FIRE-TREATED PLYWOOD
GWB	OPEN TO STRUCTURE
HM	HOLLOW METAL
ITP	INTERIOR PAINT
OTS	OPEN TO STRUCTURE
R	RUBBER BASE
RT	RUBBER TILE
RTD	RUBBER TREAD
SLR	SEALER
ST	STONE TILE
STL	STEEL
VCT	VINYL COMPOSITION TILE
WD	WOOD

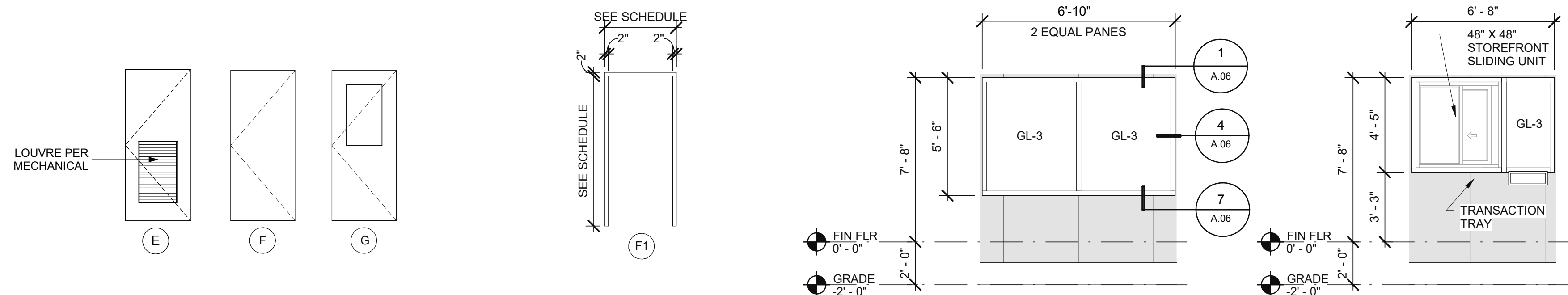
GLAZING LEGEND

GL-1	TEMPERED FLOAT GLASS
GL-2	LAMINATED GLASS
GL-3	SOLAR-CONTROL LOW-E INSUL CLEAR GLASS UNITS
GL-4	SOLAR-CONTROL LOW-E INSUL OBSCURE GLASS UNITS
SP-1	SPANDREL LOW-E INSUL GLASS UNITS

#	DOOR	DOOR SCHEDULE										COMMENTS								
		NUM	TYPE	SIZE			MATERIAL	FINISH	FRAME TYPE	MAT	FINISH		DETAILS			FIRE RATING	HARDWARE SET	PANIC DEVICE	CARD READER	U-VALUE
				WIDTH	HEIGHT	THICKNESS							HEAD	JAMB	SILL					
101	G	3'-0"	6'-8"	1 3/4"	IHM	FF	F1	IHM	EPT	2/A.06	5/A.06	8/A.06	N/A	01			X			
102	E	3'-0"	6'-8"	1 3/4"	WD	STN	F1	HM	IP	3/A.06	6/A.06		N/A	02						
103	F	3'-0"	6'-8"	1 3/4"	WD	STN	F1	HM	IP	3/A.06	6/A.06		N/A	03						

ROOM NUM	ROOM NAME	FINISH SCHEDULE										COMMENTS
		FLOOR MAT / FINISH	BASE	WALLS (MATERIAL/FINISH)				COUNTER	CEILING			
				NORTH	EAST	SOUTH	WEST		MAT / FINISH	HEIGHT		
101	ELEC/COMM	SV	R	VCG	VCG	VCG	VCG	VCG		VCG	9'-0"	
102	BREAK	SV	R	VCG	VCG	VCG	VCG	VCG		SS-1	VCG	9'-0"
103	RESTROOM	SV	R	VCG	VCG	VCG	VCG	VCG			VCG	9'-0"
104	CONTROL	SV	R	VCG	VCG	VCG	VCG	VCG		SS-1	VCG	9'-0"

MATERIAL	COLOR	STYLE	SIZE	MFR & COMMENTS
VCG				
PLAM	COSMIC STRAND Z4941K-18	BASIC LAMINATE, TYPE 335		WILSONART
R	BROWN		4" TALL	ROPPE
SV	SMOKEY 5670R			MANNINGTON
SLR	CLEAR	MATTE		SEALER FOR CONC FLOOR
SS-1	SILVER BIRCH	TERRA COLLECTION		CORIAN
WINDOW FRAME	CLEAR	ANODIZED ALUMINUM		THE BRYER COMPANY



- NOTES:
 1. FOR DOOR WIDTH AND HEIGHT, SEE DOOR SCHEDULE.
 2. PROVIDE INSULATED GLAZING AT ALL EXTERIOR WALL LOCATIONS, UNO

DOOR TYPES

SCALE: 1/4" = 1'-0"

FRAME TYPES

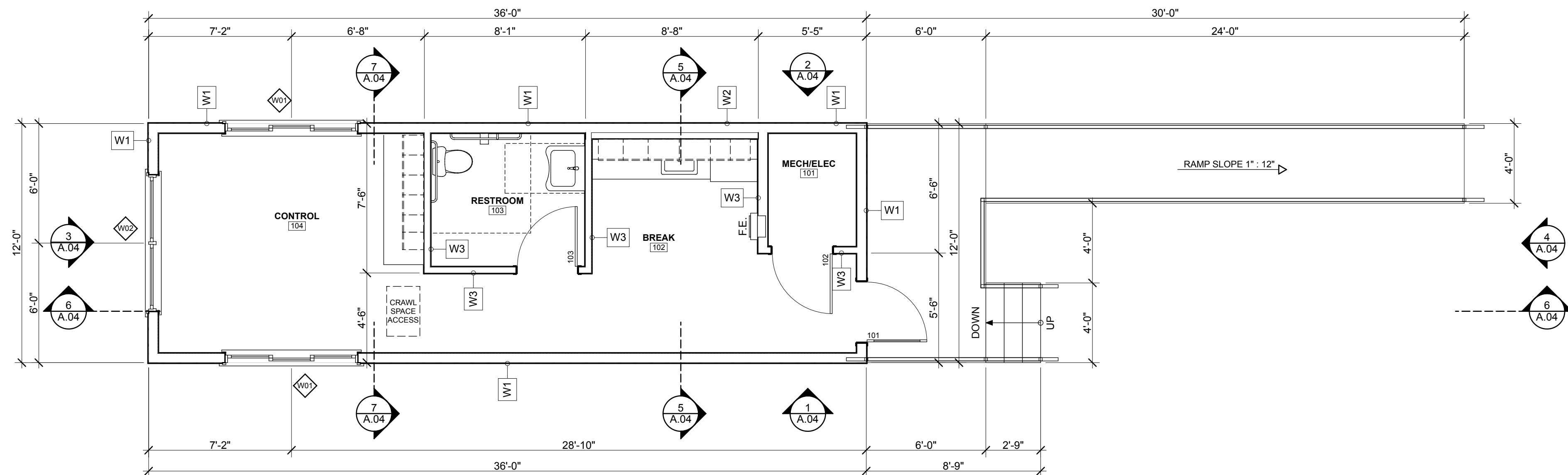
SCALE: 1/4" = 1'-0"

STOREFRONT A

SCALE: 1/4" = 1'-0"

STOREFRONT B

SCALE: 1/4" = 1'-0"



1 FIRST FLOOR PLAN

SCALE: 1/4" = 1'-0"

MCMLLEN DESIGNS, LLC ALL RIGHTS RESERVED. THIS DRAWING IS AN INSTRUMENT OF SERVICE AND IS THE SOLE PROPERTY OF MCMLLEN DESIGNS, LLC. NO PART OF THIS DRAWING SHALL BE REPRODUCED OR TRANSMITTED IN ANY FORM OR BY ANY MEANS, ELECTRONIC OR MECHANICAL, INCLUDING PHOTOCOPYING, RECORDING, OR BY ANY INFORMATION STORAGE AND RETRIEVAL SYSTEM, WITHOUT THE WRITTEN CONSENT OF MCMLLEN DESIGNS, LLC. THE ARCHITECT SHALL NOT BE RESPONSIBLE FOR CONSTRUCTION MEANS, METHODS, OR FOR SAFETY PRECAUTIONS AND PROGRAMS IN CONNECTION WITH THIS DRAWING. ALL CONTRACTORS SHALL BE RESPONSIBLE FOR OBTAINING ALL NECESSARY PERMITS AND APPROVALS FROM THE APPROPRIATE AGENCIES. ALL CONTRACTORS SHALL WORK IN ACCORDANCE WITH THE CONTRACT DOCUMENTS. ALWAYS USE DIMENSIONS AS SHOWN. DRAWINGS ARE NOT TO BE USED FOR CONSTRUCTION UNLESS SPECIFICALLY NOTED OTHERWISE. DRAWING INTENTED TO ACCURATELY REFLECT FIELD CONDITIONS. WRITTEN DIMENSIONS SHALL GOVERN. SCALED.



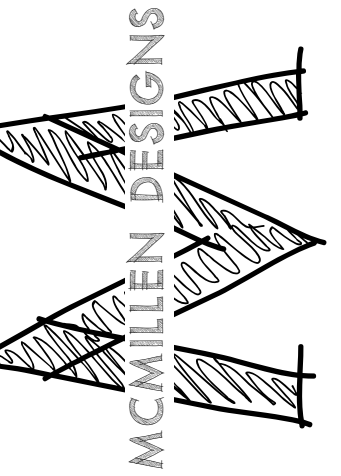
M.O.A. COMMERCIAL SCALE HOUSE
NANA CONSTRUCTION
 2053 S Miakar Circle,
 Big Lake, AK 99652
 907-892-9852

BY	REVISIONS	DATE

Date: 7/16/22
 Scale: AS NOTED
 Drawn:
 Job:
 Sheet:
A.03

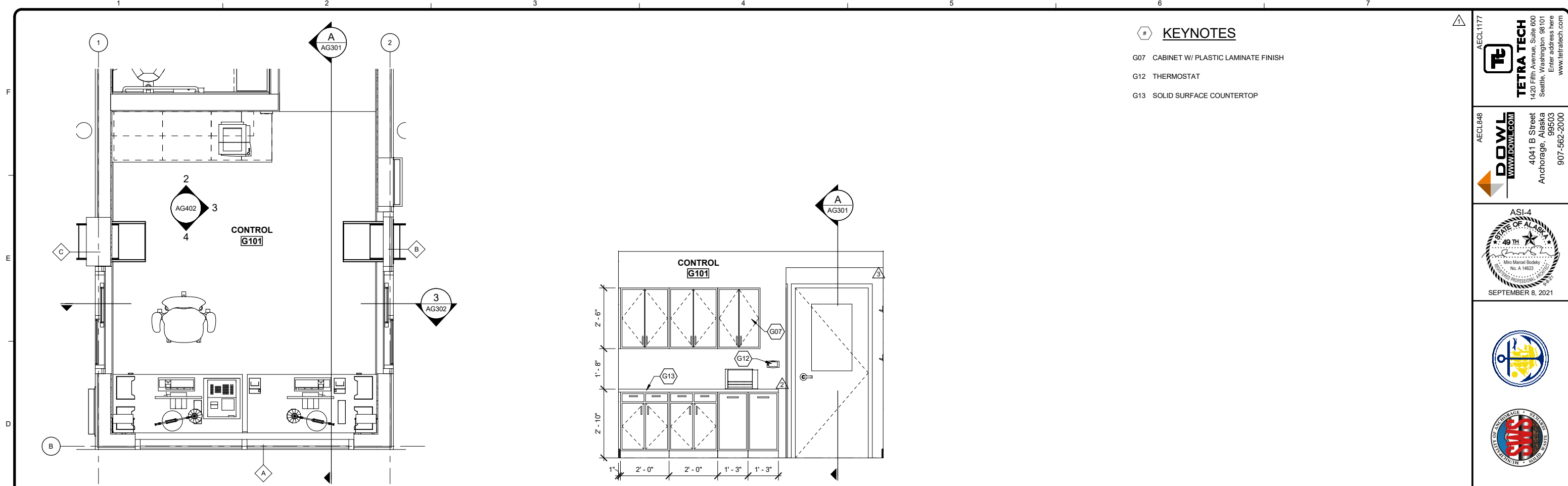
Plotted On: 7/16/22

189 E. NELSON AVE. PMB 140
 WASILLA, ALASKA 99654
 PHONE: 907.376.5755
 FAX: 907.376.5765
 Email: Brian@McMillenDesigns.com
 www.McMillenDesigns.com



COMMERCIAL & RESIDENTIAL ARCHITECTURE

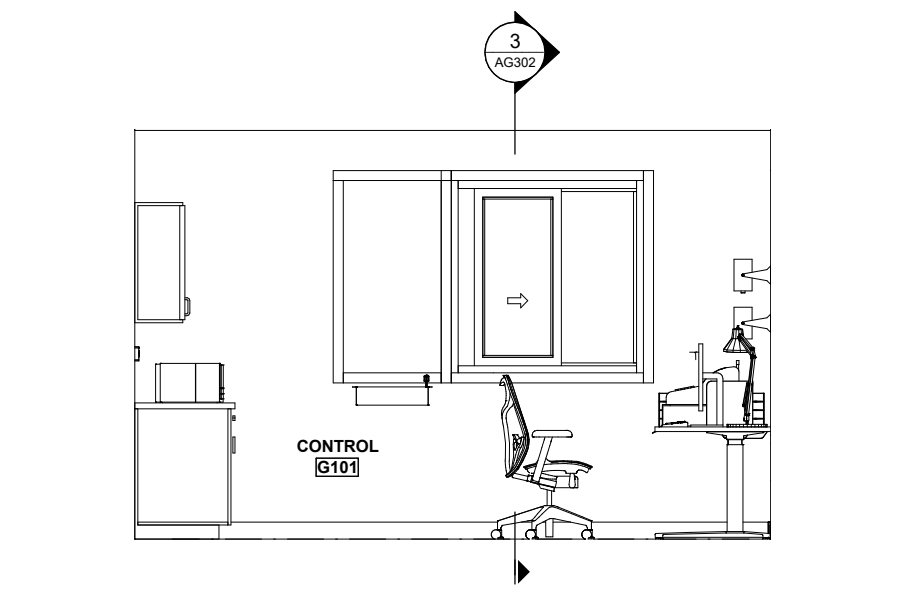
FLOOR PLANS



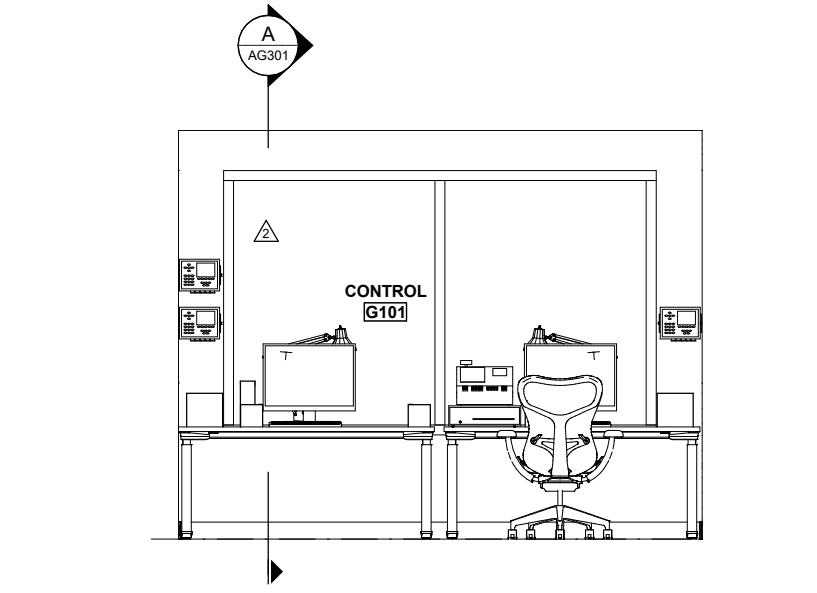
- KEYNOTES**
- G07 CABINET W/ PLASTIC LAMINATE FINISH
 - G12 THERMOSTAT
 - G13 SOLID SURFACE COUNTERTOP

1 ENLARGED CONTROL PLAN
 AG402 SCALE: 1/2" = 1'-0"

2 CONTROL ROOM - SOUTH
 AG402 SCALE: 1/2" = 1'-0"

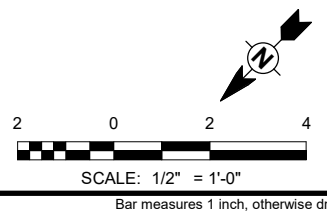


3 CONTROL ROOM - WEST
 AG402 SCALE: 1/2" = 1'-0"



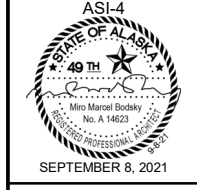
4 CONTROL ROOM - NORTH
 AG402 SCALE: 1/2" = 1'-0"

**PREMANUFACTURED
 BOOTH/MODULAR
 CONSTRUCTION UNDER
 SEPARATE PERMIT**



AECL-1177
Tetra Tech
 1420 Fifth Avenue, Suite 800
 Seattle, Washington 98101
 Enter address here
 www.tetrattech.com

AECL-848
DOWL
 WWW.DOWL.COM
 4041 B Street
 Anchorage, Alaska
 99503
 907-562-2000



MARK	DATE	DESCRIPTION
1	1/21/20	65% WP3
2	2/12/21	IFC
3	4/12/21	ASL-2

MUNICIPALITY OF ANCHORAGE
 SOLID WASTE SERVICES
 COMMERCIAL SCALE HOUSE
**ENLARGED PLAN AND
 INTERIOR ELEVATIONS**

PROJ: 200-93602-19002
 DESN: M.BODSKY
 DRWN: E.HAN
 CHKD: Q.BIAGI

AG402

GENERAL NOTES - FINISHES

EXTERIOR METAL PANELS ARE CENTERED TO MINIMIZE NARROW PIECES AT EDGES OF WALL UNLESS STATED OTHERWISE.

INTERIOR MATERIAL LEGEND

ACT	ACOUSTIC CEILING TILE
CONC	CONCRETE
CPT	CARPET TILE
CT	CERAMIC TILE
FRP	FIRE REINFORCED PLASTIC
FTP	FIRE-TREATED PLYWOOD
GWB	OPEN TO STRUCTURE
HM	HOLLOW METAL
ITP	INTERIOR PAINT
OTS	OPEN TO STRUCTURE
R	RUBBER BASE
RT	RUBBER TILE
RTD	RUBBER TREAD
SLR	SEALER
ST	STONE TILE
STL	STEEL
VCT	VINYL COMPOSITION TILE
WD	WOOD

GLAZING LEGEND

GL-1	TEMPERED FLOAT GLASS
GL-2	LAMINATED GLASS
GL-3	SOLAR-CONTROL LOW-E INSUL CLEAR GLASS UNITS
GL-4	SOLAR-CONTROL LOW-E INSUL OBSCURE GLASS UNITS
SP-1	SPANDREL LOW-E INSUL GLASS UNITS

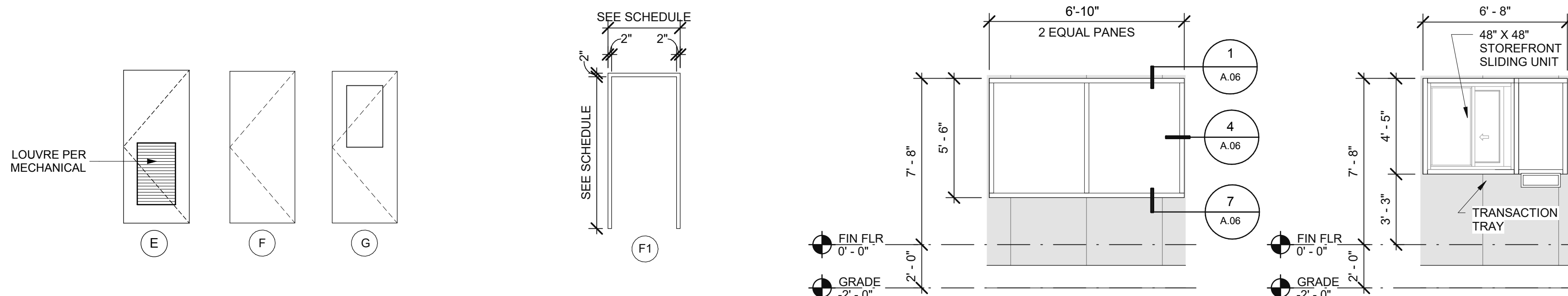
DOOR HARDWARE SETS:

- 01 - EXTERIOR DOOR THRESHOLD 8X36 TB.274X4AFG36
SWEEPS - NEOPRENE SWEEP 36" 315CN36
SMOKE GASKET - SET NEOPRENE W/S 303AS3680
HINGES - 4.5 X 4.5 26D BB HG100004
CLOSERS - CLOSER COLD WEATHER DC100347
KICK PLATE - 10X34 DT100152
PANIC BAR - 3HR EX100046
PANIC TRIM - ESCU LVR TRIM ENTRY EX 100054
- 02 - INTERIOR DOOR TIMELY JAMB SET 54A 3/0 6/8
THRESHOLD 8X36 2748A36
SWEEPS - BRUSH SWEEP 36" 18061CNB36
SMOKE GASKET - WHITE S88W17
HINGES - 4.5 X 4.5 26D BB HG100004
CLOSERS - CLOSER DC100018
LEVER - PASSAGE LC2475CTL
- 03 - INTERIOR DOOR TIMELY JAMB SET 54A 3/0 6/8
THRESHOLD 8X36 2748A36
SWEEPS - BRUSH SWEEP 36" 18061CNB36
SMOKE GASKET - WHITE S88W17
HINGES - 4.5 X 4.5 26D BB HG100004
CLOSERS - CLOSER DC100018
LEVER - PRIVACY LC2476CTL

#	NUM	TYPE	DOOR				FRAME		DETAILS							COMMENTS			
			SIZE			MATERIAL	FINISH	TYPE	MAT	FINISH	HEAD	JAMB	SILL	FIRE RATING	HARDWARE SET		PANIC DEVICE	CARD READER	U-VALUE
			WIDTH	HEIGHT	THICKNESS														
	101	G	3'-0"	6'-8"	1 3/4"	IHM	FF	F1	IHM	EPT	2/A.06	5/A.06	8/A.06	N/A	01				
	102	E	3'-0"	6'-8"	1 3/4"	WD	STN	F1	HM	IP	3/A.06	6/A.06		N/A	02		X		
	103	F	3'-0"	6'-8"	1 3/4"	WD	STN	F1	HM	IP	3/A.06	6/A.06		N/A	03				

ROOM NUM	ROOM NAME	FLOOR		WALLS (MATERIAL/FINISH)				CEILING			COMMENTS
		FINISH	BASE	NORTH	EAST	SOUTH	WEST	COUNTER	MAT / FINISH	HEIGHT	
		101	ELEC/COMM	SV	R	VCG	VCG	VCG	VCG		
102	RESTROOM	SV	R	VCG	VCG	VCG	VCG		VCG	9'-0"	
103	CONTROL	SV	R	VCG	VCG	VCG	VCG	SS-1	VCG	9'-0"	

MATERIAL	COLOR	STYLE	SIZE	MFR & COMMENTS
VCG				
FLAM	COSMIC STRAND Z4941K-18	BASIC LAMINATE, TYPE 335		WILSONART
R	BROWN		4" TALL	ROPPE
SV	SMOKEY 5670R			MANNINGTON
SLR	CLEAR	MATTE		SEALER FOR CONC FLOOR
SS-1	SILVER BIRCH	TERRA COLLECTION		CORIAN
WINDOW FRAME	CLEAR	ANODIZED ALUMINUM		THE BRYER COMPANY



- NOTES:
 1. FOR DOOR WIDTH AND HEIGHT, SEE DOOR SCHEDULE.
 2. PROVIDE INSULATED GLAZING AT ALL EXTERIOR WALL LOCATIONS, UNO

DOOR TYPES

SCALE: 1/4" = 1'-0"

FRAME TYPES

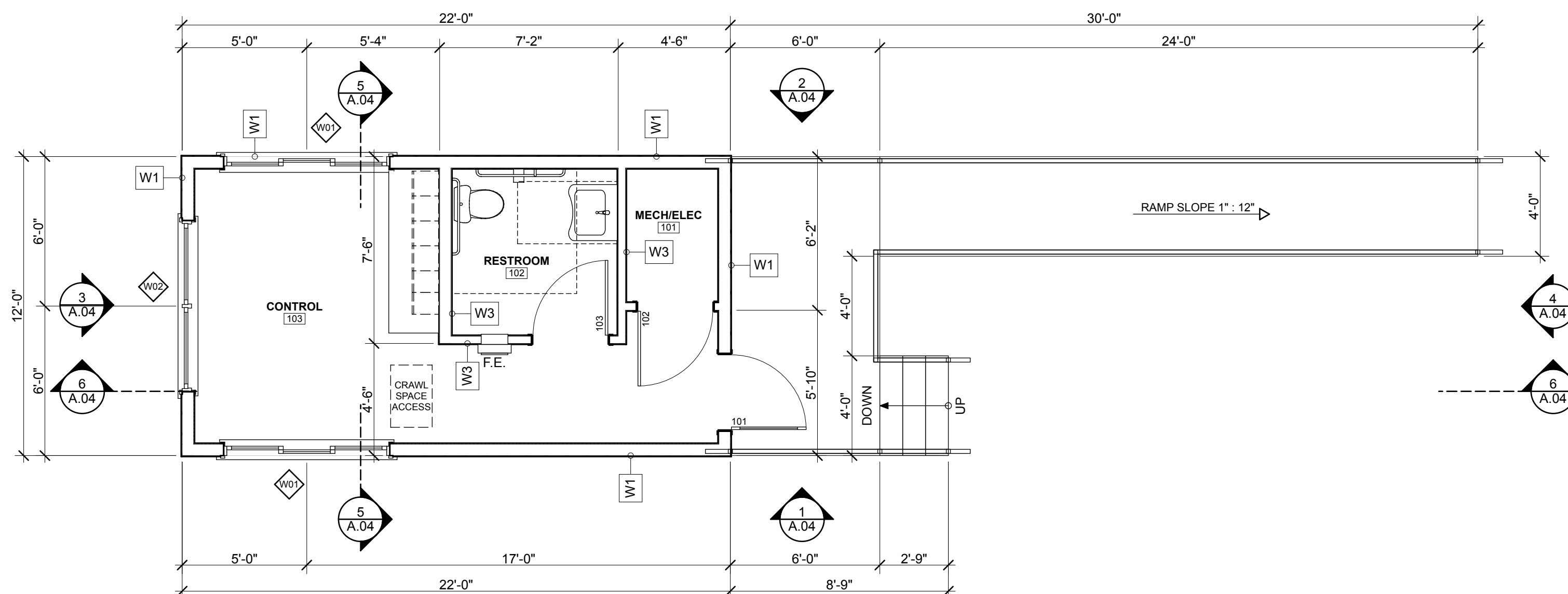
SCALE: 1/4" = 1'-0"

STOREFRONT A

SCALE: 1/4" = 1'-0"

STOREFRONT B

SCALE: 1/4" = 1'-0"



1 FIRST FLOOR PLAN

SCALE: 1/4" = 1'-0"

189 E. NELSON AVE. PMB 140
 WASILLA, ALASKA 99654
 PHONE: 907.376.5755
 FAX: 907.376.5765
 Email: Brian@McMillenDesigns.com
 www.McMillenDesigns.com

MC MILLEN DESIGNS

COMMERCIAL & RESIDENTIAL ARCHITECTURE

MC MILLEN DESIGNS, LLC. ALL RIGHTS RESERVED. THIS DRAWING IS AN INSTRUMENT OF SERVICE AND IS THE SOLE PROPERTY OF MC MILLEN DESIGNS, LLC. IT IS TO BE USED ONLY FOR THE PROJECT AND LOCATION SPECIFICALLY IDENTIFIED HEREIN. WRITTEN CONSENT BY MC MILLEN DESIGNS, LLC IS PROHIBITED. THE ARCHITECT SHALL NOT BE HELD RESPONSIBLE FOR THE ACCURACY OF THE INFORMATION PROVIDED BY OTHER PROFESSIONALS OR FOR THE SAFETY OF THE PROJECT OR FOR THE SAFETY OF THE USER. ALL CONTRACTORS AND SUBCONTRACTORS SHALL BE RESPONSIBLE FOR VERIFYING THE INFORMATION PROVIDED IN THIS DRAWING AND FOR OBTAINING ALL NECESSARY PERMITS AND APPROVALS. ALWAYS USE DIMENSIONS AS SHOWN. DRAWINGS ARE NOT TO BE REPRODUCED OR COPIED FOR ANY OTHER PROJECT OR LOCATION WITHOUT THE WRITTEN CONSENT OF MC MILLEN DESIGNS, LLC. CONDITIONS, WRITTEN DIMENSIONS SHALL GOVERN.

STATE OF ALASKA
 49 TH
 BRUNNEN
 No. 1234
 PROFESSIONAL REGISTERED ARCHITECT

M.O.A. RESIDENTIAL SCALE HOUSE
NANA CONSTRUCTION
 2053 S Miakar Circle,
 Big Lake, AK 99652
 907-892-9852

1" ACTUAL
 IF THE ABOVE DIMENSION DOES NOT MEASURE ONE INCH (1") EXACTLY, THIS DRAWING WILL HAVE BEEN ENLARGED OR REDUCED. RESPECTING ALL DIMENSIONS.

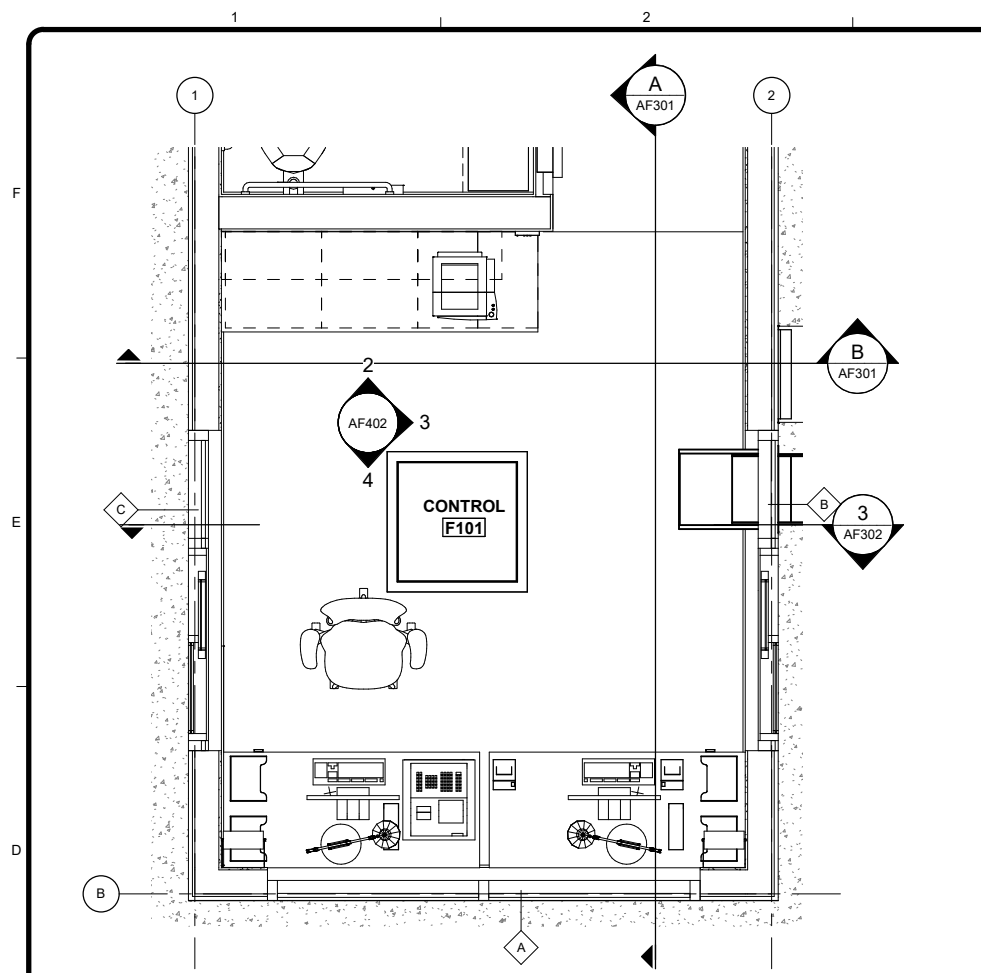
BY	REVISIONS	DATE

Date: 9/6/22
 Scale: AS NOTED
 Drawn:
 Job:
 Sheet

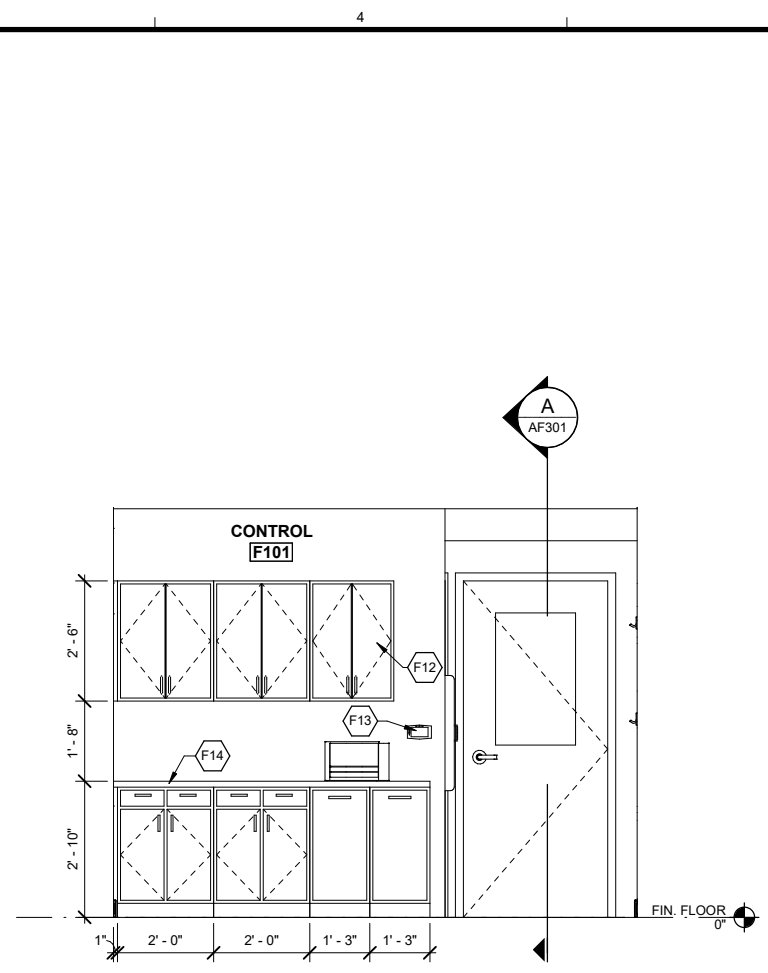
A.03
 Plotted On: 9/6/22

FLOOR PLANS

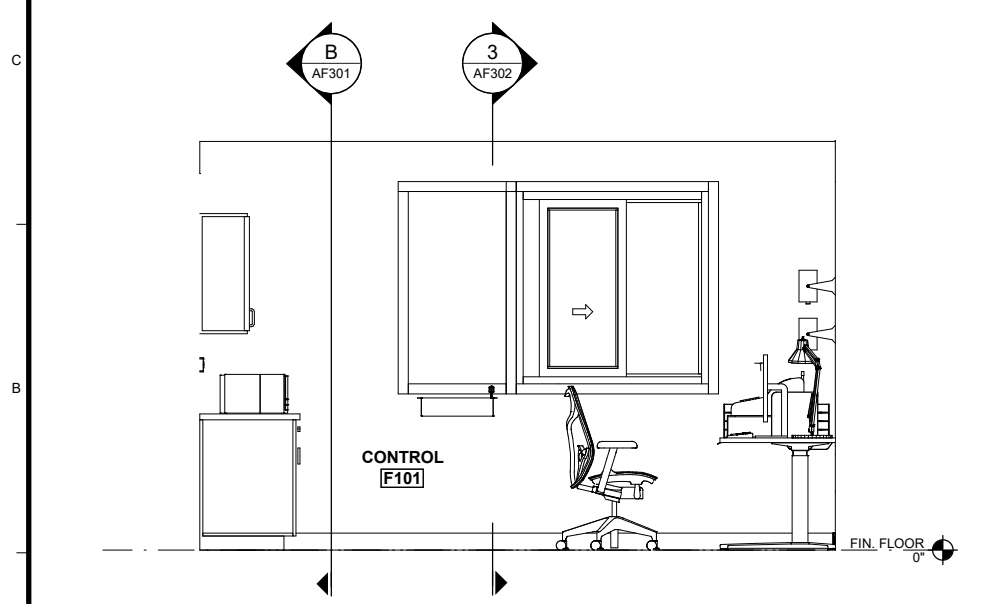
12/29/2021 3:21:40 PM BIM_360/200-93602-19002 Anchorage SVT'S/93602-RSHV2-A-2019.rvt



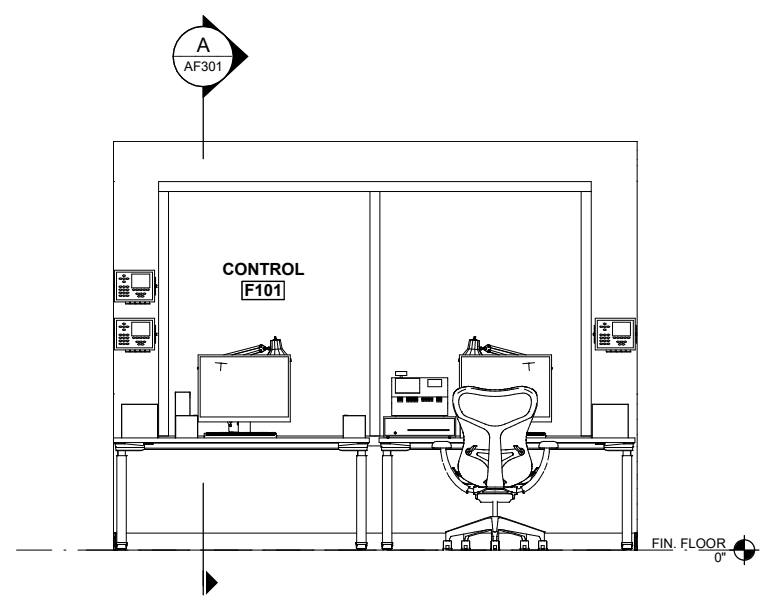
1 ENLARGED CONTROL PLAN
AF402 SCALE: 1/2" = 1'-0"



2 CONTROL ROOM - SOUTH
AF402 SCALE: 1/2" = 1'-0"



3 CONTROL ROOM - WEST
AF402 SCALE: 1/2" = 1'-0"



4 CONTROL ROOM - NORTH
AF402 SCALE: 1/2" = 1'-0"

- KEYNOTES**
- F12 CABINET W/ PLASTIC LAMINATE FINISH
 - F13 THERMOSTAT
 - F14 SOLID SURFACE COUNTERTOP

AECL1177

TETRA TECH
 1420 Fifth Avenue, Suite 800
 Seattle, Washington 98101
 Enter address here
 www.tetrattech.com

AECL848

DOWL
 WWW.DOWL.COM
 4041 B Street
 Anchorage, Alaska 99503
 907-562-2000

ASI-4

 49 TH
 Mike Marcel Bockley
 No. A 14823
 PROFESSIONAL ENGINEER
 SEPTEMBER 8, 2021

MARK	DATE	DESCRIPTION	BY
1	9/8/21	ASI-4	

MUNICIPALITY OF ANCHORAGE
 SOLID WASTE SERVICES
 RESIDENTIAL SCALE HOUSE
**ENLARGED PLAN AND
 INTERIOR ELEVATIONS**

PROJ: 200-93602-19002
 DESN: M.BODSKY
 DRWN: E.HAN
 CHKD: Q.BIAGI

AF402
 Copyright: Tetra Tech

**PREMANUFACTURED
 BOOTH/MODULAR
 CONSTRUCTION UNDER
 SEPARATE PERMIT**

