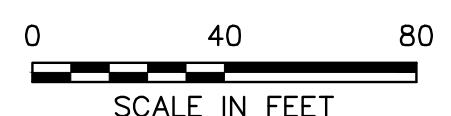


- LEGEND:**
- FACILITIES AND PROPERTY RESERVED FOR CONTRACTOR OCCUPANCY (SEE NOTE 4)
 - FACILITIES AND PROPERTY RESERVED FOR SWS OCCUPANCY (SEE NOTE 4)
 - EXISTING SITE PROPERTY BOUNDARY
 - EXISTING OFF-SITE PROPERTY LINE
 - UNDERGROUND ELECTRIC
 - OVERHEAD ELECTRIC
 - STORM DRAIN
 - SANITARY SEWER
 - TELCO SERVICE
 - MUNI GAS SERVICE
 - WATER SERVICE
 - STORMWATER CHANNEL
 - HYDRANT
 - STORM DRAIN (MOA GIS DATA)
 - SANITARY SERVICE (MOA GIS DATA)
 - WATER SERVICE (MOA GIS DATA)

- NOTES:**
1. ON-SITE UTILITY INFORMATION OBTAINED FROM .PDF FILES OF PRIOR CONSTRUCTION DOCUMENTS. LOCATIONS ARE APPROXIMATE AND TETRA TECH HAS NOT RESURVEYED TO VERIFY UTILITIES.
 2. OFF-SITE UTILITIES OBTAINED FROM GIS MAPPING AND ELECTRONIC DATA OBTAINED FROM MOA WEBSITE.
 3. ALL ELEVATIONS ARE APPROXIMATE AND ARE SHOWN TO CONVEY CONCEPTUAL DESIGN ONLY.
 4. PROPERTIES AND FACILITIES NOT WITHIN THE INDICATED BOUNDARIES FOR CONTRACTOR OR SWS OCCUPANCY ARE INTENDED FOR SHARED USE IN ACCORDANCE WITH THE CONDITIONS OF THE REQUEST FOR PROPOSALS AND SUBSEQUENT CONTRACT.



REV	DATE	DESCRIPTION	DWN BY	DES BY	CHK BY	APP BY

DATE OF ISSUE: JUNE 2022
 DRAWN BY: DESIGNED BY: _____
 CHECKED BY: APPROVED BY: _____



MUNICIPALITY OF ANCHORAGE SOLID WASTE SERVICES
 CENTRAL TRANSFER STATION
 MUNICIPALITY OF ANCHORAGE, ALASKA

**RESOURCE RECOVERY CENTER
 CONCEPTUAL SITE PLAN**

SHEET NO. **1**
 PROJECT NO. 190461

This drawing represents intellectual property of Tetra Tech. Any modification to the original by other than Tetra Tech personnel violates its original purpose and as such is rendered void. Tetra Tech will not be held liable for any changes made to this document without express written consent of the originator.

File: X:\PROJECTS\MUNICIPALITY OF ANCHORAGE\190461 - SW CTS - Project Drawings\Recycling Facility\190461 - S-PH1 - RRC - Site Plan (2022-06-28).DWG
 User: BIPEDMONT\LESCHMA Jun 28, 2022 - 3:22pm
 Layout: CTS SITE - RRC - PHASE 1A